

General Description

Series D8P directional control valves are 5-chamber, pilot operated valves. They are available in 2 or 3-position styles. These valves are manifold or sub-plate mounted, and conform to NFPA's D08, CETOP 8, NG25 mounting pattern.

Features

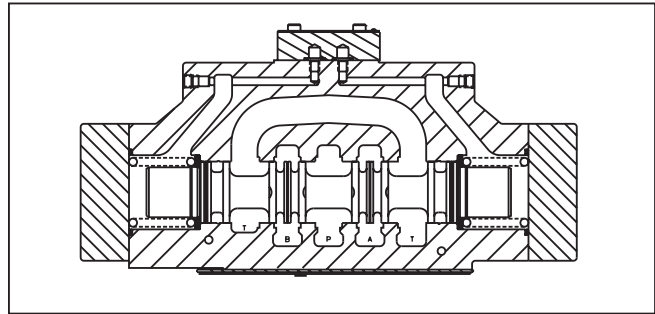
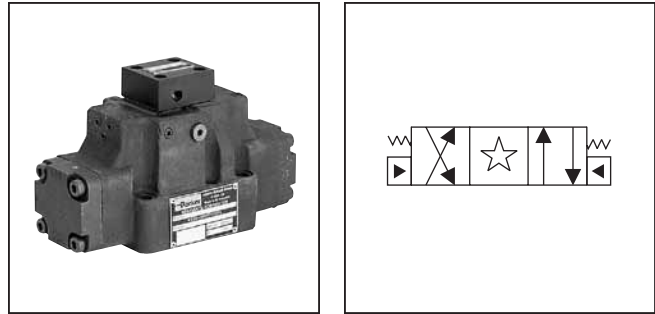
- Low pressure drop design.
- Hardened spools provide long life.

Specifications

Mounting Pattern	NFPA D08, CETOP 8, NG25
Max. Operating Pressure	345 Bar (5000 PSI)
Max. Tank Line Pressure	345 Bar (5000 PSI)
Max. Drain Pressure	345 Bar (5000 PSI)
Min. Pilot Pressure	5.1 Bar* (75 PSI)
Max. Pilot Pressure	345 Bar (5000 PSI)
Nominal Flow	302 LPM (80 GPM)
Max. Flow	See Reference Data Chart

* 6.9 Bar (100 PSI) for 2, 8, 9 & 12 spools

For flow path, pilot drain and pilot pressure details, see Installation Information.



Response Time

Response time will vary with pilot line size, pilot line length, pilot pressure shift time and flow capacity of the control valve.

Shift Volume

The pilot chamber requires a volume of 1.35 in³ (22.1 cc) for center to end.

Ordering Information

<div style="border: 1px solid black; padding: 2px; width: 30px; margin: 0 auto;">D</div> <p>Directional Control Valve</p>	<div style="border: 1px solid black; padding: 2px; width: 30px; margin: 0 auto;">8</div> <p>Basic Valve</p>	<div style="border: 1px solid black; padding: 2px; width: 30px; margin: 0 auto;">P</div> <p>Actuator</p>	<div style="border: 1px solid black; padding: 2px; width: 30px; margin: 0 auto;"></div> <p>Spool</p>	<div style="border: 1px solid black; padding: 2px; width: 30px; margin: 0 auto;"></div> <p>Style</p>	<div style="border: 1px solid black; padding: 2px; width: 30px; margin: 0 auto;"></div> <p>Pilot Supply and Drain</p>	<div style="border: 1px solid black; padding: 2px; width: 30px; margin: 0 auto;"></div> <p>Seal</p>	<div style="border: 1px solid black; padding: 2px; width: 30px; margin: 0 auto;"></div> <p>Valve Variations</p>	<div style="border: 1px solid black; padding: 2px; width: 30px; margin: 0 auto;"></div> <p>Design Series</p>																																	
<div style="border: 1px solid black; padding: 2px; width: 100px; margin: 0 auto;">NFPA D08 CETOP 8 DIN NG25</div>		<div style="border: 1px solid black; padding: 2px; width: 100px; margin: 0 auto;">Oil Operator</div>		<div style="border: 1px solid black; padding: 2px; width: 100px; margin: 0 auto;"> <table border="0"> <tr> <th>Code</th> <th>Type</th> </tr> <tr> <td>N</td> <td>Nitrile</td> </tr> <tr> <td>V</td> <td>Fluorocarbon</td> </tr> </table> </div>		Code	Type	N	Nitrile	V	Fluorocarbon	<div style="border: 1px solid black; padding: 2px; width: 100px; margin: 0 auto;"> <table border="0"> <tr> <th>Code</th> <th>Description</th> </tr> <tr> <td>7</td> <td>Pilot Choke – Meter Out</td> </tr> <tr> <td>8</td> <td>Stroke Adj. 'B' End</td> </tr> <tr> <td>9</td> <td>Stroke Adj. 'A' End</td> </tr> <tr> <td>60</td> <td>Pilot Choke – Meter In</td> </tr> <tr> <td>89</td> <td>Stroke Adj. 'A' & 'B' Ends</td> </tr> </table> </div>		Code	Description	7	Pilot Choke – Meter Out	8	Stroke Adj. 'B' End	9	Stroke Adj. 'A' End	60	Pilot Choke – Meter In	89	Stroke Adj. 'A' & 'B' Ends	<p>NOTE: Not required when ordering.</p>															
Code	Type																																								
N	Nitrile																																								
V	Fluorocarbon																																								
Code	Description																																								
7	Pilot Choke – Meter Out																																								
8	Stroke Adj. 'B' End																																								
9	Stroke Adj. 'A' End																																								
60	Pilot Choke – Meter In																																								
89	Stroke Adj. 'A' & 'B' Ends																																								
<table border="1" style="width: 100%;"> <thead> <tr> <th>Code</th> <th>Symbol</th> <th>Code</th> <th>Symbol</th> </tr> </thead> <tbody> <tr> <td>1</td> <td></td> <td>11</td> <td></td> </tr> <tr> <td>2</td> <td></td> <td>12</td> <td></td> </tr> <tr> <td>4</td> <td></td> <td>20*</td> <td></td> </tr> <tr> <td>7</td> <td></td> <td>30**</td> <td></td> </tr> <tr> <td>9**</td> <td></td> <td></td> <td></td> </tr> </tbody> </table>				Code	Symbol	Code	Symbol	1		11		2		12		4		20*		7		30**		9**				<div style="border: 1px solid black; padding: 2px; width: 100px; margin: 0 auto;"> <table border="0"> <tr> <th>Code</th> <th>Description</th> <th>Symbol</th> </tr> <tr> <td>B†</td> <td>Sgl. operator, 2 position, spring offset. P to A and B to T in offset position.</td> <td></td> </tr> <tr> <td>C</td> <td>Dbl. operator, 3 position, spring centered.</td> <td></td> </tr> <tr> <td>H†</td> <td>Sgl. operator, 2 position, spring offset. P to B and A to T in offset position.</td> <td></td> </tr> </table> </div> <p>This condition varies with spool code.</p>		Code	Description	Symbol	B†	Sgl. operator, 2 position, spring offset. P to A and B to T in offset position.		C	Dbl. operator, 3 position, spring centered.		H†	Sgl. operator, 2 position, spring offset. P to B and A to T in offset position.	
Code	Symbol	Code	Symbol																																						
1		11																																							
2		12																																							
4		20*																																							
7		30**																																							
9**																																									
Code	Description	Symbol																																							
B†	Sgl. operator, 2 position, spring offset. P to A and B to T in offset position.																																								
C	Dbl. operator, 3 position, spring centered.																																								
H†	Sgl. operator, 2 position, spring offset. P to B and A to T in offset position.																																								
<p>* 20 spool has closed crossover. ** 9 & 30 spools have open crossover.</p>				<p>† Available with 20 & 30 spools only.</p>																																					

Valve schematic symbols are per NFPA/ANSI standards, providing flow P to A when energizing operator X. Note operators reverse sides for #9 spool. See installation information for details.

Bold: Designates Tier I products and options.

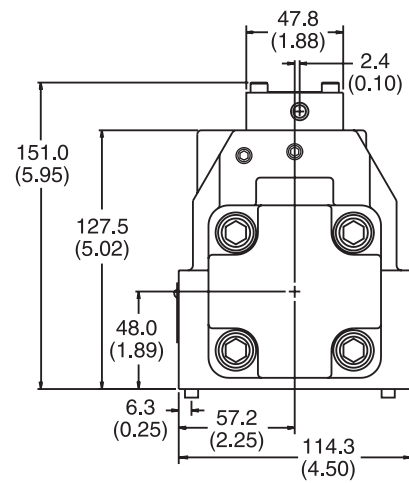
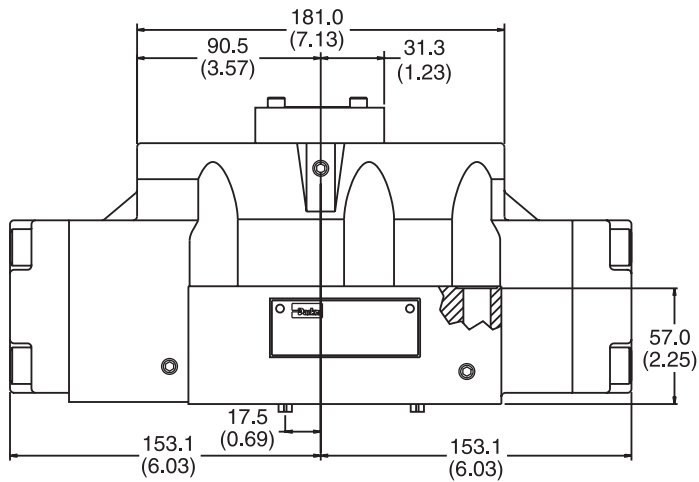
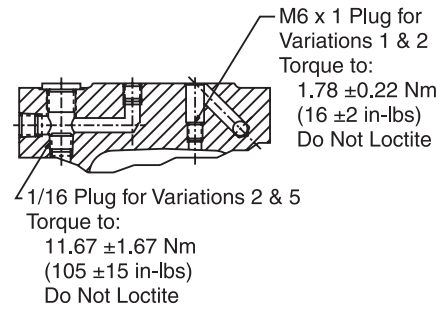
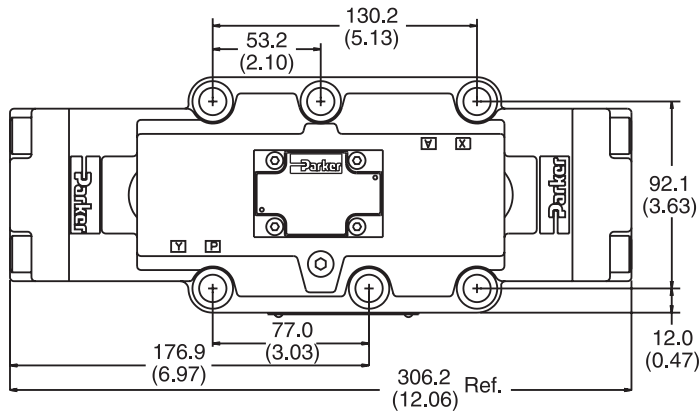
Non-Bold: Designates Tier II products and options. These products will have longer lead times.

D81.indd, dd

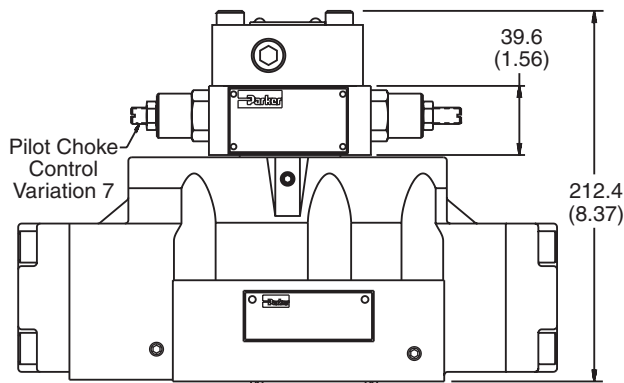
Inch equivalents for millimeter dimensions are shown in (**)

A

Standard Pilot Operated



Pilot Operated with Pilot Choke Control



Note: 57mm (2.24") from bottom of bolt hole counterbore to bottom of valve.