



Drive Controlled Pump

Energy-Efficient Hydraulic System Solutions



ENGINEERING YOUR SUCCESS.



WARNING – USER RESPONSIBILITY

FAILURE OR IMPROPER SELECTION OR IMPROPER USE OF THE PRODUCTS DESCRIBED HEREIN OR RELATED ITEMS CAN CAUSE DEATH, PERSONAL INJURY AND PROPERTY DAMAGE.

This document and other information from Parker-Hannifin Corporation, its subsidiaries and authorized distributors provide product or system options for further investigation by users having technical expertise.

The user, through its own analysis and testing, is solely responsible for making the final selection of the system and components and assuring that all performance, endurance, maintenance, safety and warning requirements of the application are met. The user must analyze all aspects of the application, follow applicable industry standards, and follow the information concerning the product in the current product catalog and in any other materials provided from Parker or its subsidiaries or authorized distributors.

To the extent that Parker or its subsidiaries or authorized distributors provide component or system options based upon data or specifications provided by the user, the user is responsible for determining that such data and specifications are suitable and sufficient for all applications and reasonably foreseeable uses of the components or systems.

Offer of Sale

Please contact your Parker representation for a detailed "Offer of Sale".

| Description | Page |
|--------------------------------------|------|
| Drive Controlled Pump Systems | |
| Introduction | 4 |
| System components | 5 |
| Ordering code | 6 |
| Dimensions | 8 |
| Pumps | |
| Vane pumps | 20 |
| Axial piston pumps | 21 |
| Motors | |
| Standard asynchronous motors | 22 |
| Synchronous servo motors | 23 |
| Compact synchronous servo motors | 24 |
| AC Drive Controllers | |
| AC30V | 25 |

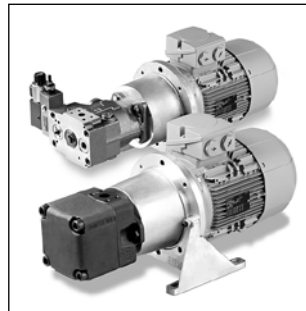
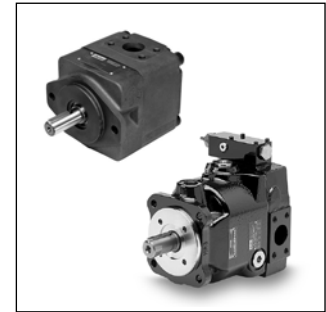
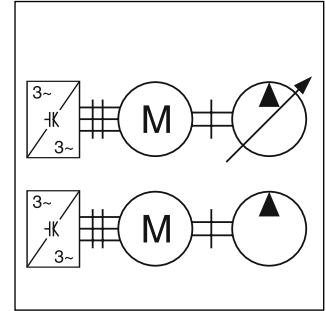
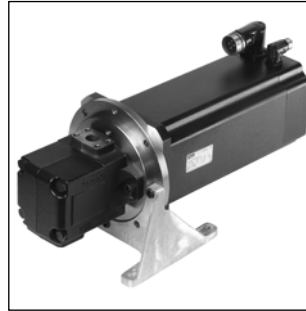
The Drive Controlled Pump system solutions from Parker are variable-speed hydraulic pump systems. They essentially consist of an AC drive unit (frequency controller and electronics), an asynchronous, synchronous servo or compact synchronous servo motor as well as a hydraulic pump. They enable the central, regulated hydraulic supply of all drives. Thus they provide the exact power that is required in the cycle at all times.

The controller continuously records target values for the volume flow and/or pressure of the machine control system and compares them to actual pressure value. The drive speed of the electric motor is regulated so that the pump provides the exact amount of oil required to achieve the target value.

With the Drive Controlled Pump, Parker optionally employs vane pumps or axial piston pumps or combinations of both.

The vane pump represents the ideal basis for systems with fixed displacement pumps. Her minimum speed increases from zero proportional to pressure up to 300 rpm at maximum pressure. Thanks to the very wide range of speed up to 3000 rpm and the high operating pressures of up to 320 bar, this system solution can be tuned exactly to a customer's specific requirements. The robust double lip design makes the pump impervious to particle contamination and maintains a high degree of efficiency in the long term.

The axial piston pump is utilized if high peak pressures are introduced or if high pressures must be maintained for long periods. The housings increased rigidity ensures low vibration and therefore reduces the noise level. The reduced pressure and volume flow pulsation also reduces the load on the piping system.



Features

- Suitable for 400 V supply
- Change-over pressure/volume flow control
- Optimum dimensioning of all components using the Parker DriveCreator software
- Standard interfaces for simple conversion of conventional pump systems
- Dual pump systems for larger volume flow possible – also as combination of variable and fixed displacement pump systems
- High precision and dynamic operation for flow and pressure control
- High energy efficiency through optimum adjustment to cycle requirements
- Low noise emissions through optimized pump design and speed adjustment

Recommended fluids

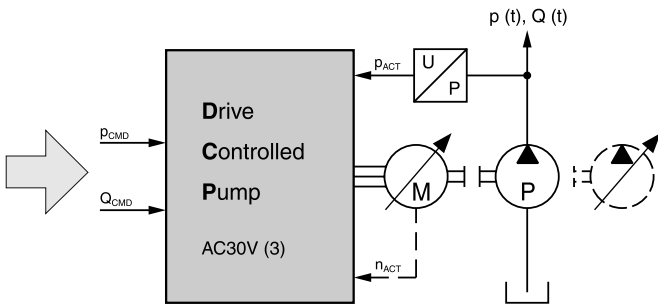
We recommend high-quality mineral hydraulic fluids: HLP oils as per DIN 51524. For general applications, the Bruggen value should be at least 30 N/mm²; 50 N/mm² for heavy-duty systems (measured as per DIN 51347-2).

Under normal conditions, the viscosity should be between 16 and 100 mm²/s (cSt). Maximum start-up viscosity is 800 mm²/s (cSt).

The fluid must have a purity in conformance with ISO 4406:1999. The filter elements must also conform to ISO standards. For systems with maximum service life: purity level 18/16/13 in accordance with ISO 4406:1999; otherwise, purity level 20/18/15 (19/17/14 for vane pumps) in accordance with ISO 4406:1999.

Components of the drive-controlled pump system

1. Motor
 - Asynchronous standard motor or
 - Synchronous servo motor, catalogue 192-061012 and 192-061013
 - Compact synchronous servo motor, catalogue 192-300108
2. Pump
 - Vane pump T7, catalogue HY29-0001, or
 - Axial piston pump PVplus, catalogue HY30-3245, or
 - Combination of vane pump and axial piston pump
 - Mounting accessories for motor pump assembly ¹⁾:
 - Coupling
 - Pump bellhousing
 - Pump flange
3. AC Drive Controller
 - AC30V, catalogue 192-300022
4. Accessories that may be required ²⁾
 - Shield connection
 - Power cables
 - Sensor cables
 - Braking resistor
 - Mains filters
 - Pressure transducer



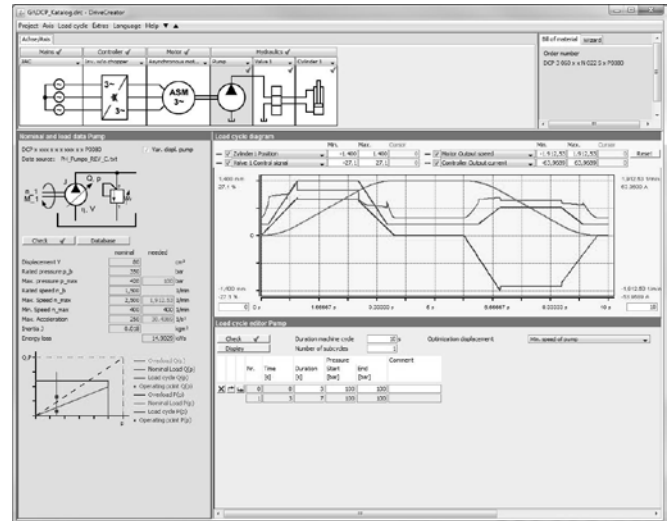
Further combinations in addition to those contained in this catalogue are available upon request. Detailed information on all Parker components can be found in the individual product catalogues (see above).

Parker DriveCreator

For optimum yet simple selection and dimensioning of the components Parker offers a unique software tool: the Parker DriveCreator.

Firstly, the cycle data (cylinder speed and load or pressure and volume flow) is entered. Subsequently, the optimum pump or combination of pumps is selected using this data, and then motor and drive suitable for the power consumption.

The Parker DriveCreator calculates the best combination of components possible with the highest degree of energy efficiency.

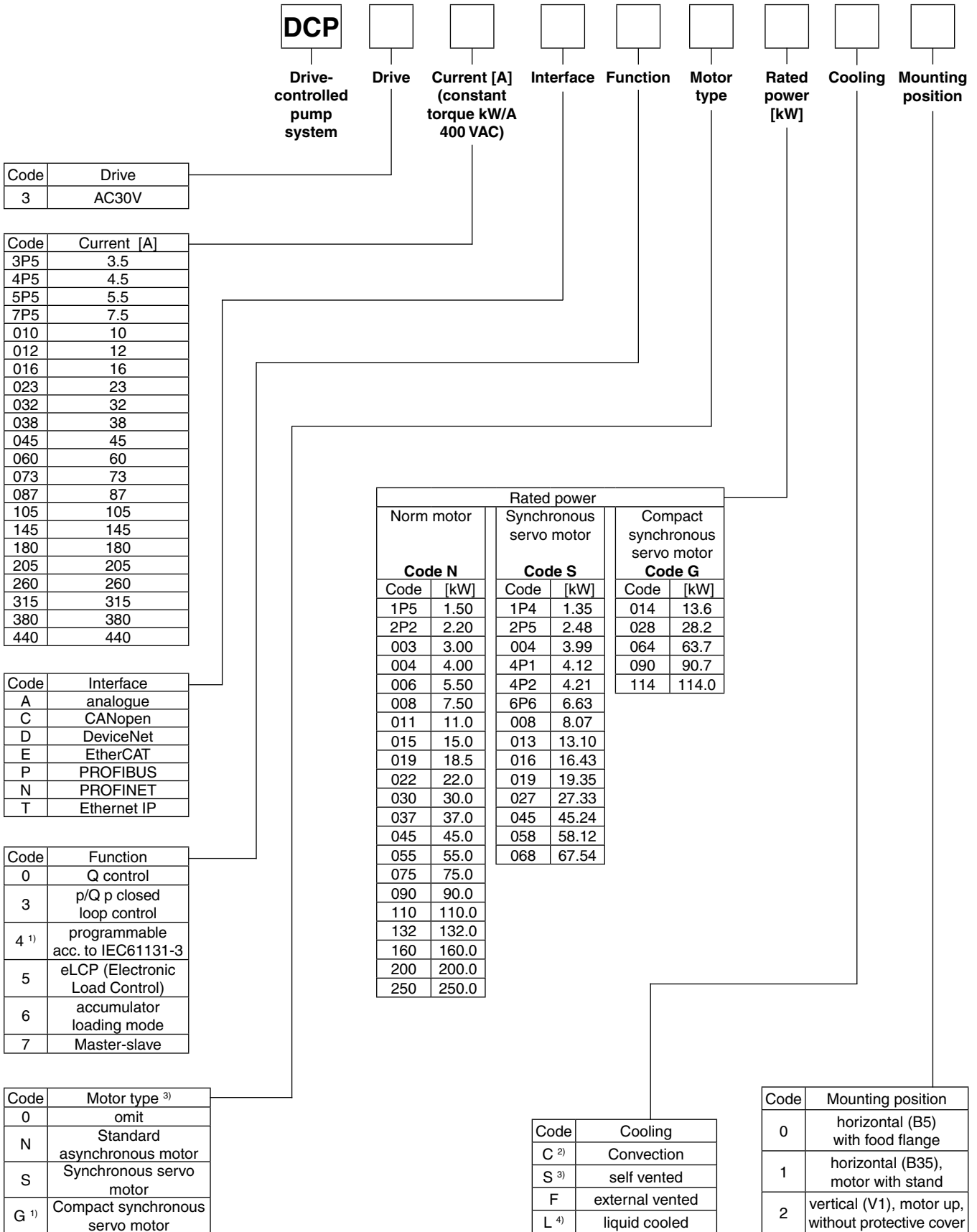


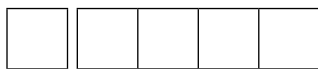
Access to this tool can be obtained via www.parker.com/drivecontrolledpump

¹⁾ Dependent on the selected motor-pump combination.
²⁾ Not included in delivery.

Ordering Code

Drive Controlled Pump





Pump type⁵⁾

| Vane pumps | | Axial piston pumps | | Double pump vane pumps | | | | Double pump vane pumps | | | |
|------------|----------------------|--------------------|----------------------|------------------------|----------------------|--------|----------------------|------------------------|----------------------|--------|----------------------|
| T7A | | PVplus | | T7BB | | | | T7EB | | | |
| Code | [cm ³ /U] | Code | [cm ³ /U] | Pump 1 | | Pump 2 | | Pump 1 | | Pump 2 | |
| | | | | Code | [cm ³ /U] | Code | [cm ³ /U] | Code | [cm ³ /U] | Code | [cm ³ /U] |
| A 0006 | 5,8 | P 0016 | 16 | J 03 | 9.8 | 03 | 9.8 | M 42 | 132.3 | 03 | 9.8 |
| A 0010 | 9,8 | P 0020 | 20 | J 04 | 12.8 | 04 | 12.8 | M 45 | 142.4 | 04 | 12.8 |
| A 0011 | 11,0 | P 0023 | 23 | J 05 | 15.9 | 05 | 15.9 | M 50 | 158.5 | 05 | 15.9 |
| A 0013 | 12,8 | P 0028 | 28 | J 06 | 19.8 | 06 | 19.8 | M 52 | 164.8 | 06 | 19.8 |
| A 0017 | 17,2 | P 0032 | 32 | J 07 | 22.5 | 07 | 22.5 | M 54 | 171.0 | 07 | 22.5 |
| A 0020 | 19,8 | P 0040 | 40 | J 08 | 24.9 | 08 | 24.9 | M 57 | 183.3 | 08 | 24.9 |
| A 0022 | 22,5 | P 0046 | 46 | J 09 | 28.0 | 09 | 28.0 | M 62 | 196.7 | 09 | 28.0 |
| A 0025 | 24,9 | P 0063 | 63 | J 10 | 31.8 | 10 | 31.8 | M 66 | 213.3 | 10 | 31.8 |
| T7B | | P 0080 | 80 | J 11 | 35.0 | 11 | 35.0 | M 72 | 227.1 | 11 | 35.0 |
| B 0009 | 28,0 | P 0092 | 92 | J 12 | 41.0 | 12 | 41.0 | | | 12 | 41.0 |
| B 0010 | 31,8 | P 0140 | 140 | J 14 | 45.0 | 14 | 45.0 | | | 14 | 45.0 |
| B 0011 | 35,0 | P 0180 | 180 | J 15 | 50.0 | 15 | 50.0 | | | 15 | 50.0 |
| B 0012 | 41,0 | P 0270 | 270 | | | | | | | | |
| B 0014 | 45,0 | P 0360 | 360 | | | | | | | | |
| B 0015 | 50,0 | PVplus | | | | | | | | | |
| T7D | | Dual-displacement | | | | | | | | | |
| D 0017 | 55,0 | O 0046 | 46 | | | | | | | | |
| D 0020 | 66,0 | O 0092 | 92 | | | | | | | | |
| D 0022 | 70,3 | O 0180 | 180 | | | | | | | | |
| D 0024 | 81,1 | | | | | | | | | | |
| D 0028 | 90,0 | | | | | | | | | | |
| D 0031 | 99,2 | | | | | | | | | | |
| D 0035 | 113,4 | | | | | | | | | | |
| D 0038 | 120,6 | | | | | | | | | | |
| D 0042 | 137,5 | | | | | | | | | | |
| T7E | | | | | | | | | | | |
| E 0042 | 132,3 | | | | | | | | | | |
| E 0045 | 142,4 | | | | | | | | | | |
| E 0050 | 158,5 | | | | | | | | | | |
| E 0052 | 164,8 | | | | | | | | | | |
| E 0054 | 171,0 | | | | | | | | | | |
| E 0057 | 183,3 | | | | | | | | | | |
| E 0062 | 196,7 | | | | | | | | | | |
| E 0066 | 213,3 | | | | | | | | | | |
| E 0072 | 227,1 | | | | | | | | | | |

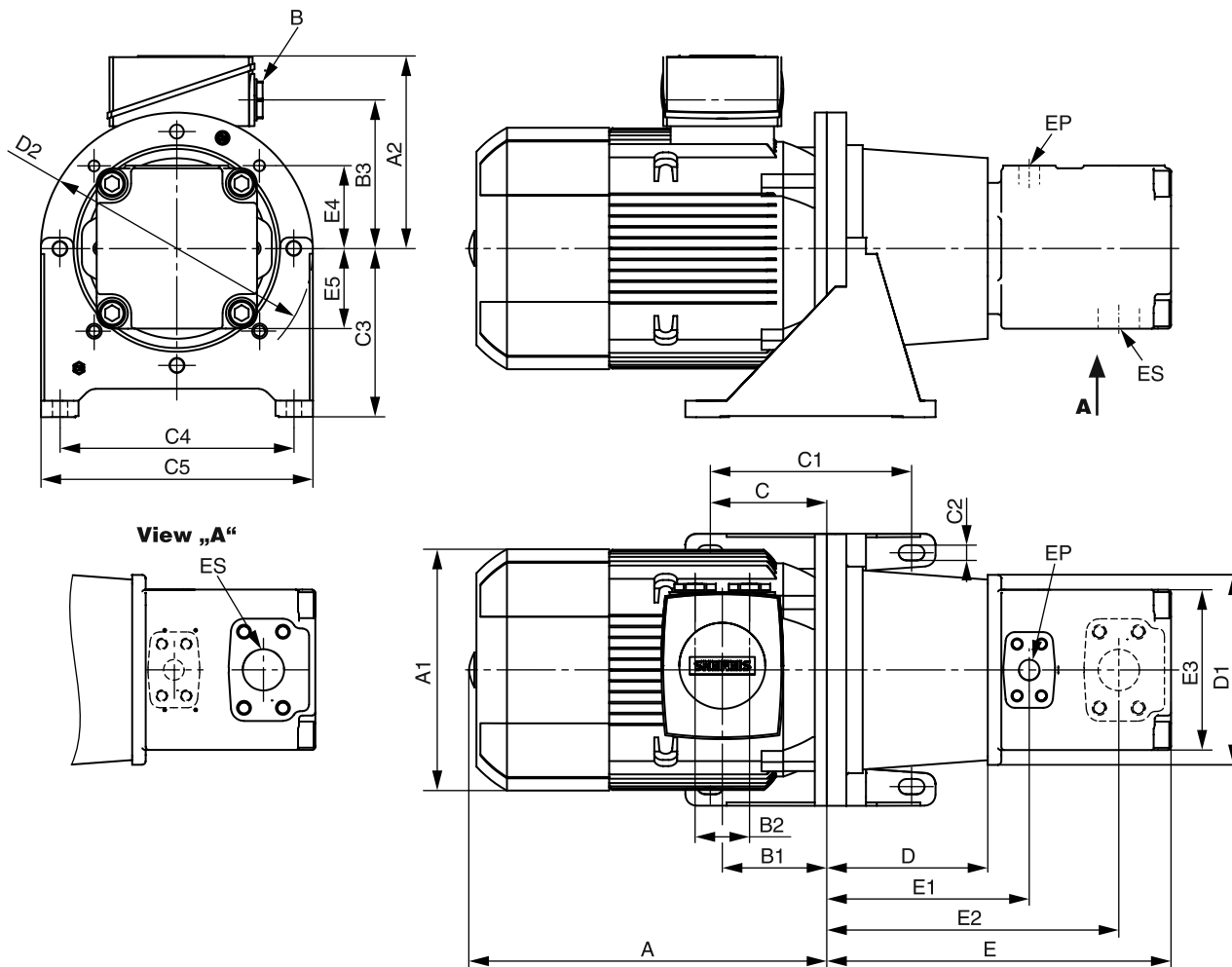
| Double pump vane pumps | | | | Double pump vane pumps | | | |
|------------------------|----------------------|--------|----------------------|------------------------|----------------------|--------|----------------------|
| T7DB | | | | T7ED | | | |
| Pump 1 | | Pump 2 | | Pump 1 | | Pump 2 | |
| Code | [cm ³ /U] | Code | [cm ³ /U] | Code | [cm ³ /U] | Code | [cm ³ /U] |
| K 17 | 55.0 | 03 | 9.8 | N 42 | 132.3 | 17 | 55.0 |
| K 20 | 66.0 | 04 | 12.8 | N 45 | 142.4 | 20 | 66.0 |
| K 22 | 70.3 | 05 | 15.9 | N 50 | 158.5 | 22 | 70.3 |
| K 24 | 81.1 | 06 | 19.8 | N 52 | 164.8 | 24 | 81.1 |
| K 28 | 90.0 | 07 | 22.5 | N 54 | 171.0 | 28 | 90.0 |
| K 31 | 99.2 | 08 | 24.9 | N 57 | 183.3 | 31 | 99.2 |
| K 35 | 113.4 | 09 | 28.0 | N 62 | 196.7 | 35 | 113.4 |
| K 38 | 120.6 | 10 | 31.8 | N 66 | 213.3 | 38 | 120.6 |
| K 42 | 137.6 | 11 | 35.0 | N 72 | 227.1 | 42 | 137.6 |
| | | 12 | 41.0 | | | | |
| | | 14 | 45.0 | | | | |
| | | 15 | 50.0 | | | | |

| Double pump vane pumps | | | | Double pump vane pumps | | | |
|------------------------|----------------------|--------|----------------------|------------------------|----------------------|--------|----------------------|
| T7DD | | | | T7EE | | | |
| Pump 1 | | Pump 2 | | Pump 1 | | Pump 2 | |
| Code | [cm ³ /U] | Code | [cm ³ /U] | Code | [cm ³ /U] | Code | [cm ³ /U] |
| L 17 | 55.0 | 17 | 55.0 | Q 42 | 132.3 | 42 | 132.3 |
| L 20 | 66.0 | 20 | 66.0 | Q 45 | 142.4 | 45 | 142.4 |
| L 22 | 70.3 | 22 | 70.3 | Q 50 | 158.5 | 50 | 158.5 |
| L 24 | 81.1 | 24 | 81.1 | Q 52 | 164.8 | 52 | 164.8 |
| L 28 | 90.0 | 28 | 90.0 | Q 54 | 171.0 | 54 | 171.0 |
| L 31 | 99.2 | 31 | 99.2 | Q 57 | 183.3 | 57 | 183.3 |
| L 35 | 113.4 | 35 | 113.4 | Q 62 | 196.7 | 62 | 196.7 |
| L 38 | 120.6 | 38 | 120.6 | Q 66 | 213.3 | 66 | 213.3 |
| L 42 | 137.6 | 42 | 137.6 | Q 72 | 227.1 | 72 | 227.1 |

1) Option G only with cooling code L.
 2) Not for standard asynchronous motors.
 3) Synchronous servo motors on request.
 4) Cooling code L only with motor code G.
 5) Code build from letter and 4 digit number.

Warning!
 The torque of the second pump must not exceed the torque of the first pump!

Vane pump with standard asynchronous motor



Dimensions

Drive Controlled Pump

| Motor code | Pump code | Motor size | A [mm] | A1 [mm] | A2 [mm] | B [mm] | B1 [mm] | B2 [mm] | B3 [mm] | C [mm] | C1 [mm] | C2 [mm] | C3 [mm] | C4 [mm] | C5 [mm] |
|------------|------------|------------|--------|---------|---------|---------------|---------|---------|---------|--------|---------|---------|---------|---------|---------|
| 1P5 | A0006 | 90L | 297 | 178 | 126 | 1 x M25 x 1.5 | 78.5 | 0 | 101.5 | -20 | 60 | 11 | 112 | 180 | 210 |
| 2P2 - 003 | A0006 - 11 | 100L | 328.5 | 198 | 193 | 2 x M32 x 1.5 | 100.5 | 48 | 147 | 107.5 | 185 | 14 | 155 | 215 | 250 |
| 004 | A0006 - 11 | 112M | 322 | 222 | 195 | 2 x M32 x 1.5 | 100.5 | 48 | 150 | 107.5 | 185 | 14 | 155 | 215 | 250 |
| 006 - 008 | A0010 - 25 | 132S/132M | 376.5 | 262 | 214.5 | 2 x M32 x 1.5 | 115.5 | 48 | 169 | 130.5 | 225 | 14 | 185 | 265 | 300 |
| 008 | B0009 | 132M | 376.5 | 262 | 214.5 | 2 x M32 x 1.5 | 115.5 | 48 | 169 | 130.5 | 225 | 14 | 185 | 265 | 300 |
| 011 - 015 | A0013 - 25 | 160M/160L | 484 | 314 | 261 | 2 x M40 x 1.5 | 145 | 60 | 213 | 149 | 265 | 18 | 235 | 300 | 350 |
| 011 - 015 | B0009 - 15 | 160M/160L | 484 | 314 | 261 | 2 x M40 x 1.5 | 145 | 60 | 213 | 149 | 265 | 18 | 235 | 300 | 350 |
| 015 | D0017 | 160L | 484 | 314 | 261 | 2 x M40 x 1.5 | 145 | 60 | 213 | 149 | 265 | 18 | 235 | 300 | 350 |
| 019 - 022 | B0009 - 15 | 180M/180L | 558 | 356 | 286 | 2 x M40 x 1.5 | 155 | 60 | 234 | 149 | 265 | 18 | 235 | 300 | 350 |
| 019 - 022 | D0017 - 28 | 180M/180L | 558 | 356 | 286 | 2 x M40 x 1.5 | 155 | 60 | 234 | 149 | 265 | 18 | 235 | 300 | 350 |
| 030 | B0010 - 15 | 200L | 611 | 396 | 315 | 2 x M50 x 1.5 | 164 | 85 | 259 | 174 | 300 | 18 | 260 | 350 | 400 |
| 030 | D0020 - 38 | 200L | 611 | 396 | 315 | 2 x M50 x 1.5 | 164 | 85 | 259 | 174 | 300 | 18 | 260 | 350 | 400 |
| 037 | D0017 - 42 | 225S | 648 | 449 | 338 | 2 x M50 x 1.5 | 164 | 85 | 282 | 199 | 335 | 18 | 295 | 400 | 450 |
| 045 | D0020 - 42 | 225M | 708 | 449 | 338 | 2 x M50 x 1.5 | 164 | 85 | 282 | 199 | 335 | 18 | 295 | 400 | 450 |
| 055 | D0024 - 42 | 250M | 747 | 497 | 410 | 2 x M63 x 1.5 | 192 | 110 | 322 | 249 | 415 | 18 | 350 | 500 | 550 |
| 075 | D0028 - 42 | 280S | 820 | 551 | 433 | 2 x M63 x 1.5 | 210 | 110 | 345 | 249 | 415 | 18 | 350 | 500 | 550 |
| 090 | D0042 | 280M | 820 | 551 | 433 | 2 x M63 x 1.5 | 210 | 110 | 345 | 249 | 415 | 18 | 350 | 500 | 550 |

| Motor code | D [mm] | D1 [mm] | D2 [mm] | E [mm] | E1 [mm] | E2 [mm] | E3 [mm] | E4 [mm] | E5 [mm] | EP | ES |
|------------|--------|---------|---------|--------|---------|---------|---------|---------|---------|-----------------------------|-----------------------------|
| 1P5 | 110 | 145 | 200 | 248.5 | 226.3 | 148.2 | 110 | 68 | 63.5 | 3/4" BSPP | 1 1/4" BSPP |
| 2P2 - 003 | 124 | 124 | 250 | 262.5 | 240.3 | 162.2 | 110 | 68 | 63.5 | 3/4" BSPP | 1 1/4" BSPP |
| 004 | 124 | 124 | 250 | 262.5 | 240.3 | 162.2 | 110 | 68 | 63.5 | 3/4" BSPP | 1 1/4" BSPP |
| 006 - 008 | 144 | 205 | 300 | 282.5 | 260.3 | 182.2 | 110 | 68 | 63.5 | 3/4" BSPP | 1 1/4" BSPP |
| 008 | 168 | 220 | 300 | 336.5 | 206.1 | 250.3 | 140 | 76.2 | 76.2 | 1" ; 4x M10 x 19 deep | 1 1/2" ; 4x M12 x 22.4 deep |
| 011 - 015 | 188 | 225 | 350 | 326.5 | 304.3 | 226.2 | 110 | 68 | 63.5 | 3/4" BSPP | 1 1/4" BSPP |
| 011 - 015 | 204 | 225 | 350 | 372.5 | 242.1 | 286.3 | 140 | 76.2 | 76.2 | 1" ; 4x M10 x 19 deep | 1 1/2" ; 4x M12 x 22.4 deep |
| 015 | 228 | 248 | 350 | 412.9 | 266.1 | 315.4 | 147.4 | 82.6 | 82.6 | 1 1/4" ; 4x M12 x 22.3 deep | 2 1/2" ; 4x M12 x 23.9 deep |
| 019 - 022 | 204 | 225 | 350 | 372.5 | 242.1 | 286.3 | 140 | 76.2 | 76.2 | 1" ; 4x M10 x 19 deep | 1 1/2" ; 4x M12 x 22.4 deep |
| 019 - 022 | 228 | 248 | 350 | 412.9 | 266.1 | 315.4 | 147.4 | 82.6 | 82.6 | 1 1/4" ; 4x M12 x 22.3 deep | 2 1/2" ; 4x M12 x 23.9 deep |
| 030 | 204 | 230 | 400 | 372.5 | 242.1 | 286.3 | 140 | 76.2 | 76.2 | 1" ; 4x M10 x 19 deep | 1 1/2" ; 4x M12 x 22.4 deep |
| 030 | 228 | 279 | 400 | 412.9 | 266.1 | 315.4 | 147.4 | 82.6 | 82.6 | 1 1/4" ; 4x M12 x 22.3 deep | 2 1/2" ; 4x M12 x 23.9 deep |
| 037 | 262 | 315 | 450 | 446.9 | 300.1 | 349.4 | 147.4 | 82.6 | 82.6 | 1 1/4" ; 4x M12 x 22.3 deep | 2 1/2" ; 4x M12 x 23.9 deep |
| 045 | 262 | 315 | 450 | 446.9 | 300.1 | 349.4 | 147.4 | 82.6 | 82.6 | 1 1/4" ; 4x M12 x 22.3 deep | 2 1/2" ; 4x M12 x 23.9 deep |
| 055 | 265 | 360 | 550 | 449.9 | 303.1 | 352.4 | 147.4 | 82.6 | 82.6 | 1 1/4" ; 4x M12 x 22.3 deep | 2 1/2" ; 4x M12 x 23.9 deep |
| 075 | 265 | 360 | 550 | 449.9 | 303.1 | 352.4 | 147.4 | 82.6 | 82.6 | 1 1/4" ; 4x M12 x 22.3 deep | 2 1/2" ; 4x M12 x 23.9 deep |
| 090 | 265 | 360 | 550 | 449.9 | 303.1 | 352.4 | 147.4 | 82.6 | 82.6 | 1 1/4" ; 4x M12 x 22.3 deep | 2 1/2" ; 4x M12 x 23.9 deep |

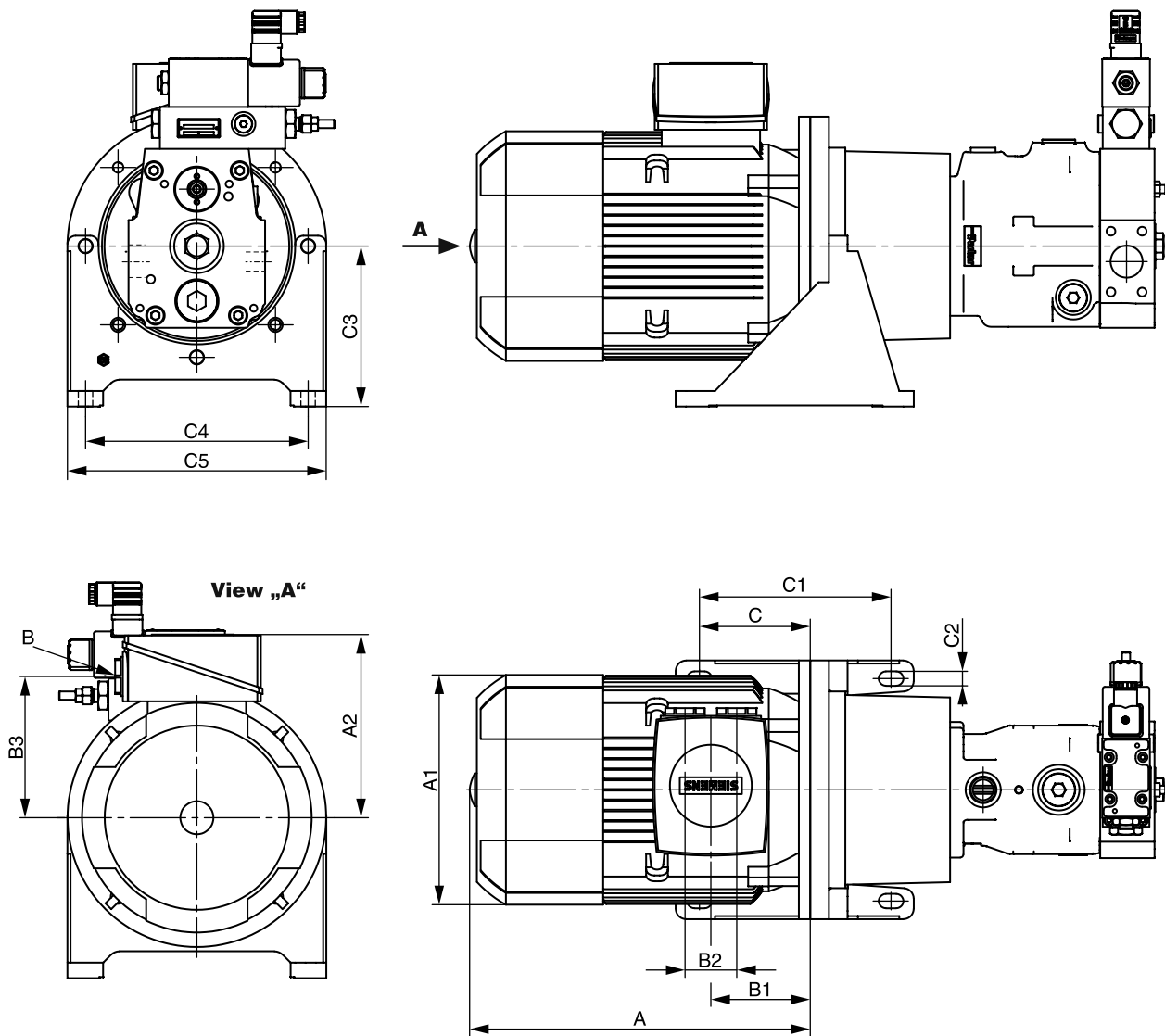
Pump type T7E (see ordering code) on request

¹⁾ Pressure port, BSPP or SAE 4-hole flange - J518 - ISO 6162-1

²⁾ Suction port, BSPP or SAE 4-hole flange - J518 - ISO 6162-1



Axial piston pump with standard asynchronous motor



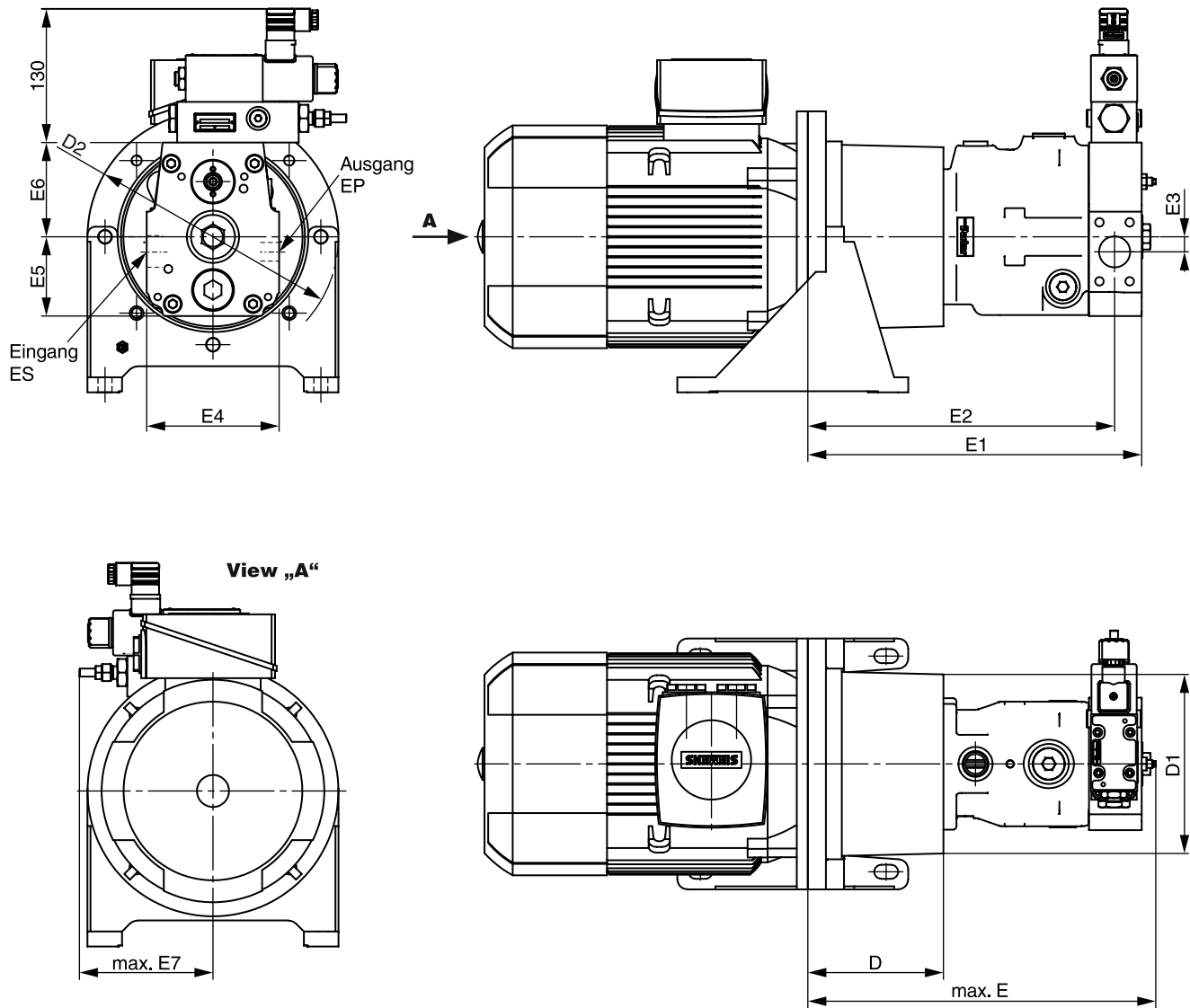
Dimensions

Drive Controlled Pump

| Motor code | Pump code | Motor size | A [mm] | A1 [mm] | A2 [mm] | B [mm] | B1 [mm] | B2 [mm] | B3 [mm] | C [mm] | C1 [mm] | C2 [mm] | C3 [mm] | C4 [mm] | C5 [mm] |
|------------|-------------|-------------|--------|---------|---------|---------------|---------|---------|---------|--------|---------|---------|---------|---------|---------|
| 004 | P0016 | 112M | 322 | 222 | 195 | 2 x M32 x 1.5 | 100.5 | 48 | 150 | 107.5 | 185 | 14 | 155 | 215 | 250 |
| 006 / 008 | P0016 - 28 | 132S / 132M | 376.5 | 262 | 214.5 | 2 x M32 x 1.5 | 115.5 | 48 | 169 | 130.5 | 225 | 14 | 185 | 265 | 300 |
| 011 / 015 | P0016 - 28 | 160M / 160L | 484 | 314 | 261 | 2 x M40 x 1.5 | 145 | 60 | 213 | 149 | 265 | 18 | 235 | 300 | 350 |
| 011 / 015 | P0032 - 46 | 160M / 160L | 484 | 314 | 261 | 2 x M40 x 1.5 | 145 | 60 | 213 | 149 | 265 | 18 | 235 | 300 | 350 |
| 019 / 022 | P0020 - 28 | 180M / 180L | 558 | 356 | 286 | 2 x M40 x 1.5 | 155 | 60 | 234 | 149 | 265 | 18 | 235 | 300 | 350 |
| 019 / 022 | P0032 - 46 | 180M / 180L | 558 | 356 | 286 | 2 x M40 x 1.5 | 155 | 60 | 234 | 149 | 265 | 18 | 235 | 300 | 350 |
| 019 / 022 | P0063 / 80 | 180M / 180L | 558 | 356 | 286 | 2 x M40 x 1.5 | 155 | 60 | 234 | 149 | 265 | 18 | 235 | 300 | 350 |
| 030 | P0028 | 200L | 611 | 396 | 315 | 2 x M50 x 1.5 | 164 | 85 | 259 | 174 | 300 | 18 | 260 | 350 | 400 |
| 030 | P0032 - 46 | 200L | 611 | 396 | 315 | 2 x M50 x 1.5 | 164 | 85 | 259 | 174 | 300 | 18 | 260 | 350 | 400 |
| 030 | P0063 - 92 | 200L | 611 | 396 | 315 | 2 x M50 x 1.5 | 164 | 85 | 259 | 174 | 300 | 18 | 260 | 350 | 400 |
| 037 | P0040 - 46 | 225S | 648 | 449 | 338 | 2 x M50 x 1.5 | 164 | 85 | 282 | 199 | 335 | 18 | 295 | 400 | 450 |
| 037 | P0063 - 92 | 225S | 648 | 449 | 338 | 2 x M50 x 1.5 | 164 | 85 | 282 | 199 | 335 | 18 | 295 | 400 | 450 |
| 037 | P0140 | 225S | 648 | 449 | 338 | 2 x M50 x 1.5 | 164 | 85 | 282 | 199 | 335 | 18 | 295 | 400 | 450 |
| 045 | P0046 | 225M | 708 | 449 | 338 | 2 x M50 x 1.5 | 164 | 85 | 282 | 199 | 335 | 18 | 295 | 400 | 450 |
| 045 | P0063 - 92 | 225M | 708 | 449 | 338 | 2 x M50 x 1.5 | 164 | 85 | 282 | 199 | 335 | 18 | 295 | 400 | 450 |
| 045 | P0140 - 180 | 225M | 708 | 449 | 338 | 2 x M50 x 1.5 | 164 | 85 | 282 | 199 | 335 | 18 | 295 | 400 | 450 |
| 055 | P0063 - 092 | 250M | 747 | 497 | 410 | 2 x M63 x 1.5 | 192 | 110 | 322 | 249 | 415 | 18 | 350 | 500 | 550 |
| 055 | P0140 - 180 | 250M | 747 | 497 | 410 | 2 x M63 x 1.5 | 192 | 110 | 322 | 249 | 415 | 18 | 350 | 500 | 550 |
| 075 | P0080 - 092 | 280S | 820 | 551 | 433 | 2 x M63 x 1.5 | 210 | 110 | 345 | 249 | 415 | 18 | 350 | 500 | 550 |
| 075 | P0140 - 180 | 280S | 820 | 551 | 433 | 2 x M63 x 1.5 | 210 | 110 | 345 | 249 | 415 | 18 | 350 | 500 | 550 |
| 075 | P0270 | 280S | 820 | 551 | 433 | 2 x M63 x 1.5 | 210 | 110 | 345 | 249 | 415 | 18 | 350 | 500 | 550 |
| 090 | P0092 | 280M | 820 | 551 | 433 | 2 x M63 x 1.5 | 210 | 110 | 345 | 249 | 415 | 18 | 350 | 500 | 550 |
| 090 | P0140 - 180 | 280M | 820 | 551 | 433 | 2 x M63 x 1.5 | 210 | 110 | 345 | 249 | 415 | 18 | 350 | 500 | 550 |
| 090 | P0270 | 280M | 820 | 551 | 433 | 2 x M63 x 1.5 | 210 | 110 | 345 | 249 | 415 | 18 | 350 | 500 | 550 |
| 090 | P0360 | 280M | 820 | 551 | 433 | 2 x M63 x 1.5 | 210 | 110 | 345 | 249 | 415 | 18 | 350 | 500 | 550 |
| 110 | P0140 - 180 | 315S | 912 | 616 | 515 | 2 x M63 x 1.5 | 238 | 110 | 404 | 298.5 | 495 | 22 | 380 | 600 | 660 |
| 110 | P0270 | 315S | 912 | 616 | 515 | 2 x M63 x 1.5 | 238 | 110 | 404 | 298.5 | 495 | 22 | 380 | 600 | 660 |
| 110 | P0360 | 315S | 912 | 616 | 515 | 2 x M63 x 1.5 | 238 | 110 | 404 | 298.5 | 495 | 22 | 380 | 600 | 660 |
| 132 | P0140 - 180 | 315M | 1077 | 616 | 515 | 2 x M63 x 1.5 | 238 | 110 | 404 | 298.5 | 495 | 22 | 380 | 600 | 660 |
| 132 | P0270 | 315M | 1077 | 616 | 515 | 2 x M63 x 1.5 | 238 | 110 | 404 | 298.5 | 495 | 22 | 380 | 600 | 660 |
| 132 | P0360 | 315M | 1077 | 616 | 515 | 2 x M63 x 1.5 | 238 | 110 | 404 | 298.5 | 495 | 22 | 380 | 600 | 660 |
| 160 | P0180 | 315L | 1077 | 616 | 515 | 2 x M63 x 1.5 | 238 | 110 | 404 | 298.5 | 495 | 22 | 380 | 600 | 660 |
| 160 | P0270 | 315L | 1077 | 616 | 515 | 2 x M63 x 1.5 | 238 | 110 | 404 | 298.5 | 495 | 22 | 380 | 600 | 660 |
| 160 | P0360 | 315L | 1077 | 616 | 515 | 2 x M63 x 1.5 | 238 | 110 | 404 | 298.5 | 495 | 22 | 380 | 600 | 660 |
| 200 - 250 | P0270 | 315L | 1232 | 616 | 515 | 2 x M63 x 1.5 | 238 | 110 | 404 | 298.5 | 495 | 22 | 380 | 600 | 660 |
| 200 - 250 | P0360 | 315L | 1232 | 616 | 515 | 2 x M63 x 1.5 | 238 | 110 | 404 | 298.5 | 495 | 22 | 380 | 600 | 660 |

continuing next page 

Axial piston pump with standard asynchronous motor



| Motor code | Pump code | D [mm] | D1 [mm] | D2 [mm] | E [mm] | E1 [mm] | E2 [mm] | E3 [mm] | E4 [mm] | E5 [mm] | E6 [mm] | E7 [mm] | EP (PN 400 bar) | ES |
|------------|-------------|--------|---------|---------|--------|---------|---------|---------|---------|---------|---------|---------|----------------------|-----------------------------------|
| 004 | P0016 | 135 | 180 | 250 | 347 | 332.5 | 305.5 | 15 | 132 | 79 | 94 | 130 | DN19 ; 4xM10x18 deep | DN32 ; PN 250 bar ; 4xM10x18 deep |
| 006 / 008 | P0016 - 28 | 155 | 205 | 300 | 367 | 352.5 | 325.5 | 15 | 132 | 79 | 94 | 130 | DN19 ; 4xM10x18 deep | DN32 ; PN 250 bar ; 4xM10x18 deep |
| 011 / 015 | P0016 - 28 | 188 | 225 | 350 | 400 | 385.5 | 358.5 | 15 | 132 | 79 | 94 | 130 | DN19 ; 4xM10x18 deep | DN32 ; PN 250 bar ; 4xM10x18 deep |
| 011 / 015 | P0032 - 46 | 204 | 225 | 350 | 452 | 431 | 401 | 17 | 160 | 97 | 112.5 | 130 | DN25 ; 4xM12x18 deep | DN38 ; PN 200 bar ; 4xM12x18 deep |
| 019 / 022 | P0020 - 28 | 204 | 225 | 350 | 416 | 401.5 | 374.5 | 15 | 132 | 79 | 94 | 130 | DN19 ; 4xM10x18 deep | DN32 ; PN 250 bar ; 4xM10x18 deep |
| 019 / 022 | P0032 - 46 | 204 | 225 | 350 | 452 | 431 | 401 | 17 | 160 | 97 | 112.5 | 130 | DN25 ; 4xM12x18 deep | DN38 ; PN 200 bar ; 4xM12x18 deep |
| 019 / 022 | P0063 / 80 | 228 | 248 | 350 | 536 | 515 | 480 | 26 | 200 | 120 | 132 | 133 | DN32 ; 4xM12x20 deep | DN51 ; PN 200 bar ; 4xM12x20 deep |
| 030 | P0028 | 204 | 230 | 400 | 416 | 401.5 | 374.5 | 15 | 132 | 79 | 94 | 130 | DN19 ; 4xM10x18 deep | DN32 ; PN 250 bar ; 4xM10x18 deep |
| 030 | P0032 - 46 | 204 | 230 | 400 | 452 | 431 | 401 | 17 | 160 | 97 | 112.5 | 130 | DN25 ; 4xM12x18 deep | DN38 ; PN 200 bar ; 4xM12x18 deep |
| 030 | P0063 - 92 | 228 | 279 | 400 | 536 | 515 | 480 | 26 | 200 | 120 | 132 | 133 | DN32 ; 4xM12x20 deep | DN51 ; PN 200 bar ; 4xM12x20 deep |
| 037 | P0040 - 46 | 234 | 260 | 450 | 482 | 461 | 431 | 17 | 160 | 97 | 112.5 | 130 | DN25 ; 4xM12x18 deep | DN38 ; PN 200 bar ; 4xM12x18 deep |
| 037 | P0063 - 92 | 262 | 315 | 450 | 570 | 549 | 514 | 26 | 200 | 120 | 132 | 133 | DN32 ; 4xM12x20 deep | DN51 ; PN 200 bar ; 4xM12x20 deep |
| 037 | P0140 | 262 | 315 | 450 | 648 | 612 | 557 *) | 0 | 200 | 145 | 158 | 133 | DN32 ; 4xM12x20 deep | DN64 ; PN 160 bar ; 4xM12x20 deep |
| 045 | P0046 | 234 | 260 | 450 | 482 | 461 | 431 | 17 | 160 | 97 | 112.5 | 130 | DN25 ; 4xM12x18 deep | DN38 ; PN 200 bar ; 4xM12x18 deep |
| 045 | P0063 - 92 | 262 | 315 | 450 | 570 | 549 | 514 | 26 | 200 | 120 | 132 | 133 | DN32 ; 4xM12x20 deep | DN51 ; PN 200 bar ; 4xM12x20 deep |
| 045 | P0140 - 180 | 262 | 315 | 450 | 648 | 612 | 557 *) | 0 | 200 | 145 | 158 | 133 | DN32 ; 4xM12x20 deep | DN64 ; PN 160 bar ; 4xM12x20 deep |
| 055 | P0063 - 92 | 265 | 360 | 550 | 573 | 552 | 517 | 26 | 200 | 120 | 132 | 133 | DN32 ; 4xM12x20 deep | DN51 ; PN 200 bar ; 4xM12x20 deep |
| 055 | P0140 - 180 | 265 | 360 | 550 | 651 | 615 | 560 *) | 0 | 200 | 145 | 158 | 133 | DN32 ; 4xM12x20 deep | DN64 ; PN 160 bar ; 4xM12x20 deep |
| 075 | P0080 - 92 | 265 | 360 | 550 | 573 | 552 | 517 | 26 | 200 | 120 | 132 | 133 | DN32 ; 4xM12x20 deep | DN51 ; PN 200 bar ; 4xM12x20 deep |
| 075 | P0140 - 180 | 265 | 360 | 550 | 651 | 615 | 560 *) | 0 | 200 | 145 | 158 | 133 | DN32 ; 4xM12x20 deep | DN64 ; PN 160 bar ; 4xM12x20 deep |
| 075 | P0270 | 295 | 360 | 550 | 805 | 767.5 | 698 | 0 | 265 | 176 | 184 | 133 | DN38 ; 4xM16x30 deep | DN89 ; PN 35 bar ; 4xM16x30 deep |
| 090 | P0092 | 265 | 360 | 550 | 573 | 552 | 517 | 26 | 200 | 120 | 132 | 133 | DN32 ; 4xM12x20 deep | DN51 ; PN 200 bar ; 4xM12x20 deep |
| 090 | P0140 - 180 | 265 | 360 | 550 | 651 | 615 | 560 *) | 0 | 200 | 145 | 158 | 133 | DN32 ; 4xM12x20 deep | DN64 ; PN 160 bar ; 4xM12x20 deep |
| 090 | P0270 | 295 | 360 | 550 | 805 | 767.5 | 698 | 0 | 265 | 176 | 184 | 133 | DN38 ; 4xM16x30 deep | DN89 ; PN 35 bar ; 4xM16x30 deep |
| 090 | P0360 | 315 | 400 | 550 | 825 | 792 | 723 | 0 | 250 | 176 | 184 | 133 | DN38 ; 4xM16x30 deep | DN102 ; PN 35 bar ; 4xM16x30 deep |
| 110 | P0140 - 180 | 310 | 410 | 660 | 696 | 660 | 605 *) | 0 | 200 | 145 | 158 | 133 | DN32 ; 4xM12x20 deep | DN64 ; PN 160 bar ; 4xM12x20 deep |
| 110 | P0270 | 330 | 400 | 660 | 840 | 802.5 | 733 | 0 | 265 | 176 | 184 | 133 | DN38 ; 4xM16x30 deep | DN89 ; PN 35 bar ; 4xM16x30 deep |
| 110 | P0360 | 330 | 400 | 660 | 840 | 807 | 738 | 0 | 250 | 176 | 184 | 133 | DN38 ; 4xM16x30 deep | DN102 ; PN 35 bar ; 4xM16x30 deep |
| 132 | P0140 - 180 | 310 | 410 | 660 | 696 | 660 | 605 *) | 0 | 200 | 145 | 158 | 133 | DN32 ; 4xM12x20 deep | DN64 ; PN 160 bar ; 4xM12x20 deep |
| 132 | P0270 | 310 | 410 | 660 | 696 | 660 | 605 | 0 | 200 | 145 | 158 | 133 | DN32 ; 4xM12x20 deep | DN64 ; PN 160 bar ; 4xM12x20 deep |
| 132 | P0360 | 330 | 400 | 660 | 840 | 802.5 | 733 | 0 | 265 | 176 | 184 | 133 | DN38 ; 4xM16x30 deep | DN89 ; PN 35 bar ; 4xM16x30 deep |
| 160 | P0180 | 330 | 400 | 660 | 840 | 807 | 738 *) | 0 | 250 | 176 | 184 | 133 | DN38 ; 4xM16x30 deep | DN102 ; PN 35 bar ; 4xM16x30 deep |
| 160 | P0270 | 330 | 400 | 660 | 716 | 680 | 625 | 0 | 200 | 145 | 158 | 133 | DN32 ; 4xM12x20 deep | DN64 ; PN 160 bar ; 4xM12x20 deep |
| 160 | P0360 | 330 | 400 | 660 | 840 | 802.5 | 733 | 0 | 265 | 176 | 184 | 133 | DN38 ; 4xM16x30 deep | DN89 ; PN 35 bar ; 4xM16x30 deep |
| 200 - 250 | P0270 | 330 | 400 | 660 | 840 | 802.5 | 733 | 0 | 265 | 176 | 184 | 133 | DN38 ; 4xM16x30 deep | DN89 ; PN 35 bar ; 4xM16x30 deep |
| 200 - 250 | P0360 | 330 | 400 | 660 | 840 | 807 | 738 | 0 | 250 | 176 | 184 | 133 | DN38 ; 4xM16x30 deep | DN102 ; PN 35 bar ; 4xM16x30 deep |

EP: Pressure port, flange acc. to ISO 6162

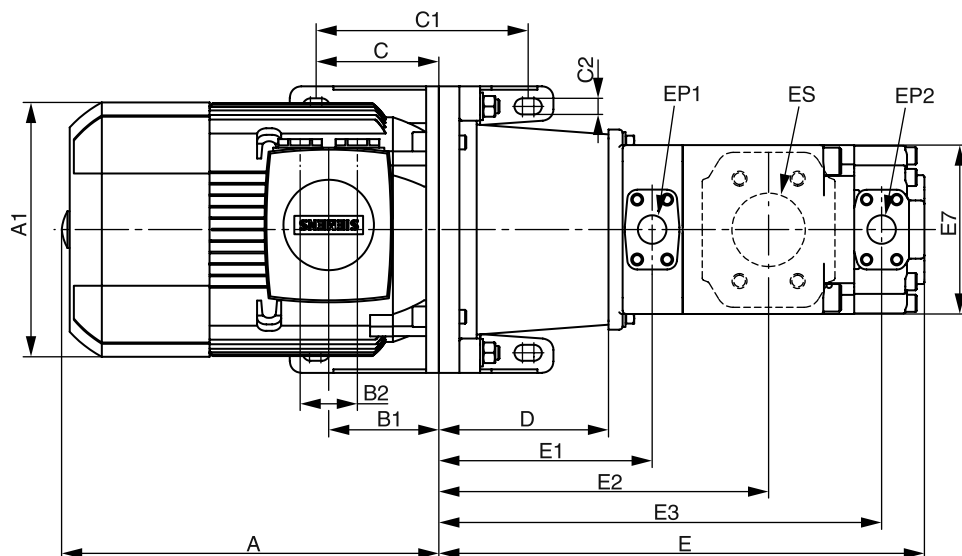
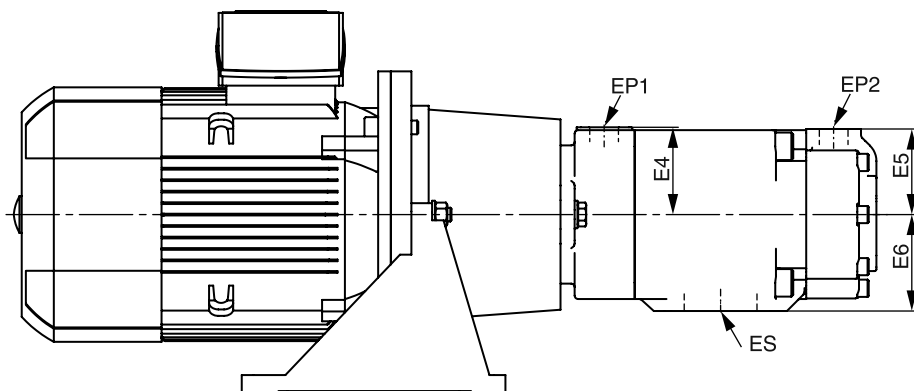
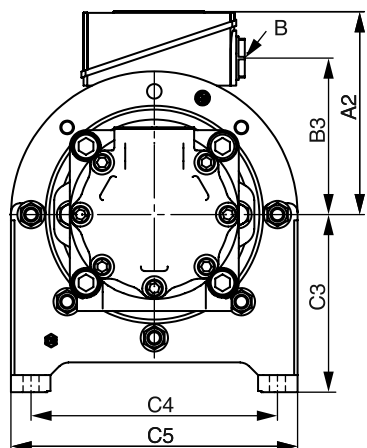
ES: Suction port, flange acc. to ISO 6162

¹⁾ Dimension for suction port +10 mm

Dimensions

Drive Controlled Pump

Double vane pump with standard asynchronous motor



| Motor code | Motor size | Pump code | A [mm] | A1 [mm] | A2 [mm] | B [mm] | B1 [mm] | B2 [mm] | B3 [mm] | C [mm] | C1 [mm] | C2 [mm] | C3 [mm] | C4 [mm] | C5 [mm] | D [mm] | D1 [mm] | D2 [mm] |
|------------|------------|-----------|--------|---------|---------|--------|---------|---------|---------|--------|---------|---------|---------|---------|---------|--------|---------|---------|
| 004 | 112M | J**** | 222 | 100.5 | 46 | 382 | 48 | 150 | 195 | 107.5 | 185 | 14 | 155 | 215 | 250 | 148 | 166 | 250 |
| 006 - 008 | 132S/132M | J**** | 262 | 115.5 | 61 | 456.5 | 48 | 169 | 214.5 | 130.5 | 225 | 14 | 185 | 265 | 300 | 168 | 220 | 300 |
| 011 - 015 | 160M/160L | J**** | 314 | 145 | 96 | 594 | 60 | 213 | 261 | 149 | 265 | 18 | 235 | 300 | 350 | 204 | 225 | 350 |
| 011 - 015 | 160M/160L | K**** | 314 | 145 | 96 | 594 | 60 | 213 | 261 | 149 | 265 | 18 | 235 | 300 | 350 | 228 | 248 | 350 |
| 015 | 160L | L**** | 314 | 145 | 96 | 594 | 60 | 213 | 261 | 149 | 265 | 18 | 235 | 300 | 350 | 228 | 248 | 350 |
| 019 - 022 | 180M/180L | J**** | 356 | 155 | 160 | 668 | 60 | 234 | 286 | 149 | 265 | 18 | 235 | 300 | 350 | 204 | 225 | 350 |
| 019 - 022 | 180M/180L | K**** | 356 | 155 | 160 | 668 | 60 | 234 | 286 | 149 | 265 | 18 | 235 | 300 | 350 | 228 | 248 | 350 |
| 019 - 022 | 180M/180L | L**** | 356 | 155 | 160 | 668 | 60 | 234 | 286 | 149 | 265 | 18 | 235 | 300 | 350 | 228 | 248 | 350 |
| 030 | 200L | J**** | 396 | 164 | 230 | 721 | 85 | 259 | 315 | 174 | 300 | 18 | 260 | 350 | 400 | 204 | 230 | 400 |
| 030 | 200L | K**** | 396 | 164 | 230 | 721 | 85 | 259 | 315 | 174 | 300 | 18 | 260 | 350 | 400 | 228 | 279 | 400 |
| 030 | 200L | L**** | 396 | 164 | 230 | 721 | 85 | 259 | 315 | 174 | 300 | 18 | 260 | 350 | 400 | 228 | 279 | 400 |
| 037 | 225S | J**** | 449 | 164 | 280 | 788 | 85 | 282 | 338 | 199 | 335 | 18 | 295 | 400 | 450 | 262 | 315 | 450 |
| 037 | 225S | K**** | 449 | 164 | 280 | 788 | 85 | 282 | 338 | 199 | 335 | 18 | 295 | 400 | 450 | 262 | 315 | 450 |
| 037 | 225S | L**** | 449 | 164 | 280 | 788 | 85 | 282 | 338 | 199 | 335 | 18 | 295 | 400 | 450 | 234 | 260 | 450 |
| 045 | 225M | J**** | 449 | 164 | 305 | 848 | 85 | 282 | 338 | 199 | 335 | 18 | 295 | 400 | 450 | 262 | 315 | 450 |
| 045 | 225M | K**** | 449 | 164 | 305 | 848 | 85 | 282 | 338 | 199 | 335 | 18 | 295 | 400 | 450 | 262 | 315 | 450 |
| 045 | 225M | L**** | 449 | 164 | 305 | 848 | 85 | 282 | 338 | 199 | 335 | 18 | 295 | 400 | 450 | 234 | 260 | 450 |
| 055 | 250M | J**** | 497 | 192 | 385 | 887 | 110 | 322 | 410 | 249 | 415 | 18 | 350 | 500 | 550 | 248 | 340 | 550 |
| 055 | 250M | K**** | 497 | 192 | 385 | 887 | 110 | 322 | 410 | 249 | 415 | 18 | 350 | 500 | 550 | 265 | 450 | 550 |
| 055 | 250M | L**** | 497 | 192 | 385 | 887 | 110 | 322 | 410 | 249 | 415 | 18 | 350 | 500 | 550 | 265 | 450 | 550 |
| 075 | 280S | J**** | 551 | 210 | 550 | 960 | 110 | 345 | 433 | 249 | 415 | 18 | 350 | 500 | 550 | 265 | 450 | 550 |
| 075 - 090 | 280S/280M | K**** | 551 | 210 | 550 | 960 | 110 | 345 | 433 | 249 | 415 | 18 | 350 | 500 | 550 | 265 | 450 | 550 |
| 075 - 090 | 280S/280M | L**** | 551 | 210 | 550 | 960 | 110 | 345 | 433 | 249 | 415 | 18 | 350 | 500 | 550 | 265 | 360 | 550 |
| 110 | 315S | K**** | 616 | 238 | 760 | 1082 | 110 | 404 | 515 | 249 | 415 | 18 | 350 | 500 | 550 | 265 | 450 | 550 |
| 110 | 315S | L**** | 616 | 238 | 760 | 1082 | 110 | 404 | 515 | 298.5 | 495 | 22 | 380 | 600 | 660 | 310 | 410 | 660 |
| 132 - 160 | 315M/315L | L**** | 616 | 238 | 860 | 1247 | 110 | 404 | 515 | 298.5 | 495 | 22 | 380 | 600 | 660 | 310 | 410 | 660 |

| Motor code | E [mm] | E1 [mm] | E2 [mm] | E3 [mm] | E4 [mm] | E5 [mm] | E6 [mm] | E7 [mm] | EP1 | EP2 | ES |
|------------|--------|---------|---------|---------|---------|---------|---------|---------|----------------------------|--------------------------|---------------------------|
| 004 | 410.4 | 186.1 | 287.7 | 386.3 | 76.2 | 74.7 | 84.1 | 140 | 1"; 4x M10 x 19 deep | 1"; 4x M10 x 19 deep | 2 1/2"; 4x M12x 22.4 deep |
| 006 - 008 | 430.4 | 206.1 | 307.7 | 406.3 | 76.2 | 74.7 | 84.1 | 140 | 1"; 4x M10 x 19 deep | 1"; 4x M10 x 19 deep | 2 1/2"; 4x M12x 22.4 deep |
| 011 - 015 | 466.4 | 242.1 | 343.7 | 442.3 | 76.2 | 74.7 | 84.1 | 140 | 1"; 4x M10 x 19 deep | 1"; 4x M10 x 19 deep | 2 1/2"; 4x M12x 22.4 deep |
| 011 - 015 | 514 | 266.1 | 380.4 | 489.9 | 82.6 | 74.7 | 88.9 | 182 | 1 1/4"; 4x M12 x 22.3 deep | 1"; 4x M10 x 19 deep | 3"; 4x M16 x 28.4 deep |
| 015 | 575.7 | 266.3 | 414.6 | 548.8 | 101.6 | 101.6 | 114.9 | 182 | 1 1/4"; 4x M12 x 22.3 deep | 1 1/4"; 4x M12 x 24 deep | 4"; 4x M16 x 30 deep |
| 019 - 022 | 466.4 | 242.1 | 343.7 | 442.3 | 76.2 | 74.7 | 84.1 | 140 | 1"; 4x M10 x 19 deep | 1"; 4x M10 x 19 deep | 2 1/2"; 4x M12x 22.4 deep |
| 019 - 022 | 514 | 266.1 | 380.4 | 489.9 | 82.6 | 74.7 | 88.9 | 182 | 1 1/4"; 4x M12 x 22.3 deep | 1"; 4x M10 x 19 deep | 3"; 4x M16 x 28.4 deep |
| 019 - 022 | 575.7 | 266.3 | 414.6 | 548.8 | 101.6 | 101.6 | 114.9 | 182 | 1 1/4"; 4x M12 x 22.3 deep | 1 1/4"; 4x M12 x 24 deep | 4"; 4x M16 x 30 deep |
| 030 | 466.4 | 242.1 | 343.7 | 442.3 | 76.2 | 74.7 | 84.1 | 140 | 1"; 4x M10 x 19 deep | 1"; 4x M10 x 19 deep | 2 1/2"; 4x M12x 22.4 deep |
| 030 | 514 | 266.1 | 380.4 | 489.9 | 82.6 | 74.7 | 88.9 | 182 | 1 1/4"; 4x M12 x 22.3 deep | 1"; 4x M10 x 19 deep | 3"; 4x M16 x 28.4 deep |
| 030 | 575.7 | 266.3 | 414.6 | 548.8 | 101.6 | 101.6 | 114.9 | 182 | 1 1/4"; 4x M12 x 22.3 deep | 1 1/4"; 4x M12 x 24 deep | 4"; 4x M16 x 30 deep |
| 037 | 524.4 | 300.1 | 401.7 | 500.3 | 76.2 | 74.7 | 84.1 | 140 | 1"; 4x M10 x 19 deep | 1"; 4x M10 x 19 deep | 2 1/2"; 4x M12x 22.4 deep |
| 037 | 548 | 300.1 | 414.4 | 523.9 | 82.6 | 74.7 | 88.9 | 182 | 1 1/4"; 4x M12 x 22.3 deep | 1"; 4x M10 x 19 deep | 3"; 4x M16 x 28.4 deep |
| 037 | 581.7 | 272.3 | 420.6 | 554.8 | 101.6 | 101.6 | 114.9 | 182 | 1 1/4"; 4x M12 x 22.3 deep | 1 1/4"; 4x M12 x 24 deep | 4"; 4x M16 x 30 deep |
| 045 | 524.4 | 300.1 | 401.7 | 500.3 | 76.2 | 74.7 | 84.1 | 140 | 1"; 4x M10 x 19 deep | 1"; 4x M10 x 19 deep | 2 1/2"; 4x M12x 22.4 deep |
| 045 | 548 | 300.1 | 414.4 | 523.9 | 82.6 | 74.7 | 88.9 | 182 | 1 1/4"; 4x M12 x 22.3 deep | 1"; 4x M10 x 19 deep | 3"; 4x M16 x 28.4 deep |
| 045 | 581.7 | 272.3 | 420.6 | 554.8 | 101.6 | 101.6 | 114.9 | 182 | 1 1/4"; 4x M12 x 22.3 deep | 1 1/4"; 4x M12 x 24 deep | 4"; 4x M16 x 30 deep |
| 055 | 510.4 | 286.1 | 387.7 | 486.3 | 76.2 | 74.7 | 84.1 | 140 | 1"; 4x M10 x 19 deep | 1"; 4x M10 x 19 deep | 2 1/2"; 4x M12x 22.4 deep |
| 055 | 551 | 303.1 | 417.4 | 526.9 | 82.6 | 74.7 | 88.9 | 182 | 1 1/4"; 4x M12 x 22.3 deep | 1"; 4x M10 x 19 deep | 3"; 4x M16 x 28.4 deep |
| 055 | 612.7 | 303.3 | 451.6 | 585.8 | 101.6 | 101.6 | 114.9 | 182 | 1 1/4"; 4x M12 x 22.3 deep | 1 1/4"; 4x M12 x 24 deep | 4"; 4x M16 x 30 deep |
| 075 | 527.4 | 303.1 | 404.7 | 503.3 | 76.2 | 74.7 | 84.1 | 140 | 1"; 4x M10 x 19 deep | 1"; 4x M10 x 19 deep | 2 1/2"; 4x M12x 22.4 deep |
| 075 - 090 | 551 | 303.1 | 417.4 | 526.9 | 82.6 | 74.7 | 88.9 | 182 | 1 1/4"; 4x M12 x 22.3 deep | 1"; 4x M10 x 19 deep | 3"; 4x M16 x 28.4 deep |
| 075 - 090 | 612.7 | 303.3 | 451.6 | 585.8 | 101.6 | 101.6 | 114.9 | 182 | 1 1/4"; 4x M12 x 22.3 deep | 1 1/4"; 4x M12 x 24 deep | 4"; 4x M16 x 30 deep |
| 110 | 551 | 303.1 | 417.4 | 526.9 | 82.6 | 74.7 | 88.9 | 182 | 1 1/4"; 4x M12 x 22.3 deep | 1"; 4x M10 x 19 deep | 3"; 4x M16 x 28.4 deep |
| 110 | 657.7 | 348.3 | 496.6 | 630.8 | 101.6 | 101.6 | 114.9 | 182 | 1 1/4"; 4x M12 x 22.3 deep | 1 1/4"; 4x M12 x 24 deep | 4"; 4x M16 x 30 deep |
| 132 - 160 | 657.7 | 348.3 | 496.6 | 630.8 | 101.6 | 101.6 | 114.9 | 182 | 1 1/4"; 4x M12 x 22.3 deep | 1 1/4"; 4x M12 x 24 deep | 4"; 4x M16 x 30 deep |

Pump types T7EB, T7ED and T7EE (see ordering code) on request

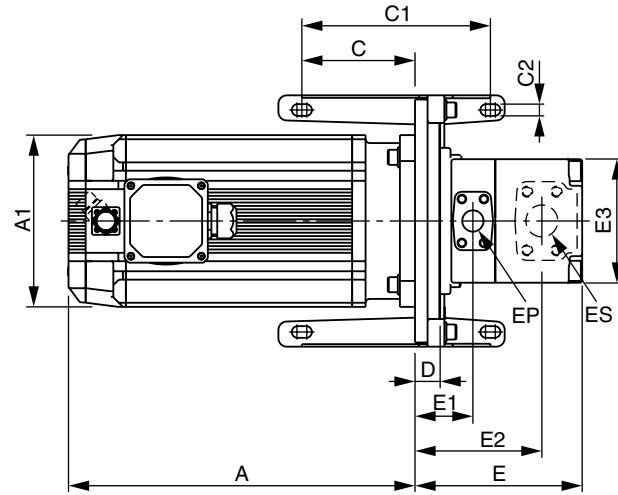
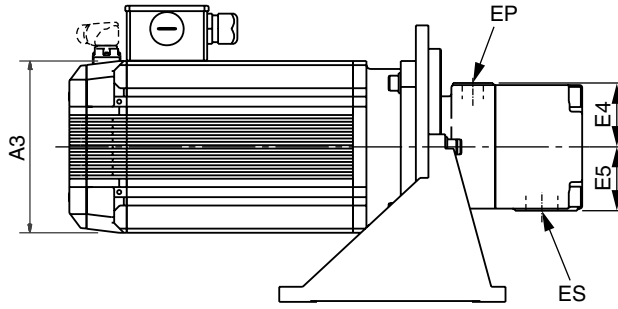
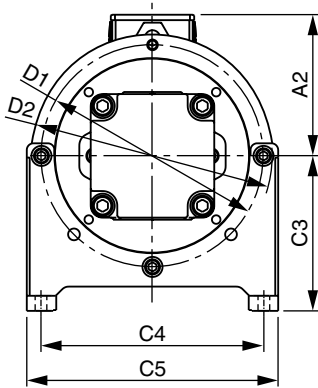
EP* : Pressure ports, SAE 4-hole flange - J518 - ISO 6162-1
 ES : Suction ports, SAE 4-hole flange - J518 - ISO 6162-1



Dimensions

Drive Controlled Pump

Vane pump with synchronous motor



| Motor code | Motor size | Pump code | A [mm] | A1 [mm] | A2 [mm] | A3 [mm] | C [mm] | C1 [mm] | C2 [mm] | C3 [mm] | C4 [mm] | C5 [mm] | D [mm] | D1 [mm] | D2 [mm] |
|------------|------------|---------------|-----------|---------|---------|---------|--------|---------|---------|---------|---------|---------|--------|---------|---------|
| 004 - 6P6 | MH 145 | A0006 - A0013 | 292 - 416 | 145 | 125 | 145 | 125 | 185 | 14 | 155 | 215 | 250 | 30 | 215 | 240 |
| 4P2 - 019 | MH 205 | A0006 - A0025 | 239 - 480 | 205 | 172 | 205 | 125 | 185 | 14 | 155 | 215 | 250 | 30 | 215 | 240 |
| 006 - 019 | MH 205 | B0009 - B0011 | 306 - 480 | 205 | 172 | 205 | 150 | 225 | 14 | 185 | 265 | 300 | 30 | 265 | 290 |
| 027 - 045 | MH 265 | A0017 - A0025 | 340 - 447 | 265 | 229 | 265 | 150 | 225 | 14 | 185 | 265 | 300 | 30 | 265 | 290 |
| 027 - 058 | MH 265 | B0009 - B0015 | 340 - 554 | 265 | 229 | 265 | 150 | 225 | 14 | 185 | 265 | 300 | 30 | 265 | 290 |
| 027 - 068 | MH 265 | D0017 - D0042 | 340 - 661 | 265 | 229 | 265 | 150 | 225 | 14 | 185 | 265 | 300 | 30 | 265 | 325 |

| Motor code | E [mm] | E1 [mm] | E2 [mm] | E3 [mm] | E4 [mm] | E5 [mm] | EP | ES |
|------------|--------|---------|---------|---------|---------|---------|-----------------------------|-----------------------------|
| 004 - 6P6 | 168.5 | 68.2 | 146.3 | 110 | 68 | 63.5 | 1 1/4" BSPP | 3/4" BSPP |
| 4P2 - 019 | 168.5 | 68.2 | 146.3 | 110 | 68 | 63.5 | 1 1/4" BSPP | 3/4" BSPP |
| 006 - 019 | 198.5 | 112.3 | 68.1 | 140 | 76.2 | 76.2 | 1 1/2" ; 4x M12 x 22.4 deep | 1" ; 4x M10 x 19 deep |
| 027 - 045 | 168.5 | 68.2 | 146.3 | 110 | 68 | 63.5 | 1 1/4" BSPP | 3/4" BSPP |
| 027 - 058 | 198.5 | 112.3 | 68.1 | 140 | 76.2 | 76.2 | 1 1/2" ; 4x M12 x 22.4 deep | 1" ; 4x M10 x 19 deep |
| 027 - 068 | 214.9 | 117.4 | 68.1 | 147.4 | 82.6 | 82.6 | 2 1/2" ; 4x M12 x 23.9 deep | 1 1/4" ; 4x M12 x 22.3 deep |

| Motor code | Motor size | A [mm] |
|------------|------------|--------|
| 1P4 | MH 145 | 200 |
| 2P5 | MH 145 | 231 |
| 004 | MH 145 | 292 |
| 4P1 | MH 145 | 354 |
| 4P2 | MH 205 | 239 |
| 6P6 | MH 145 | 416 |
| 008 | MH 205 | 273 |

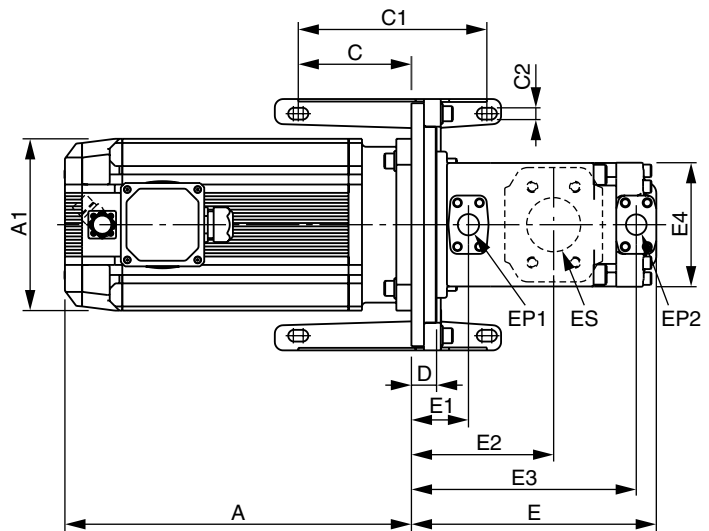
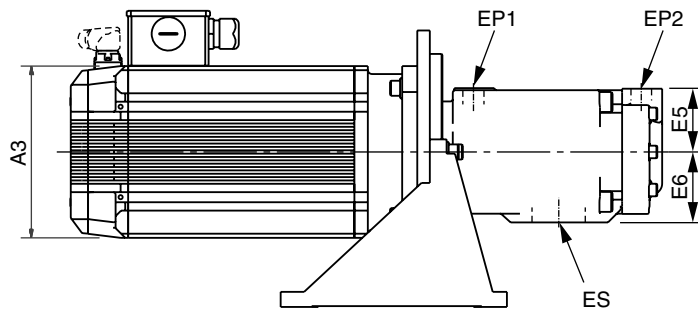
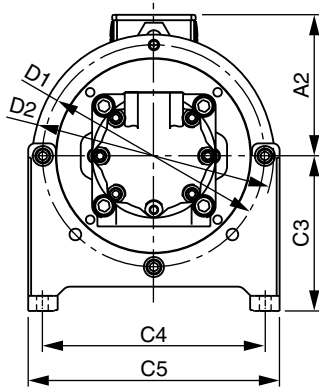
| Motor code | Motor size | A [mm] |
|------------|------------|--------|
| 013 | MH 205 | 342 |
| 016 | MH 205 | 411 |
| 019 | MH 205 | 480 |
| 027 | MH 265 | 340 |
| 045 | MH 265 | 447 |
| 058 | MH 265 | 554 |
| 068 | MH 265 | 661 |

EP: Pressure ports, BSPP or SAE 4-hole flange - J518 - ISO/DIS6162-1
 ES: Suction ports, BSPP or SAE 4-hole flange - J518 - ISO/DIS6162-1

Dimensions

Drive Controlled Pump

Double vane pump with synchronous servo motor

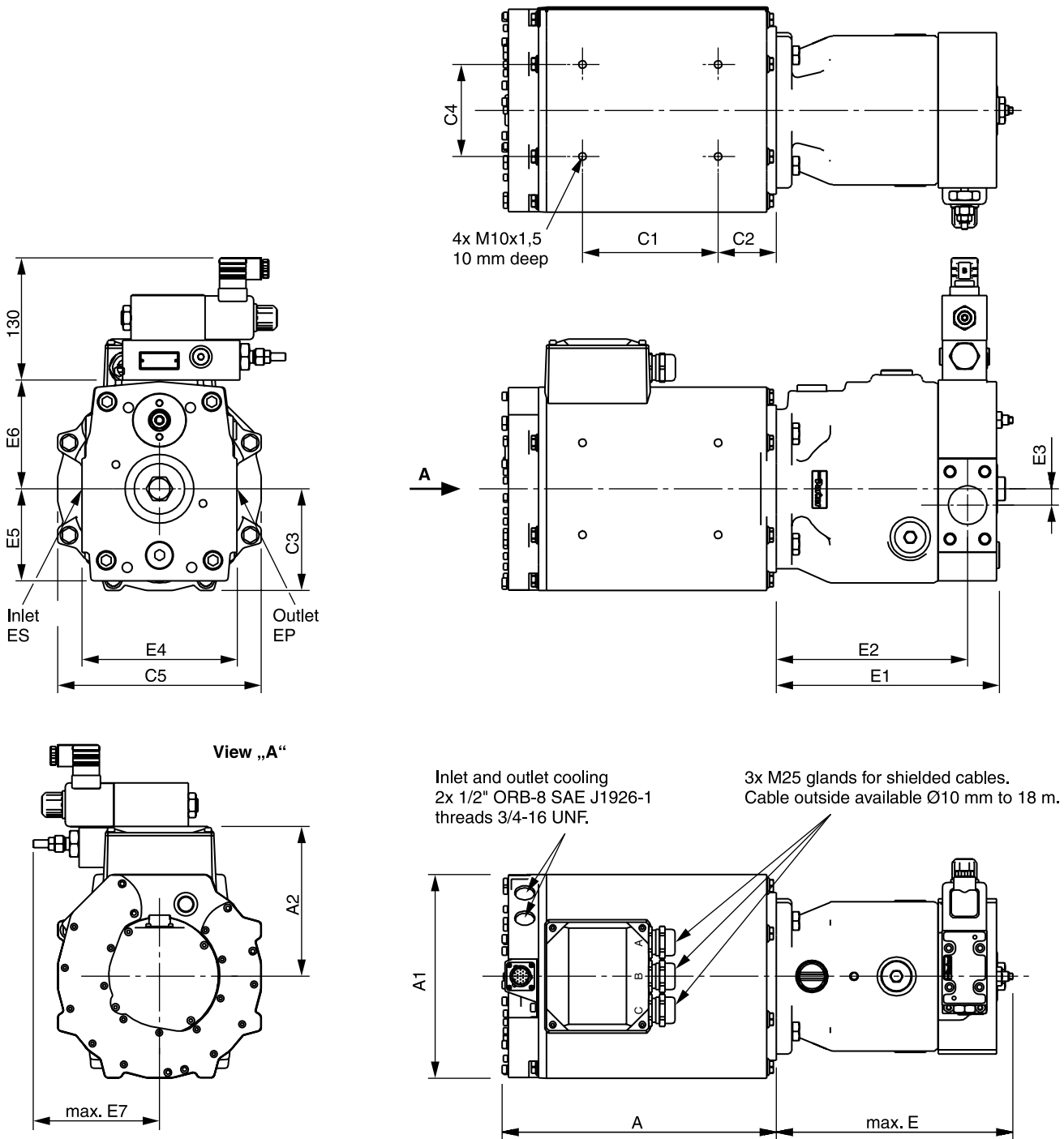


All dimensions on request

Dimensions

Drive Controlled Pump

Axial piston pump with compact synchronous servo motor



Dimensions

Drive Controlled Pump

| Motor Code | Motor size | Pump code | A [mm] | A1 [mm] | A2 [mm] | C1 [mm] | C2 [mm] | C3 [mm] | C4 [mm] | C5 [mm] | E [mm] | E1 [mm] | E2 [mm] | E3 [mm] | E4 [mm] |
|------------|------------|---------------|------------|---------|---------|----------|---------|---------|---------|---------|--------|---------|---------|---------|---------|
| 014 - 114 | GVM210 | P0016 - P0028 | 235 - 585 | 210 | 156 | 90 - 440 | 60 | 105 | 95 | 210 | 212 | 197.5 | 170.5 | 15 | 132 |
| 014 - 114 | GVM210 | P0032 - P0046 | 236 - 585 | 210 | 156 | 90 - 440 | 60 | 105 | 95 | 210 | 248 | 227 | 197 | 17 | 160 |
| 014 - 114 | GVM210 | P0063 - P0092 | 237 - 585 | 210 | 156 | 90 - 440 | 60 | 105 | 95 | 210 | 308 | 287 | 252 | 26 | 200 |
| 014 - 114 | GVM210 | P0140 - P0180 | on request | | | | | | | | | | | | |
| 014 - 114 | GVM210 | P0270 | on request | | | | | | | | | | | | |
| 014 - 114 | GVM210 | P0360 | on request | | | | | | | | | | | | |

| Motor Code | Motor size | Pump code | E5 [mm] | E6 [mm] | E7 [mm] | EP | ES |
|------------|------------|---------------|------------|---------|---------|-----------------------------------|-----------------------------------|
| 014 - 114 | GVM210 | P0016 - P0028 | 79 | 94 | 130 | DN19 ; PN 400 bar ; 4xM10x18 deep | DN32 ; PN 250 bar ; 4xM10x18 deep |
| 014 - 114 | GVM210 | P0032 - P0046 | 97 | 112.5 | 130 | DN25 ; PN 400 bar ; 4xM12x18 deep | DN38 ; PN 200 bar ; 4xM12x18 deep |
| 014 - 114 | GVM210 | P0063 - P0092 | 120 | 132 | 133 | DN32 ; PN 400 bar ; 4xM12x20 deep | DN51 ; PN 200 bar ; 4xM12x20 deep |
| 014 - 114 | GVM210 | P0140 - P0180 | on request | | | | |
| 014 - 114 | GVM210 | P0270 | on request | | | | |
| 014 - 114 | GVM210 | P0360 | on request | | | | |

| Motor Code | Motor size | A [mm] | C1 [mm] |
|------------|------------|--------|---------|
| 014 | GVM210-50 | 235 | 90 |
| 028 | GVM210-100 | 285 | 140 |
| 064 | GVM210-200 | 385 | 240 |
| 090 | GVM210-300 | 485 | 340 |
| 114 | GVM210-400 | 585 | 440 |

EP: Pressure port, flange acc. to ISO 6162

ES: Suction port, flange acc. to ISO 6162

¹⁾ Dimension for suction port +10 mm

Vane Pumps

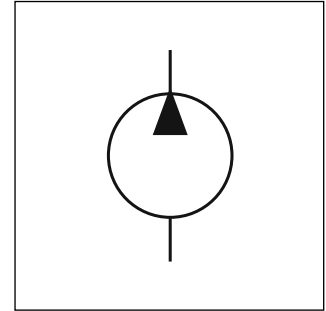
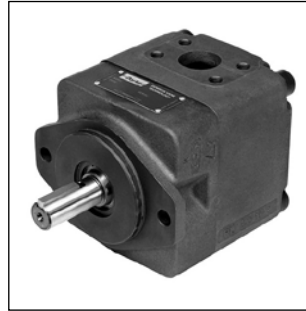
Drive Controlled Pump

Parker vane pumps are especially suited to variable speed applications. They enable very quick changes in pressure at a very high flow rate reproducibility and at a low noise level. Their minimum speed increases from zero proportional to pressure up to 300 rpm at maximum pressure. High operating pressures of up to 320 bar and small dimensions reduce installation costs. Reduced pressure increases life-span.

The vane pump forms a compact unit in combination with flange and e-motor. The design with two opposing pressure chambers prevents lateral forces working on the drive shaft. The pump cartridge design is suitable for drop-in installation. It is particularly modification and service friendly. The wide range of designs (displacement, shaft, connections, etc.) offers the best preconditions for individual solutions tailored to a customer's requirements.

Features

- High volumetric efficiency
- Low noise design
- High mechanical efficiency (generally over 94 %)
- Wide speed range (300–3000 rpm)
- Low pressure pulsation (±2 bar) reduces pipe noise
- Impervious to particle contamination thanks to the double lip design



Temporary maximum pressure

The unit T7 can be operated briefly at higher pressures than the operating pressure recommended for continuous operation if the average pressure per time unit is lower than or equal to the pressure for continuous operation. The calculation formula for the temporary maximum pressure only applies when taking the other parameters into consideration – speed, operating fluid, viscosity and degree of contamination. For a total cycle duration of over 15 minutes, please get in contact with your Parker representative.

Example: B0010

| | |
|------------|-------------------|
| Work cycle | 4 mins at 320 bar |
| | 1 mins at 35 bar |
| | 5 mins at 160 bar |

$$\frac{(4 \times 320) + (1 \times 35) + (5 \times 160)}{10} = 211.5 \text{ bar}$$

211.5 bar is lower than the operating pressure of 290 bar permitted for the continuous operation of B0010 with an HLP46 operating medium.

Technical data

| Pump code | Displacement [cm³/U] | min. speed ¹⁾ [1/min] | max. speed [1/min] | Flow rate (1500 1/min. p 140 bar) [l/min] | max. operating pressure. permanent [bar] | max. operating pressure. temporary [bar] |
|---------------|----------------------|----------------------------------|--------------------|---|--|--|
| A0006 - A0022 | 5.8 - 22.5 | 300 | 3000 | 7.0 - 31.5 | 275 | 300 |
| A0025 | 24.9 | 300 | 3000 | 36 | 240 | 275 |
| B0009 - B0010 | 28 - 31.8 | 300 | 3000 | 40.3 - 46 | 290 | 320 ¹⁾ |
| B0011 - B0014 | 35 - 45 | 300 | 3000 | 50.8 - 65.8 | 275 | 300 |
| B0015 | 50 | 300 | 2700 | 73.3 | 240 | 280 |
| D0017 - D0031 | 55 - 99.2 | 300 | 3000 | 75.9 - 142.2 | 250 | 300 |
| D0035 - D0038 | 113.4 - 120.6 | 300 | 3000 | 163.5 - 174.3 | 250 | 280 |
| D0042 | 137.5 | 300 | 2700 | 199.6 | 230 | 260 |
| E0042 - E0072 | 132.3 - 227.1 | 300 | 2200 | 132.3 - 227.1 | 210 | 240 |

Internal leakage depending on pressure, speed and pump cartridge. All values applying for standard mineral oil. For more information see catalogue HY29-0001.

¹⁾ Applies to max. operating pressure only.

²⁾ Please consult Parker for applications over 300 bar.

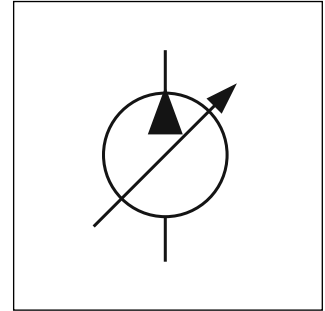
Parker axial piston pumps are particularly characterized by their low noise level based on low pulsation and a rigid housing. Drops in flow that are common when operating a positive displacement pump during the compression phase are reduced by employing a pre-compression volume. In this case, the low-pressure piston is brought to operating pressure prior to entry in the pressure kidney. As soon as the piston is in the pressure range, it connects the system and pre-compression volume and refills the oil required for compressing the next piston.

In addition to significant noise reduction, axial piston pumps offer further advantages such as high efficiency, since the holding down of the pistons works without springs and with a fixed recess. They are also installation and maintenance-friendly. The axial piston pumps feature a drive shaft for single and multiple pumps.

The optimized pump design allows to keep high operating pressures up to 350 bar even at near zero speed for a longer period.

Features

- Low noise
- Short control response times
- Service friendly
- High self-priming speed
- Compact design
- The drive for 100 % nominal torque



Pressure-regulated pumps with proportional pilot valve

The PVACRE..35-type proportional pilot valve is installed on the top of the controller. The electronic module PCD00A-400 which is required for operation is included in delivery.

This version enables a variable setting of the regulated pressure between 20 and 350 bar via an electrical signal.

Dual-Displacement Pump

Size 2 (46 ccm), 3 (92 ccm) and 4 (180 ccm) are also available as dual-displacement version. Minimum and maximum displacement volume can be mechanically and steplessly adjusted by two adjustment spindles. An on/off-valve is used for switching between the two displacement volumes.

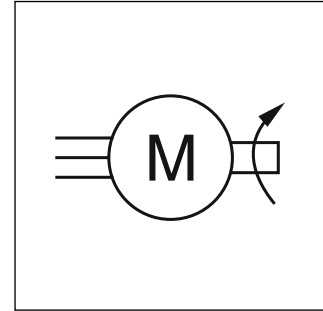
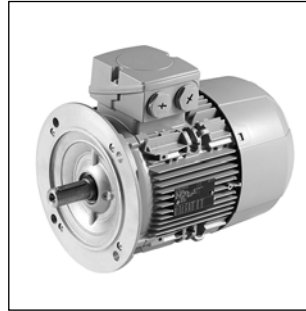
Technical data

| Pump code | Displacement max. [cm ³ /U] | Flow rate (1500 1/min) [l/min] | Nominal pressure [bar] | Max. pressure p _{max} 20 % of work cycle [bar] | Min. input pressure absolute [bar] | Max. speed at input pressure 1 bar absolute [1/min] |
|-----------|---|-----------------------------------|---------------------------|---|---------------------------------------|--|
| PV016 | 16 | 24 | 350 | 420 | 0.8 | 3000 |
| PV020 | 20 | 30 | | | | 3000 |
| PV023 | 23 | 34.5 | | | | 3000 |
| PV028 | 28 | 42 | | | | 3000 |
| PV032 | 32 | 48 | | | | 2800 |
| PV040 | 40 | 60 | | | | 2800 |
| PV046 | 46 | 69 | | | | 2800 |
| PV063 | 63 | 94.5 | | | | 2800 |
| PV080 | 80 | 120 | | | | 2500 |
| PV092 | 92 | 138 | | | | 2300 |
| PV140 | 140 | 210 | | | | 2400 |
| PV180 | 180 | 270 | | | | 2200 |
| PV270 | 270 | 405 | | | | 1800 |
| PV360 | 360 | 540 | | | | 1750 |

For more information see catalogue HY30-3245

The standard asynchronous motors are characterized by their versatility, robustness and high efficiency. They fulfill the IE2 efficiency standard (high efficiency), and therefore allow large energy savings and conserve the environment. The design offers maximum flexibility and minimum cost when installing. The comparably low weight also has a positive effect on the overall weight of the assembly.

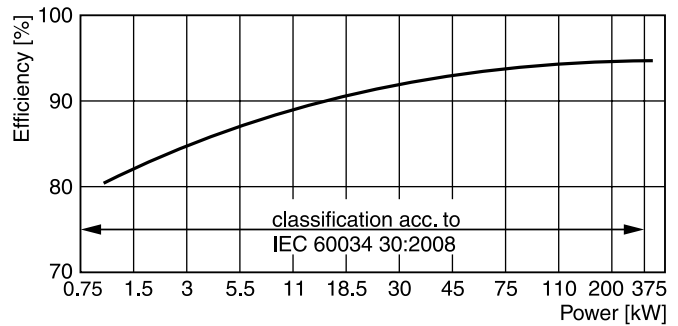
In principal, all motors can be operated on the drive at mains voltages of up to 460 V +10 %. Operating within a power range of 1.5 to 250 kW, the motors have been designed for all markets around the world. In order to achieve the best possible design, a mix of highly conductive materials is used in the rotor. The result is minimized rotor losses and excellent start-up performance.



Features

- Long life-span as a result of the simplicity and robustness of the components
- Thermistor motor protection included
- Longer motor life-span thanks to lower winding temperatures in terms of the rated load and power supply
- High overload reserves in continuous operation
- Low weight

IE2 efficiency 4-pole 50 Hz

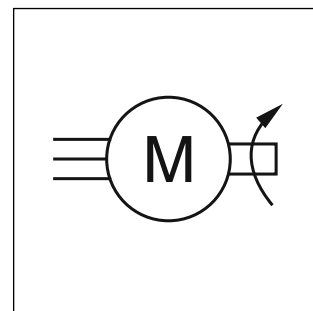


Technical data (nominal voltage 400 VAC / 50 Hz)

| Code N | Rated power [kW] | Rated speed [1/min] | Efficiency factor | Rated current [A] | Rated torque [Nm] | Weight [kg] | Max. speed [1/min] | Max. torque [Nm] |
|--------|------------------|---------------------|-------------------|-------------------|-------------------|-------------|--------------------|------------------|
| 1P5 | 1.5 | 1435 | 0.79 | 3.3 | 10 | 16 | 4200 | 34 |
| 2P2 | 2.2 | 1455 | 0.81 | 4.65 | 14 | 32 | 4200 | 46 |
| 003 | 3 | 1455 | 0.82 | 6.2 | 20 | 37 | 4200 | 62 |
| 004 | 4 | 1460 | 0.81 | 8.2 | 26 | 46 | 4200 | 83 |
| 006 | 5.5 | 1465 | 0.8 | 11.3 | 36 | 61 | 4200 | 104 |
| 008 | 7.5 | 1465 | 0.83 | 14.7 | 49 | 75 | 4200 | 142 |
| 011 | 11 | 1470 | 0.85 | 21 | 71 | 96 | 4200 | 198 |
| 015 | 15 | 1475 | 0.85 | 28 | 97 | 104 | 4200 | 291 |
| 019 | 18.5 | 1465 | 0.84 | 35 | 121 | 160 | 4200 | 411 |
| 022 | 22 | 1465 | 0.84 | 41.5 | 143 | 170 | 4200 | 500 |
| 030 | 30 | 1475 | 0.85 | 55 | 195 | 225 | 4200 | 604 |
| 037 | 37 | 1470 | 0.87 | 66 | 240 | 285 | 4500 | 720 |
| 045 | 45 | 1475 | 0.87 | 80 | 291 | 315 | 4500 | 902 |
| 055 | 55 | 1480 | 0.85 | 100 | 355 | 390 | 3700 | 1065 |
| 075 | 75 | 1485 | 0.87 | 132 | 482 | 560 | 3000 | 1397 |
| 090 | 90 | 1486 | 0.87 | 159 | 578 | 640 | 2600 | 1791 |
| 110 | 110 | 1490 | 0.86 | 195 | 705 | 750 | 2600 | 2115 |
| 132 | 132 | 1488 | 0.87 | 230 | 847 | 870 | 2600 | 2456 |
| 160 | 160 | 1488 | 0.87 | 280 | 1027 | 950 | 2600 | 3081 |
| 200 | 200 | 1490 | 0.87 | 350 | 1282 | 1120 | 2600 | 3974 |
| 250 | 250 | 1488 | 0.87 | 435 | 1605 | 1270 | 2600 | 5136 |

The MH series of high dynamic, brushless motors from Parker provides generously-sized mechanical components and low inertia. Thanks to the high quality of the Neodymium-Iron-Boron magnets and the encapsulation technique which is used to fasten them to the shaft, these motors can achieve high acceleration and withstand high overload without risking the demagnetization or detachment of the magnets.

Due to the many different shaft and flange sizes available for all models, a suitable motor can be selected for most customer requirements.



Features

- Protection class IP64
- Ambient temperature -10/+40 °C
- Rated torque 4.3 to 280 Nm
- High power density
- Lifetime-lubricated ball bearings
- Convection cooling, fan as option available

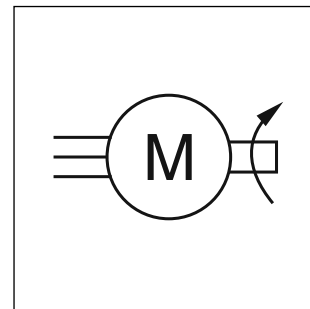
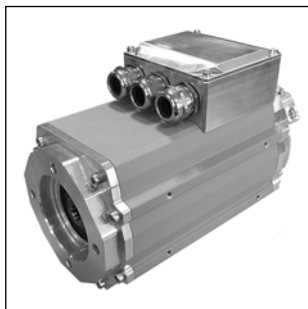
Technical data

| Code | Rated power [kW] | Rated speed ¹⁾ [1/min] | Rated current [A] | Rated torque [Nm] | Max. torque [Nm] | Torque constant kT [Nm/A] |
|-------|---------------------|--------------------------------------|----------------------|----------------------|---------------------|---------------------------------|
| 1P4 C | 1.3 | 3000 | 3.2 | 4.3 | 28 | 1.42 |
| 2P5 C | 2.5 | 3000 | 4.8 | 7.8 | 49 | 1.70 |
| 004 C | 3.9 | 3000 | 7.4 | 12.5 | 86 | 1.78 |
| 4P1 C | 5.4 | 3000 | 10.1 | 17.3 | 117 | 1.80 |
| 6P6 C | 6.7 | 3000 | 12.5 | 21.3 | 143 | 1.78 |
| 4P2 C | 4.7 | 3000 | 9.1 | 15.0 | 69 | 1.74 |
| 008 C | 8.1 | 3000 | 18.0 | 25.7 | 123 | 1.50 |
| 013 C | 13.1 | 3000 | 26.8 | 41.7 | 222 | 1.63 |
| 016 C | 16.4 | 3000 | 33.7 | 52.3 | 310 | 1.63 |
| 019 C | 19.3 | 3000 | 39.7 | 61.6 | 398 | 1.63 |
| 027 C | 27.3 | 3000 | 55.0 | 87.0 | 235 | 1.57 |
| 045 C | 45.2 | 3000 | 92.0 | 144.0 | 451 | 1.57 |
| 058 C | 58.1 | 3000 | 118.0 | 185.0 | 657 | 1.57 |
| 068 C | 67.5 | 3000 | 137.0 | 215.0 | 857 | 1.57 |
| 1P4 F | 1.8 | 3000 | 4.1 | 5.6 | 28 | 1.42 |
| 2P5 F | 3.2 | 3000 | 6.3 | 10.3 | 49 | 1.70 |
| 004 F | 5.2 | 3000 | 9.7 | 16.5 | 86 | 1.78 |
| 4P1 F | 6.8 | 3000 | 13.1 | 21.5 | 117 | 1.80 |
| 6P6 F | 8.6 | 3000 | 16.2 | 27.4 | 143 | 1.78 |
| 4P2 F | 6.1 | 3000 | 11.7 | 19.3 | 69 | 1.74 |
| 008 F | 10.5 | 3000 | 23.4 | 33.4 | 123 | 1.50 |
| 013 F | 17.0 | 3000 | 34.9 | 54.2 | 222 | 1.63 |
| 016 F | 21.4 | 3000 | 43.8 | 68.0 | 310 | 1.63 |
| 019 F | 25.2 | 3000 | 51.6 | 80.1 | 398 | 1.63 |
| 027 F | 35.5 | 3000 | 66.7 | 113.1 | 235 | 1.78 |
| 045 F | 58.8 | 3000 | 110.4 | 187.2 | 451 | 1.78 |
| 058 F | 75.6 | 3000 | 141.9 | 240.5 | 657 | 1.78 |
| 068 F | 87.8 | 3000 | 164.9 | 279.5 | 857 | 1.78 |

For more information see catalogue 192-061012 and 192-061013.

¹⁾ 2000 1/min on request.

GVM motors are brushless synchronous servo motors with water or oil cooling system and resolver or encoder as speed sensor. The permanent magnet motors provide higher efficiency than induction motors of the same power range. The liquid cooling system improves the torque curve and enables a low-noise operation. A gore vent avoids condensation in case of sudden temperature variation or during storage at low temperature.



Advantages

- High power density
- Excellent speed characteristics
- High dynamics
- Low inertia moment
- High precision
- Very robust: shock-proof, vibration-proof, salt spray resistant

Features

- IP67 standard
- Ambient temperature -40/+40 °C
- Rated torque 50 to 460 Nm
- Lifetime-lubricated bearings
- Liquid cooling system: cooling media water, oil, HFC

Technische Daten ¹⁾

Water cooling with max. inlet temperature 25 °C

| Code | Rated power [kW] | Rated speed [1/min] | Rated current [A] | Rated torque [Nm] | Max. torque [Nm] | Torque constant kT [Nm/A] | Cooling medium (p < 5 bar) [l/min] |
|------|---------------------|------------------------|----------------------|----------------------|---------------------|---------------------------------|--|
| 014 | 13.6 | 2670 | 27.8 | 48.6 | 60 | 1.76 | 1.6 |
| 028 | 28.2 | 2450 | 59.5 | 110 | 142 | 1.86 | 3.1 |
| 064 | 63.7 | 2660 | 135 | 229 | 265 | 1.7 | 6.0 |
| 090 | 90.7 | 2510 | 193 | 345 | 395 | 1.79 | 8.3 |
| 114 | 114 | 2370 | 239 | 458 | 536 | 1.92 | 10.4 |

Oli cooling with max. inlet temperature 65 °C

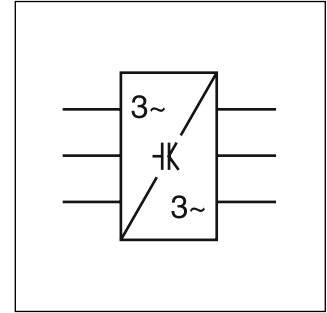
| Code | Rated power [kW] | Rated speed [1/min] | Rated current [A] | Rated torque [Nm] | Max. torque [Nm] | Torque constant kT [Nm/A] | Cooling medium (p < 5 bar) [l/min] |
|------|---------------------|------------------------|----------------------|----------------------|---------------------|---------------------------------|--|
| 014 | 11.5 | 2870 | 21.6 | 38.1 | 60 | 1.78 | 2.2 |
| 028 | 24.0 | 2650 | 45.9 | 86.3 | 142 | 1.9 | 4.2 |
| 064 | 53.7 | 2870 | 103 | 179 | 265 | 1.75 | 8.0 |
| 090 | 76.5 | 2720 | 147 | 269 | 395 | 1.84 | 11.2 |
| 114 | 94.6 | 2530 | 182 | 358 | 536 | 1.98 | 13.8 |

¹⁾ For other cooling media and cooling temperatures please contact Parker.

As a component of the Drive Controlled Pump, the AC30V series covers the entire spectrum of speed-regulated applications for asynchronous and synchronous motors. It has been designed to provide users the optimum control of pump applications with high dynamics and numerous options of control.

The AC30 has been designed with simplicity in mind, but this doesn't compromise its functionality. The flexible and modular design provides a wide range of communication options. E/A-modules can be added easily if required. Modules that are required for the Drive Controlled Pump are equipped ex works.

The setup of the Drive Controlled Pump can be done via graphical key pad or by using the pc software PDQ.



Features

- Integrated hydraulic functions
- Graphical key pad
- Integrated web server
- Sensorless vector control
- Safety torque off
- Software tool for configuration, commissioning, optimisation, programming and maintenance
- Fieldbus communication with open standards:
 - CANopen
 - DeviceNet
 - PROFIBUS
 - PROFINET
 - EtherCAT
 - Ethernet IP

The following operation modes are available:

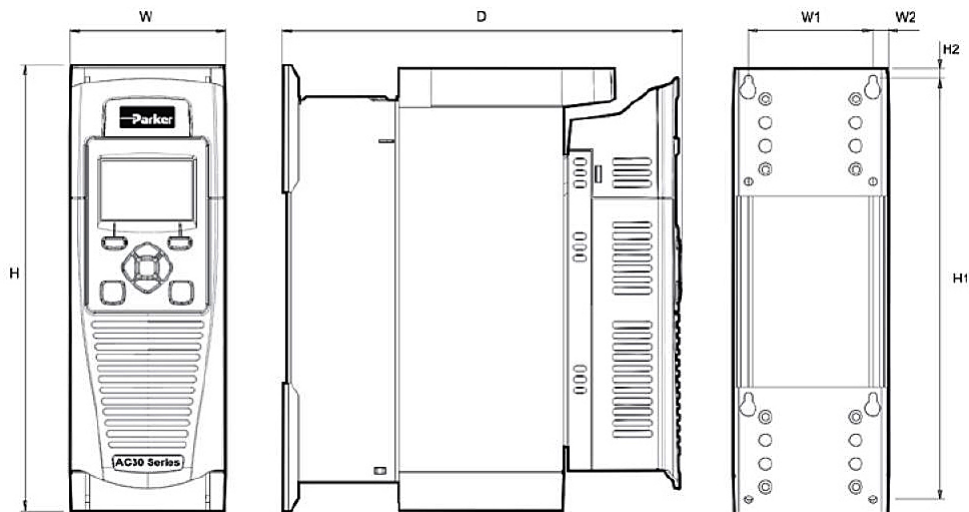
- Flow control
- Pressure control ¹⁾
- Alternating flow rate / pressure control (P/Q) ¹⁾
- eLCP (electronic load control) ¹⁾
- Accumulator charging mode ¹⁾
- Master-slave operation of several Drive Controlled Pumps

Technical data

| Electrical Characteristics | | |
|-------------------------------|-------|--|
| Rated Input Voltage | [V] | 3 x 380...480 ±10 % |
| Input Frequency | [Hz] | 45...65 |
| Maximum Switching Frequency | [kHz] | 4...12 max. (acc. derate output) |
| Overload: Heavy Duty | [%] | 150 for 60 s, 180 for 3 s |
| Overload: Normal Duty | [%] | 110 for 60 s, 180 for 3 s heavy duty FLC |
| Output Frequencies | [Hz] | 0...500 at 4 kHz switching frequency |
| | [Hz] | 0...1000 at 8 kHz switching frequency |
| | [Hz] | 0...1500 at 12 kHz switching frequency |
| Environmental Characteristics | | |
| Operating Temperature | [°C] | 0...+40 (normal duty), 0...+45 (heavy duty) 0...+50 (derate output) |
| Operating Humidity, max | [%] | 85 bei 40 °C |
| Protection class | | IP 20 |
| Altitude | [m] | 1000 over NN, derate output by 1 % per 100 m to max. 2000 m |
| Atmosphere | | Non-flammable, non-corrosive and dust free |
| Climatic conditions | | Class 3k3, as defined by EN60721-3-3 |

¹⁾ Pressure transducer is required (not included in delivery).

Dimensions

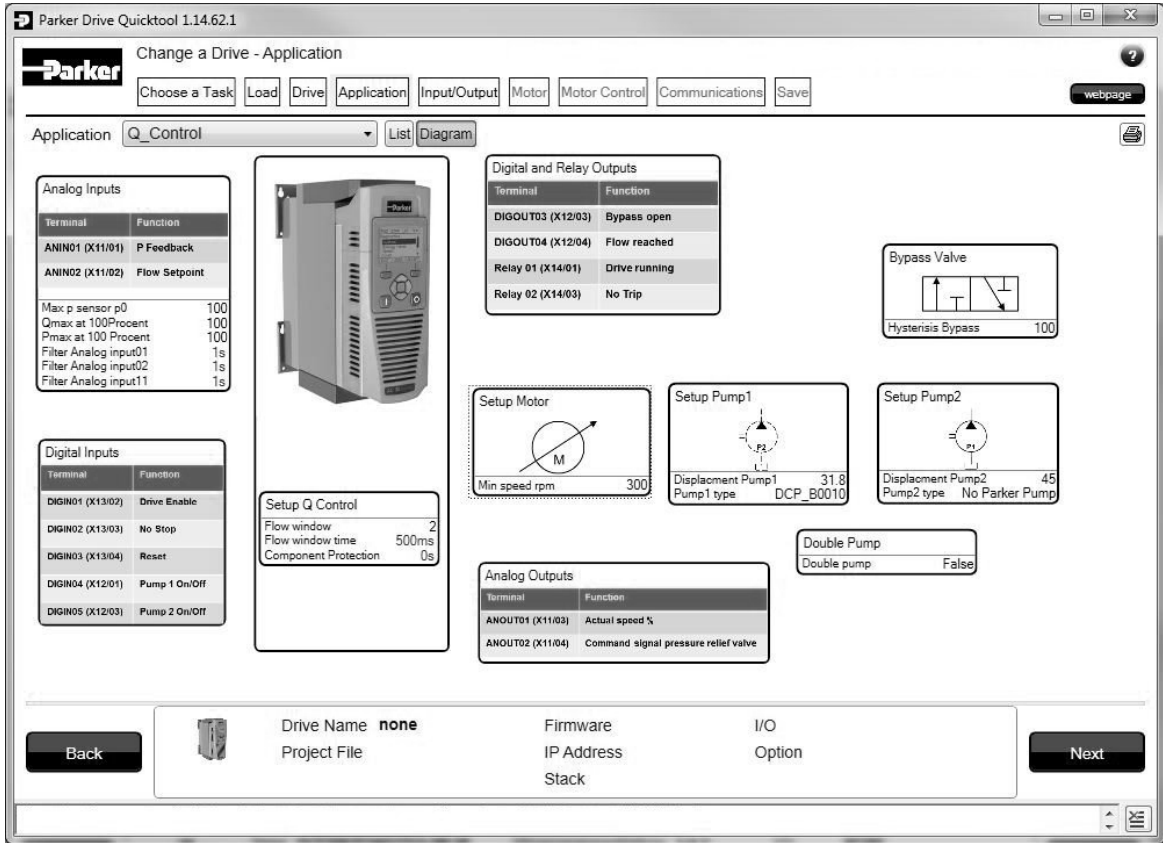


| Code | Model | Weight [kg] | Dimensions [mm] | | | | | | | Fixings |
|-----------|---------|-------------|-----------------|------|------|-----|-----|------|-----|-------------------------------------|
| | | | H | H1 | H2 | W | W1 | W2 | D | |
| 3P5 - 012 | Frame D | 4.5 | 286 | 270 | 6.5 | 100 | 80 | 10.0 | 255 | Slot 4.5 mm wide. Use M4 fixings |
| 016 - 023 | Frame E | 6.8 | 333 | 320 | 6.5 | 125 | 100 | 12.5 | 255 | |
| 032 - 038 | Frame F | 10.0 | 383 | 370 | 6.5 | 150 | 125 | 12.5 | 255 | |
| 045 - 073 | Frame G | 22.3 | 480 | 465 | 7.25 | 220 | 190 | 13.0 | 287 | Slot 5.0 mm wide. Use M5 fixings |
| 087 - 145 | Frame H | 42.8 | 670 | 650 | 10.0 | 260 | 220 | 20.0 | 316 | Slot 6.8 mm wide. Use M6 fixings |
| 180 - 260 | Frame J | 89.0 | 800 | 780 | 10.0 | 330 | 285 | 23.0 | 374 | Slot 9.0 mm wide. Use M8 fixings |
| 315 - 440 | Frame K | 125.0 | 1310 | 1282 | 15.0 | 400 | 280 | 60.0 | 457 | Use M10 fixings |

Commissioning Software

For the commissioning of the AC30V, Parker offers a simple-to-use software tool for programming, monitoring and diagnostics of the AC drives from Parker with the aid

of a graphical user interface. This enables the user to easily create, parameterize and configure user-defined applications.



The AC30V drive can easily be configured and put into operation via graphical key pad or by using the pc software PDQ.

- Select operation mode
- Select the pump via ordering code
- Enter pressure sensor parameters
- Enter motor data provided on the motor rating plate
- Setting of the pressure regulator
- Save/clone the configuration settings via optional SD card is possible

Drive Controlled Pump units consisting of motor and pump are directly ready-for-use since motor and pump parameters are already set ex works.

The following settings for programming functions are possible:

- Accumulator charging mode
- eLCP (electronic load control)
- Analogue setpoint selection for volume flow and/or pressure
- Setpoint selection for volume flow and/or pressure via CANopen/DeviceNet/PROFIBUS DP/PROFINET etc.

The following diagnostics functions are available:

- Current pressure, volume flow and performance values are on constant display
- Reading or setting digital inputs and outputs
- Graphical presentation with zoom and save functions

For more information see catalogue 190-490323

Parker worldwide

Europe, Middle East, Africa

AE – United Arab Emirates, Dubai

Tel: +971 4 8127100
parker.me@parker.com

AT – Austria, Wiener Neustadt
Tel: +43 (0)2622 23501-0
parker.austria@parker.com

AT – Eastern Europe, Wiener Neustadt
Tel: +43 (0)2622 23501 900
parker.easteurope@parker.com

AZ – Azerbaijan, Baku
Tel: +994 50 22 33 458
parker.azerbaijan@parker.com

BE/LU – Belgium, Nivelles
Tel: +32 (0)67 280 900
parker.belgium@parker.com

BG – Bulgaria, Sofia
Tel: +359 2 980 1344
parker.bulgaria@parker.com

BY – Belarus, Minsk
Tel: +48 (0)22 573 24 00
parker.poland@parker.com

CH – Switzerland, Etoy
Tel: +41 (0)21 821 87 00
parker.switzerland@parker.com

CZ – Czech Republic, Klecany
Tel: +420 284 083 111
parker.czechrepublic@parker.com

DE – Germany, Kaarst
Tel: +49 (0)2131 4016 0
parker.germany@parker.com

DK – Denmark, Ballerup
Tel: +45 43 56 04 00
parker.denmark@parker.com

ES – Spain, Madrid
Tel: +34 902 330 001
parker.spain@parker.com

FI – Finland, Vantaa
Tel: +358 (0)20 753 2500
parker.finland@parker.com

FR – France, Contamine s/Arve
Tel: +33 (0)4 50 25 80 25
parker.france@parker.com

GR – Greece, Athens
Tel: +30 210 933 6450
parker.greece@parker.com

HU – Hungary, Budaoers
Tel: +36 23 885 470
parker.hungary@parker.com

IE – Ireland, Dublin
Tel: +353 (0)1 466 6370
parker.ireland@parker.com

IT – Italy, Corsico (MI)
Tel: +39 02 45 19 21
parker.italy@parker.com

KZ – Kazakhstan, Almaty
Tel: +7 7273 561 000
parker.easteurope@parker.com

NL – The Netherlands, Oldenzaal
Tel: +31 (0)541 585 000
parker.nl@parker.com

NO – Norway, Asker
Tel: +47 66 75 34 00
parker.norway@parker.com

PL – Poland, Warsaw
Tel: +48 (0)22 573 24 00
parker.poland@parker.com

PT – Portugal
Tel: +351 22 999 7360
parker.portugal@parker.com

RO – Romania, Bucharest
Tel: +40 21 252 1382
parker.romania@parker.com

RU – Russia, Moscow
Tel: +7 495 645-2156
parker.russia@parker.com

SE – Sweden, Spånga
Tel: +46 (0)8 59 79 50 00
parker.sweden@parker.com

SK – Slovakia, Banská Bystrica
Tel: +421 484 162 252
parker.slovakia@parker.com

SL – Slovenia, Novo Mesto
Tel: +386 7 337 6650
parker.slovenia@parker.com

TR – Turkey, Istanbul
Tel: +90 216 4997081
parker.turkey@parker.com

UA – Ukraine, Kiev
Tel: +48 (0)22 573 24 00
parker.poland@parker.com

UK – United Kingdom, Warwick
Tel: +44 (0)1926 317 878
parker.uk@parker.com

ZA – South Africa, Kempton Park
Tel: +27 (0)11 961 0700
parker.southafrica@parker.com

North America

CA – Canada, Milton, Ontario
Tel: +1 905 693 3000

US – USA, Cleveland
(industrial)
Tel: +1 216 896 3000

US – USA, Elk Grove Village
(mobile)
Tel: +1 847 258 6200

Asia Pacific

AU – Australia, Castle Hill
Tel: +61 (0)2-9634 7777

CN – China, Shanghai
Tel: +86 21 2899 5000

HK – Hong Kong
Tel: +852 2428 8008

ID – Indonesia, Tangerang
Tel: +62 21 7588 1906

IN – India, Mumbai
Tel: +91 22 6513 7081-85

JP – Japan, Fujisawa
Tel: +81 (0)4 6635 3050

KR – South Korea, Seoul
Tel: +82 2 559 0400

MY – Malaysia, Shah Alam
Tel: +60 3 7849 0800

NZ – New Zealand, Mt Wellington
Tel: +64 9 574 1744

SG – Singapore
Tel: +65 6887 6300

TH – Thailand, Bangkok
Tel: +662 186 7000

TW – Taiwan, New Taipei City
Tel: +886 2 2298 8987

VN – Vietnam, Ho Chi Minh City
Tel: +84 8 3999 1600

South America

AR – Argentina, Buenos Aires
Tel: +54 3327 44 4129

BR – Brazil, Cachoeirinha RS
Tel: +55 51 3470 9144

CL – Chile, Santiago
Tel: +56 2 623 1216

MX – Mexico, Toluca
Tel: +52 72 2275 4200

EMEA Product Information Centre

Free phone: 00 800 27 27 5374

(from AT, BE, CH, CZ, DE, DK, EE, ES, FI, FR, IE, IL, IS, IT, LU, MT, NL, NO, PL, PT, RU, SE, SK, UK, ZA)

US Product Information Centre

Toll-free number: 1-800-27 27 537

www.parker.com

