

**General Description**

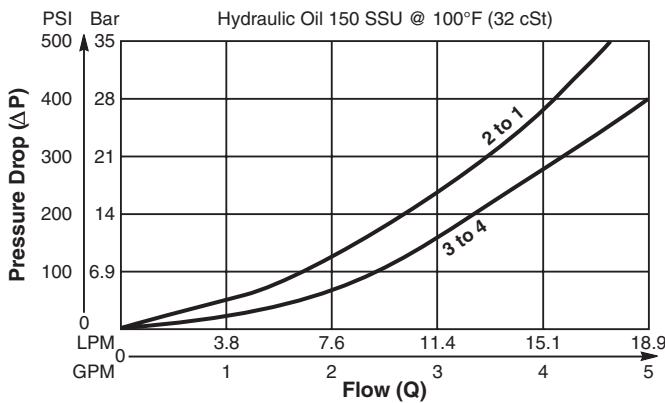
Cartridge Style Dual Pilot Operated Check Valve. For additional information see Technical Tips on pages CV1-CV4.

**Features**

- Hardened, precision ground parts for durability
- Cost effective-replaces two cartridges
- Internal pilot position
- Common cavity
- All external parts zinc plated

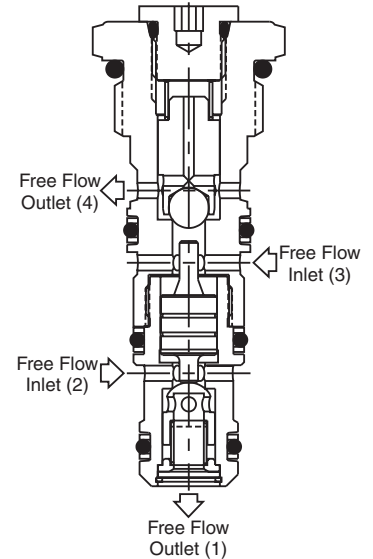
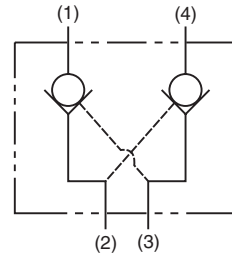
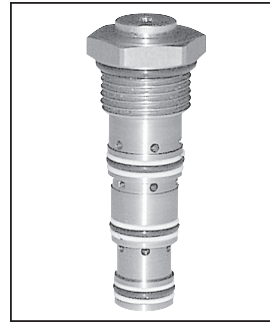
**Performance Curve**

**Pressure Drop vs. Flow (Through cartridge only)**

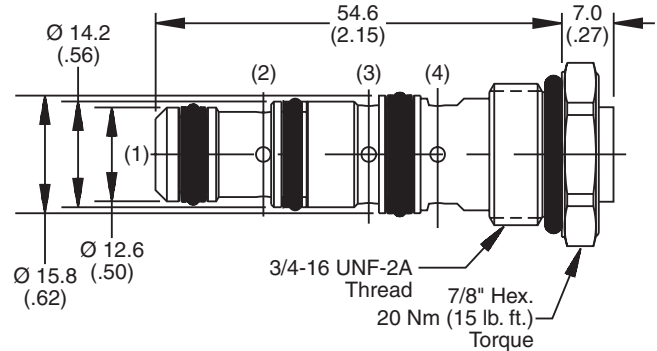


**Specifications**

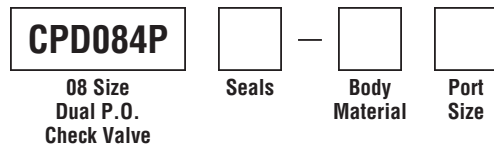
<b>Rated Flow</b>	19 LPM (5 GPM)
<b>Maximum Inlet Pressure</b>	207 Bar (3000 PSI)
<b>Leakage at 150 SSU (32 cSt)</b>	5 drops/min. (.33 cc/min.) at 207 Bar (3000 PSI)
<b>Pilot Ratio</b>	3:1
<b>Cartridge Material</b>	All parts steel. All operating parts hardened steel.
<b>Operating Temp. Range/Seals</b>	-40°C to +93.3°C (Nitrile) (-40°F to +200°F) -31.7°C to +121.1°C (Fluorocarbon) (-25°F to +250°F)
<b>Fluid Compatibility/Viscosity</b>	Mineral-based or synthetic with lubricating properties at viscosities of 45 to 2000 SSU (6 to 420 cSt)
<b>Filtration</b>	ISO code 16/13, SAE Class 4 or better
<b>Approx. Weight</b>	.05 kg (.11 lbs.)
<b>Cavity</b>	C08-4 (See BC Section for more details)
<b>Form Tool</b>	Rougher NFT08-4R Finisher NFT08-4F



**Dimensions** Millimeters (Inches)



**Ordering Information**



Code	Seals / Kit No.
Omit	Nitrile / (SK08-4N)
V	Fluorocarbon / (SK08-4V)

Code	Body Material
Omit	Steel
A	Aluminum

Code	Port Size	Body Part No.
Omit	Cartridge Only	
4T	SAE-4	(B08-4-*4T)
6T	SAE-6	(B08-4-*6T)
6B	3/8" BSPG	(B08-4-*6B)

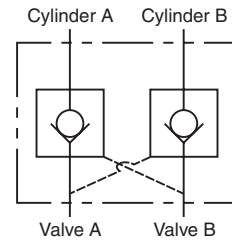
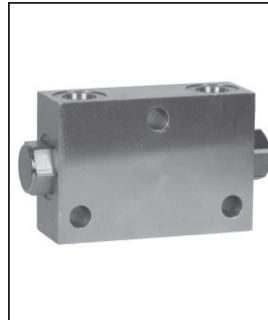
\* Add "A" for aluminum, omit for steel.

**Technical Information**

- CV Check Valves
- SH Shuttle Valves
- LM Load/Motor Controls
- FC Flow Controls
- PC Pressure Controls
- LE Logic Elements
- DC Directional Controls
- MV Manual Valves
- SV Solenoid Valves
- PV Proportional Valves
- CE Coils & Electronics
- BC Bodies & Cavities
- TD Technical Data

**General Description**

Pilot Piston Style Dual Pilot Operated Check Valve. For additional information see Technical Tips on pages CV1-CV4.

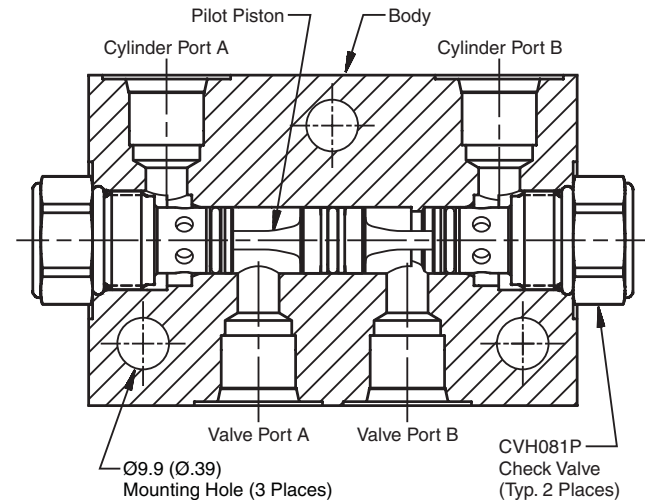


**Features**

- Spherical poppet for low leakage
- “D”-Ring eliminates back-up rings
- Optional sealed pilot piston

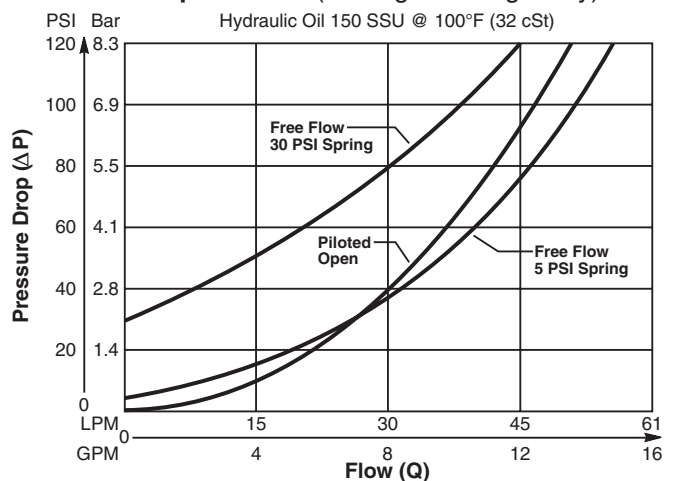
**Specifications**

<b>Maximum Flow</b>	56 LPM (15 GPM)
<b>Maximum Inlet Pressure</b>	210 Bar (3000 PSI) - CDP081 350 Bar (5000 PSI) - CDPH081
<b>Leakage Across Check 150 SSU (32 cSt)</b>	2 drops/min. (.13 cc/min.)
<b>Leakage Across Pilot Piston (No Seals)</b>	312 cc/min 0.3 LPM (.08 GPM)
<b>Pilot Ratio</b>	4:1
<b>Pilot Piston Part Numbers</b>	No Seal - 718238 Nitrile Seal - 718238N Fluorocarbon Seal - 718238V
<b>Cartridge Material</b>	All parts steel. All operating parts hardened steel.
<b>Body Material</b>	Aluminum - CDP081 Steel - CDPH081
<b>Operating Temp. Range (Ambient)</b>	-45°C to +93.3°C (“D”-Ring) (-50°F to +200°F) -31.7°C to +121.1°C (Fluorocarbon) (-25°F to +250°F)
<b>Filtration</b>	ISO code 16/13, SAE Class 4 or better
<b>Fluids</b>	Mineral-based or synthetic with lubricating properties at viscosities of 45 to 2000 SSU (6 to 420 cSt)
<b>Approx. Weight</b>	

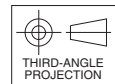
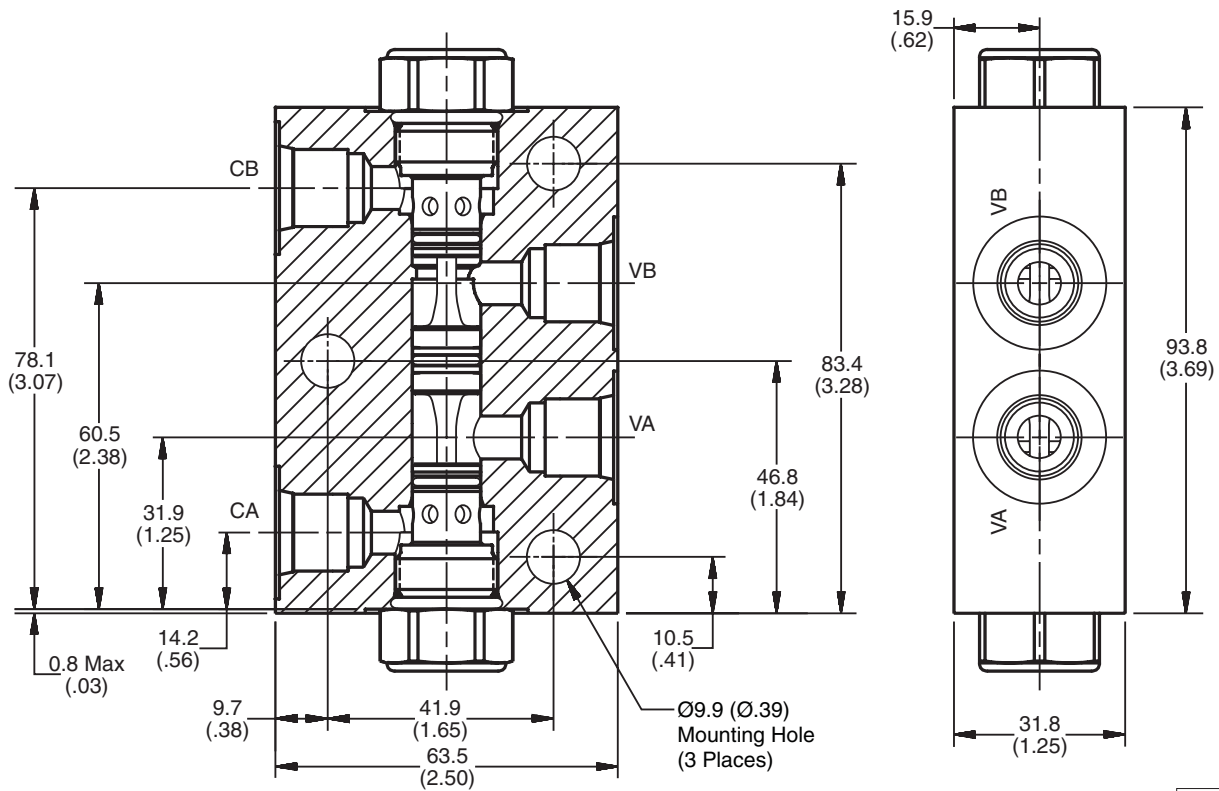


**Performance Curve**

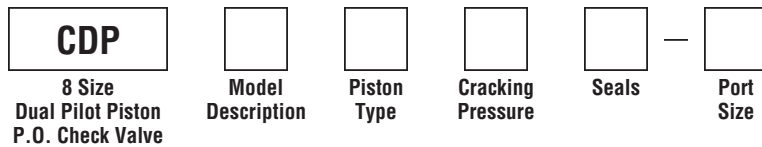
**Pressure Drop vs. Flow (Through cartridge only)**



**Dimensions** Millimeters (Inches)



**Ordering Information**



Code	Model Description
081	3000 PSI Series
H081	5000 PSI Series

Code	Cracking Pressure
*Omit	0.3 Bar (5 PSI)
10	0.7 Bar (10 PSI)
30	2.1 Bar (30 PSI)
65	4.5 Bar (65 PSI)
100	6.9 Bar (100 PSI)
150	10.4 Bar (150 PSI)

Code	Seals / Kit No.
Omit	"D"-Ring / (SK08-2)
N	Nitrile / (SK08-2N)
V	Fluorocarbon / (SK08-2V)

Code	Port Size	Material
Omit	Cartridge Only	
A6T	SAE-6	Aluminum (CDP081 Only)
6T	SAE-6	Steel (CDPH081 Only)

Code	Piston Type
P	Pilot Piston without seal
A	Pilot Piston with seal Note: Requires 1.4 Bar (20 PSI) crack minimum.

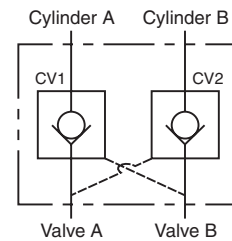
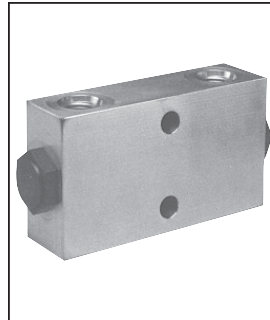
\*Not available with "A" option.

**Technical Information**

- CV Check Valves
- SH Shuttle Valves
- LM Load/Motor Controls
- FC Flow Controls
- PC Pressure Controls
- LE Logic Elements
- DC Directional Controls
- MV Manual Valves
- SV Solenoid Valves
- PV Proportional Valves
- CE Coils & Electronics
- BC Bodies & Cavities
- TD Technical Data

**General Description**

Pilot Piston Style Dual Pilot Operated Check Valve. For additional information see Technical Tips on pages CV1-CV4.

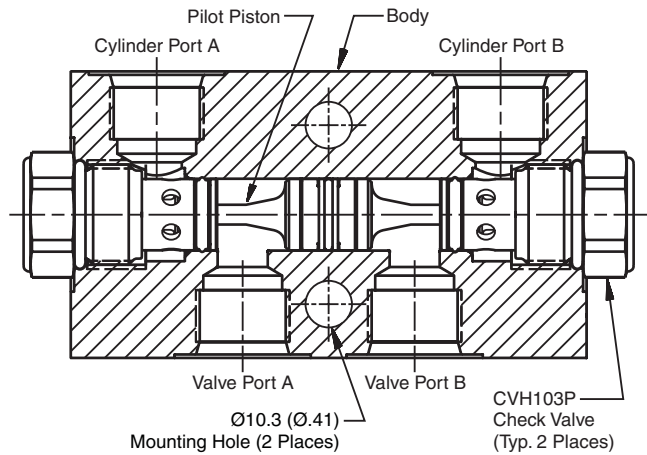


**Features**

- Spherical poppet for low leakage
- "D"-Ring eliminates back-up rings
- Optional sealed pilot piston

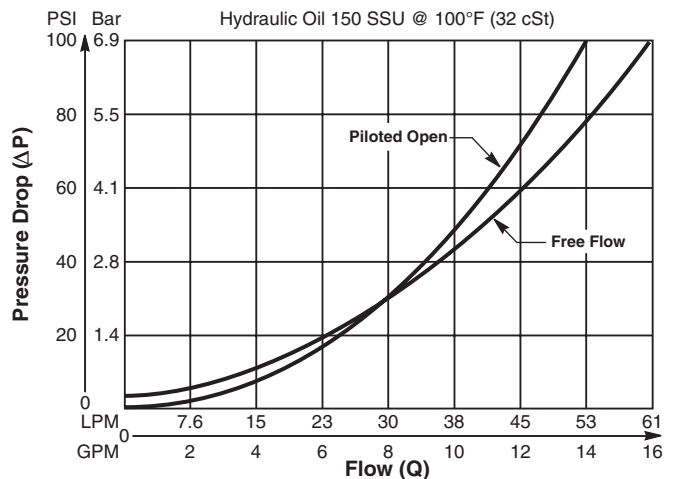
**Specifications**

<b>Maximum Flow</b>	56 LPM (15 GPM)
<b>Maximum Inlet Pressure</b>	210 Bar (3000 PSI) - CDP103 350 Bar (5000 PSI) - CDPH103
<b>Leakage Across Check 150 SSU (32 cSt)</b>	2 drops/min. (.13 cc/min.)
<b>Leakage Across Pilot Piston (No Seals)</b>	312 cc/min 0.3 LPM (.08 GPM)
<b>Pilot Ratio</b>	4:1
<b>Pilot Piston Part Numbers</b>	No Seal - 717917 Nitrile Seal - 717917N Fluorocarbon Seal - 717917V
<b>Cartridge Material</b>	All parts steel. All operating parts hardened steel.
<b>Body Material</b>	Aluminum - CDP103 Steel - CDPH103
<b>Operating Temp. Range (Ambient)</b>	-45°C to +93.3°C ("D"-Ring) (-50°F to +200°F) -31.7°C to +121.1°C (Fluorocarbon) (-25°F to +250°F)
<b>Filtration</b>	ISO code 16/13, SAE Class 4 or better
<b>Fluids</b>	Mineral-based or synthetic with lubricating properties at viscosities of 45 to 2000 SSU (6 to 420 cSt)
<b>Approx. Weight</b>	



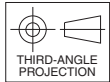
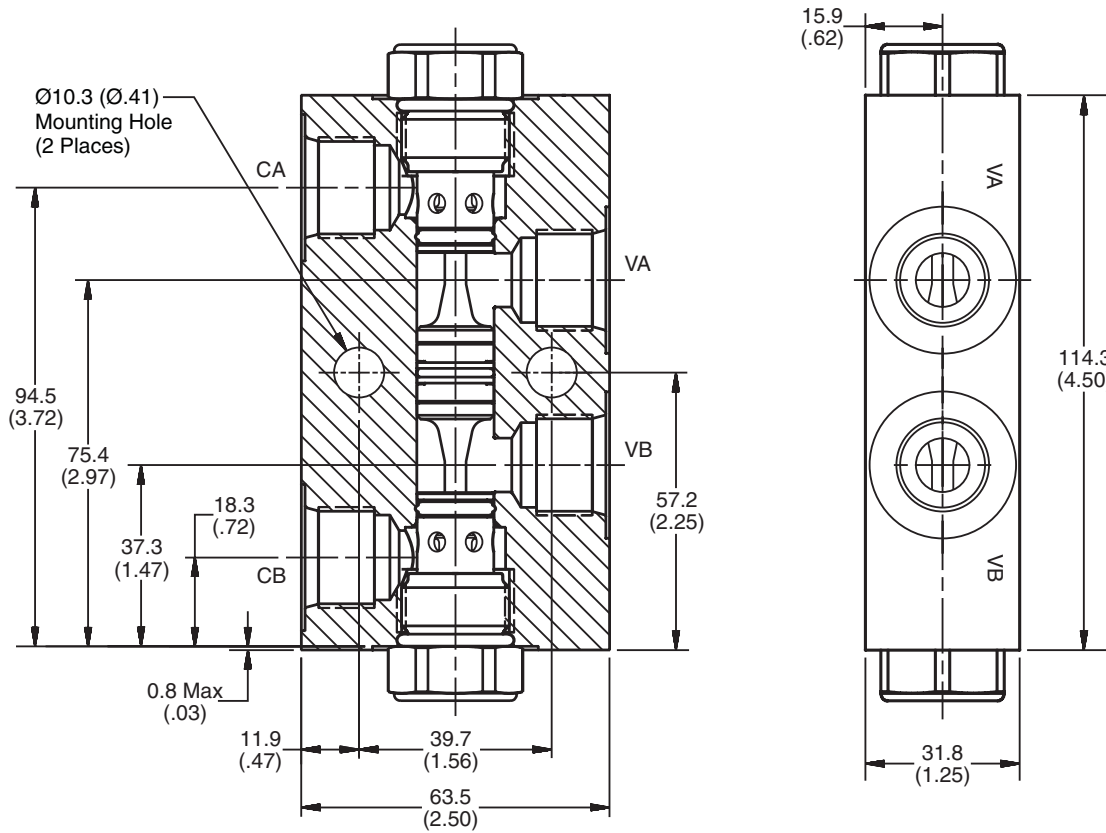
**Performance Curve**

Pressure Drop vs. Flow (Through cartridge only)

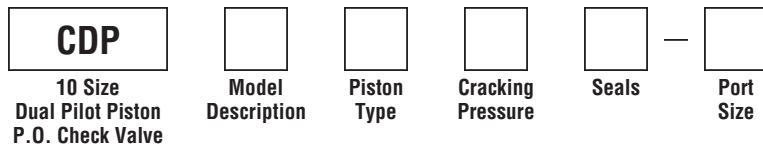


Technical Information

Dimensions Millimeters (Inches)



Ordering Information



Code	Model Description
103	3000 PSI Series
H103	5000 PSI Series

Code	Cracking Pressure
*Omit	0.3 Bar (5 PSI)
20	1.4 Bar (20 PSI)
50	3.5 Bar (50 PSI)
65	4.5 Bar (65 PSI)
80	5.5 Bar (80 PSI)
100	6.9 Bar (100 PSI)

Code	Seals / Kit No.
Omit	"D"-Ring / (SK10-2)
N	Nitrile / (SK10-2N)
V	Fluorocarbon / (SK10-2V)

Code	Port Size	Material
Omit	Cartridge Only	
A8T	SAE-8	Aluminum (CDP103 Only)
8T	SAE-8	Steel (CDPH103 Only)

Code	Piston Type
P	Pilot Piston without seal
A	Pilot Piston with seal Note: Requires 1.4 Bar (20 PSI) crack minimum.

\*Not available with "A" option.

**Technical Information**

CV

Check Valves

SH

Shuttle Valves

LM

Load/Motor Controls

FC

Flow Controls

PC

Pressure Controls

LE

Logic Elements

DC

Directional Controls

MV

Manual Valves

SV

Solenoid Valves

PV

Proportional Valves

CE

Coils & Electronics

BC

Bodies & Cavities

TD

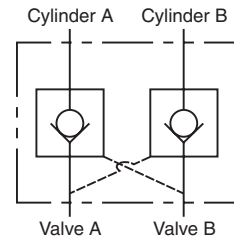
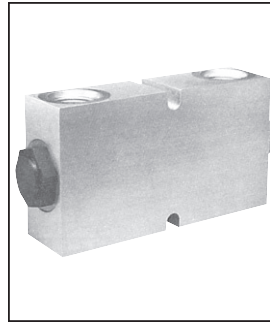
Technical Data

**General Description**

Pilot Piston Style Dual Pilot Operated Check Valve. For additional information see Technical Tips on pages CV1-CV4.

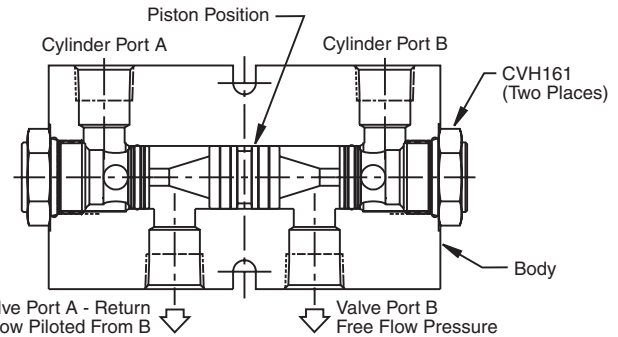
**Features**

- Hardened precision ground parts for durability
- Optional sealed pilot piston



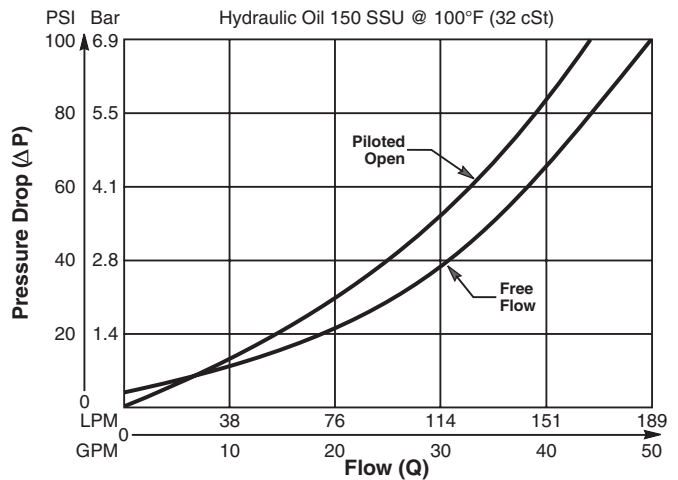
**Specifications**

<b>Maximum Flow</b>	187 LPM (50 GPM)
<b>Maximum Inlet Pressure</b>	210 Bar (3000 PSI) - CDP161 350 Bar (5000 PSI) - CDPH161
<b>Leakage at 150 SSU (32 cSt)</b>	5 drops/min (.33 cc/min) @ 350 Bar (5000 psi)
<b>Leakage Across Pilot Piston (No Seals)</b>	312 cc/min 0.3 LPM (.08 GPM)
<b>Pilot Ratio</b>	3:1
<b>Pilot Piston Part Numbers</b>	No Seal - 717918 Nitrile Seal - 717918N Fluorocarbon - 717918V
<b>Cartridge Material</b>	All parts steel. All operating parts hardened steel.
<b>Body Material</b>	Aluminum - CDP161 Steel - CDPH161
<b>Operating Temp. Range (Ambient)</b>	-40°C to +93.3°C (Nitrile) (-40°F to +200°F) -31.7°C to +121.1°C (Fluorocarbon) (-25°F to +250°F)
<b>Filtration</b>	ISO code 16/13, SAE Class 4 or better
<b>Fluids</b>	Mineral-based or synthetic with lubricating properties at viscosities of 45 to 2000 SSU (6 to 420 cSt)
<b>Approx. Weight</b>	



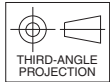
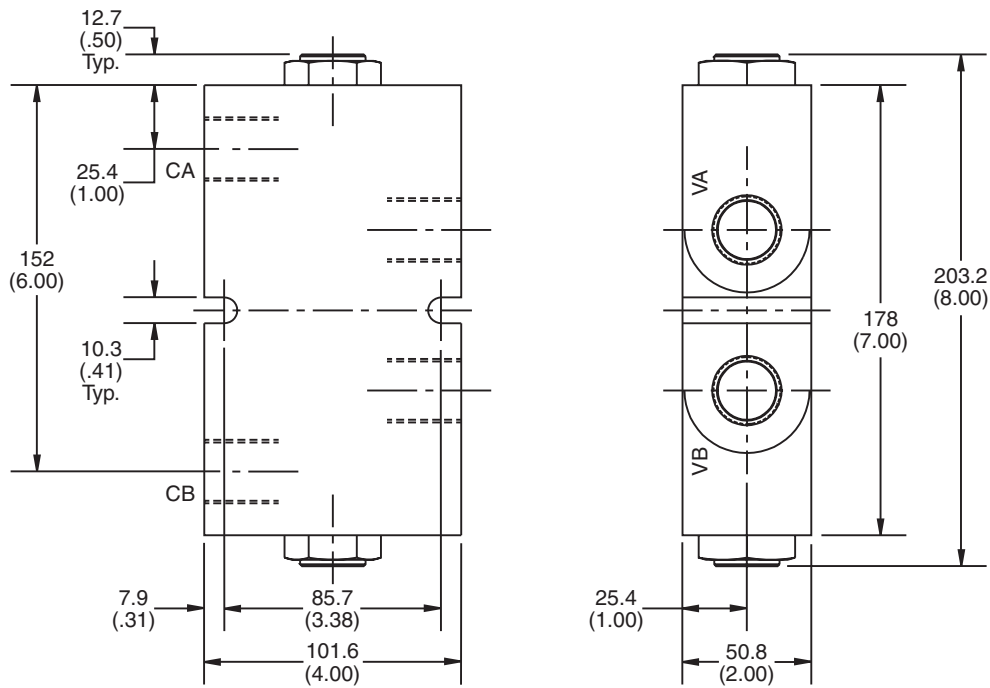
**Performance Curve**

Pressure Drop vs. Flow (Through cartridge only)

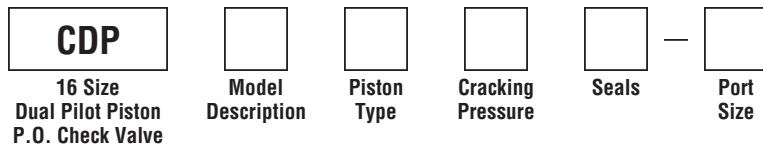


**Technical Information**

**Dimensions** Millimeters (Inches)



**Ordering Information**



Code	Model Description
161	3000 PSI Series
H161	5000 PSI Series

Code	Cracking Pressure
*Omit	0.3 Bar (5 PSI)
20	1.4 Bar (20 PSI)
65	4.5 Bar (65 PSI)
175	12.1 Bar (175 PSI)

Code	Seals / Kit No.
Omit	Nitrile / (SK16-2N)
V	Fluorocarbon / (SK16-2V)

Code	Port Size	Material
Omit	Cartridge Only	
A16T	SAE-16	Aluminum (CDP161 Only)
16T	SAE-16	Steel (CDPH161 Only)

Code	Piston Type
P	Pilot Piston without seal
A	Pilot Piston with seal Note: Requires 1.4 Bar (20 PSI) crack minimum.

\*Not available with "A" option.

- CV  
Check Valves
- SH  
Shuttle Valves
- LM  
Load/Motor Controls
- FC  
Flow Controls
- PC  
Pressure Controls
- LE  
Logic Elements
- DC  
Directional Controls
- MV  
Manual Valves
- SV  
Solenoid Valves
- PV  
Proportional Valves
- CE  
Coils & Electronics
- BC  
Bodies & Cavities
- TD  
Technical Data