

Technical Information

- CV Check Valves
- SH Shuttle Valves
- LM Load/Motor Controls
- FC Flow Controls
- PC Pressure Controls
- LE Logic Elements
- DC Directional Controls
- MV Manual Valves
- SV Solenoid Valves
- PV Proportional Valves
- CE Coils & Electronics
- BC Bodies & Cavities
- TD Technical Data

General Description

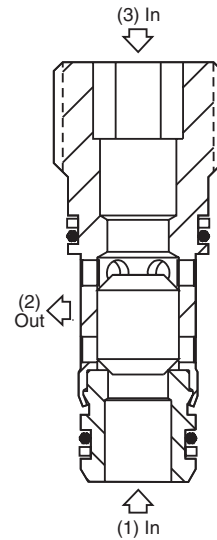
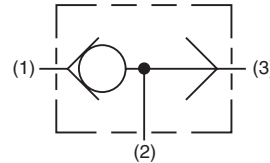
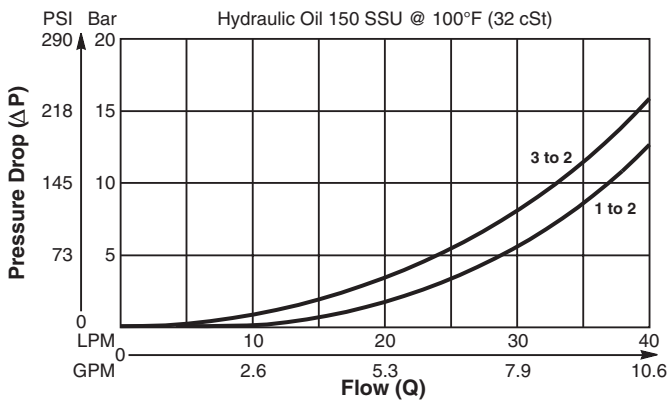
Poppet Type, Two Position, Three Way Shuttle Valve. For additional information see Technical Tips on pages SH1-SH2.

Features

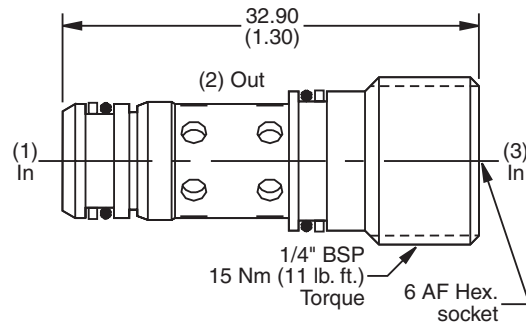
- High flow capacity
- Compact cost effective design
- Poppet type construction for minimal leakage
- Contamination tolerant
- All external parts zinc plated

Performance Curve

Pressure Drop vs. Flow (Through cartridge only)



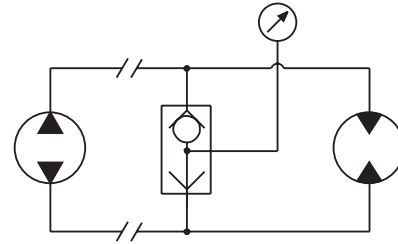
Dimensions Millimeters (Inches)



Specifications

| | |
|---------------------------------------|--|
| Rated Flow | 38 LPM (10 GPM) |
| Nominal Flow @ 7 Bar (100 PSI) | 28 LPM (7.4 GPM) |
| Maximum Inlet Pressure | 350 Bar (5000 PSI) |
| Cartridge Material | Steel operating parts, hardened steel poppet. |
| Operating Temp. Range/Seals | -40°C to +93.3°C (Nitrile, Buna-N) (-40°F to +200°F) -31.7°C to +121.1°C (Fluorocarbon) (-25°F to +250°F) |
| Fluid Compatibility/Viscosity | Mineral-based or synthetic with lubricating properties at viscosities of 45 to 2000 SSU (6 to 420 cSt) |
| Filtration | ISO code 16/13, SAE Class 4 or better |
| Approx. Weight | .02 kg (.04 lbs.) |
| Cavity | 3Z (See BC Section for more details) |

Application



Selects highest pressure from either line.

Ordering Information

K2A005 Shuttle Valve Seals

| Code | Seals / Kit No. |
|------|--------------------------------|
| N | Nitrile, Buna-N / (SK30091N-1) |
| V | Fluorocarbon / (SK30091V-1) |

Order Bodies Separately

LB10

Line Body Porting Body Material

| Code | Porting |
|------|----------|
| 313 | 1/4" BSP |
| 320 | 1/4" SAE |

| Code | Body Material |
|------|---------------|
| A | Aluminum |
| S | Steel |



General Description

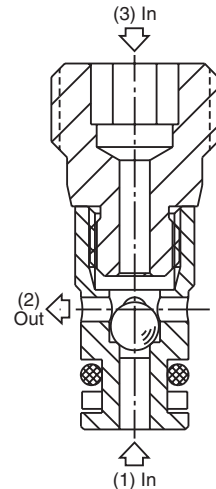
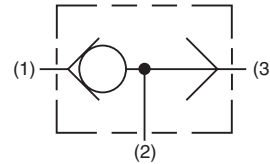
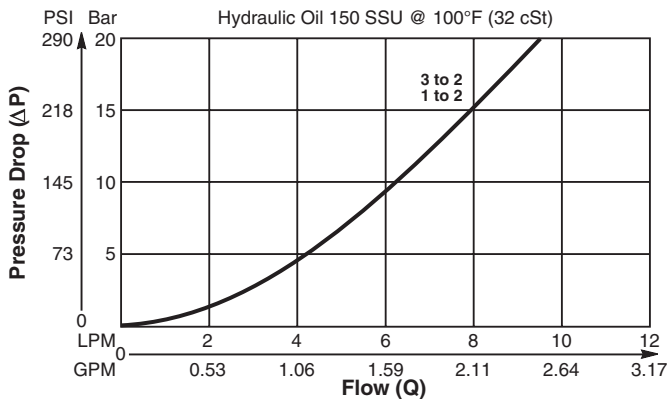
Ball Type, Two Position, Three Way Shuttle Valve.
For additional information see Technical Tips on pages SH1-SH2.

Features

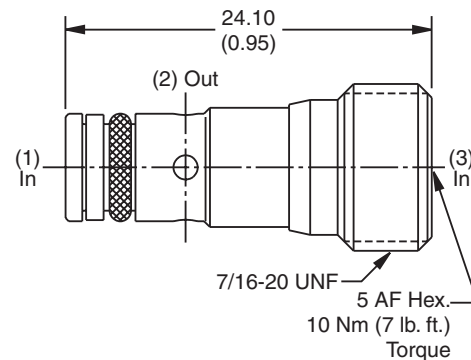
- Compact, cost effective design
- Ball type construction for maximum durability
- Minimal leakage - less than 3 drops/min.
- Contamination tolerant
- Hardened working parts for maximum durability
- All external parts zinc plated

Performance Curve

Pressure Drop vs. Flow (Through cartridge only)



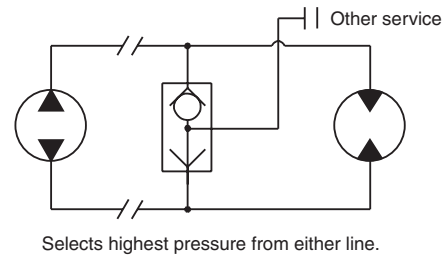
Dimensions Millimeters (Inches)



Specifications

| | |
|---------------------------------------|--|
| Rated Flow | 9.5 LPM (2.5 GPM) |
| Nominal Flow @ 7 Bar (100 PSI) | 5 LPM (1.32 GPM) |
| Maximum Inlet Pressure | 420 Bar (6000 PSI) |
| Cartridge Material | All parts steel. All operating parts hardened steel. |
| Operating Temp. Range/Seals | -40°C to +93.3°C (Nitrile, Buna-N) (-40°F to +200°F) -31.7°C to +121.1°C (Fluorocarbon) (-25°F to +250°F) |
| Fluid Compatibility/Viscosity | Mineral-based or synthetic with lubricating properties at viscosities of 45 to 2000 SSU (6 to 420 cSt) |
| Filtration | ISO code 16/13, SAE Class 4 or better |
| Approx. Weight | .01 kg (.02 lbs.) |
| Cavity | CAVSW-3 (See BC Section for more details) |

Application



Ordering Information

KSWA3 Shuttle Valve

Seals

Order Bodies Separately

LB10 Line Body Porting Body Material

| Code | Seals / Kit No. |
|------|--------------------------------|
| N | Nitrile, Buna-N / (SK30523N-1) |
| V | Fluorocarbon / (SK30523V-1) |

| Code | Porting |
|------|----------|
| 815 | 1/4" SAE |
| 816 | 1/4" BSP |

| Code | Body Material |
|------|---------------|
| A | Aluminum |
| S | Steel |

- CV** Check Valves
- SH** Shuttle Valves
- LM** Load/Motor Controls
- FC** Flow Controls
- PC** Pressure Controls
- LE** Logic Elements
- DC** Directional Controls
- MV** Manual Valves
- SV** Solenoid Valves
- PV** Proportional Valves
- CE** Coils & Electronics
- BC** Bodies & Cavities
- TD** Technical Data