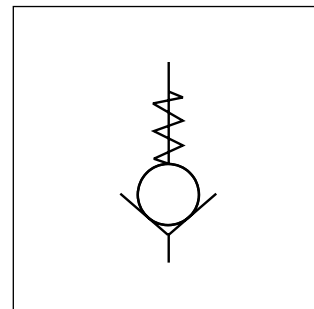


Characteristics / Ordering Code

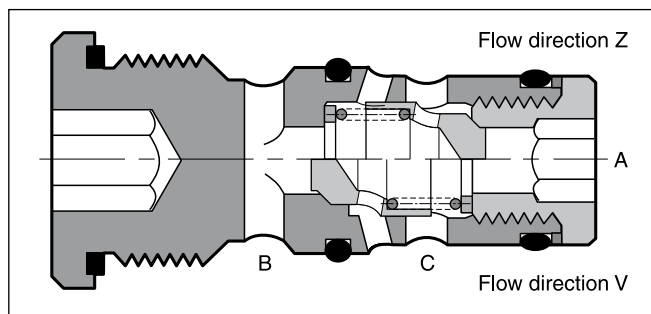
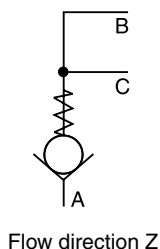
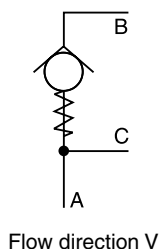
The check valve series SPV and SPZ are designed as threaded cartridge valves. All parts are assembled in one unit and easy to mount.

Features

- Little space required
- Leak-free
- Easy assembly



Ports



Ordering code

 — **SP** **B** **030** **E** **M**

Seal

Code	Seal
omit	NBR
V	FPM

Check valve

Flow direction

Code	Flow direction
V	Port B → A and C
Z	Port A → B and C

Design series

Factory norm, direct operated

Threaded cartridge

Valve size

Code	Size
06	NG06
10	NG10

Spring 0.3 bar

Bold letters =
Short-term availability

Technical data

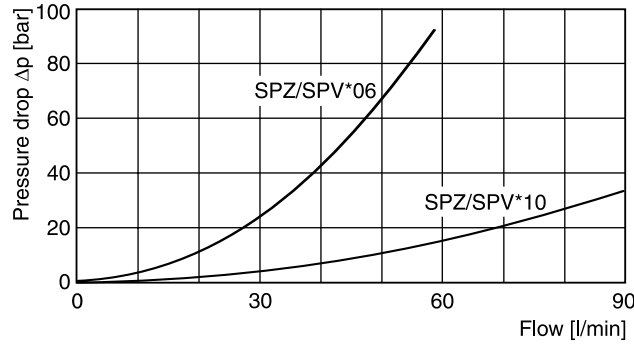
General	
Design	Threaded cartridge valve
Nominal size	NG06 NG10
Mounting position	Unrestricted
Ambient temperature	[°C] -40 ... +60
Weight	[kg] 0.5 0.8
Hydraulic	
Flow direction	See symbols
Fluid	Hydraulic oil according to DIN 51524...51525
Viscosity, permitted	[cSt] / [mm²/s] 20 ... 380
recommended	[cSt] / [mm²/s] 30 ... 80
Fluid temperature	[°C] -20 ... +60
Filtration	ISO 4406 (1999); 18/16/13
Nominal pressure	[bar] 350
Opening pressure	[bar] 0.3
Flow	[l/min] 40 60

SPV-SPZ UK.INDD CM 06.06.14



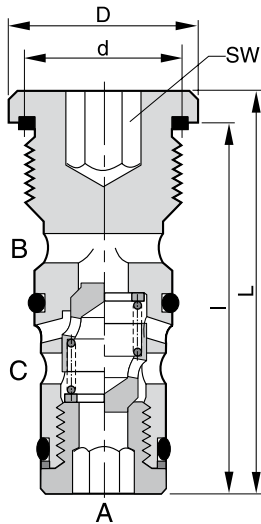
Performance Curves / Dimensions

$\Delta p/Q$ performance curve



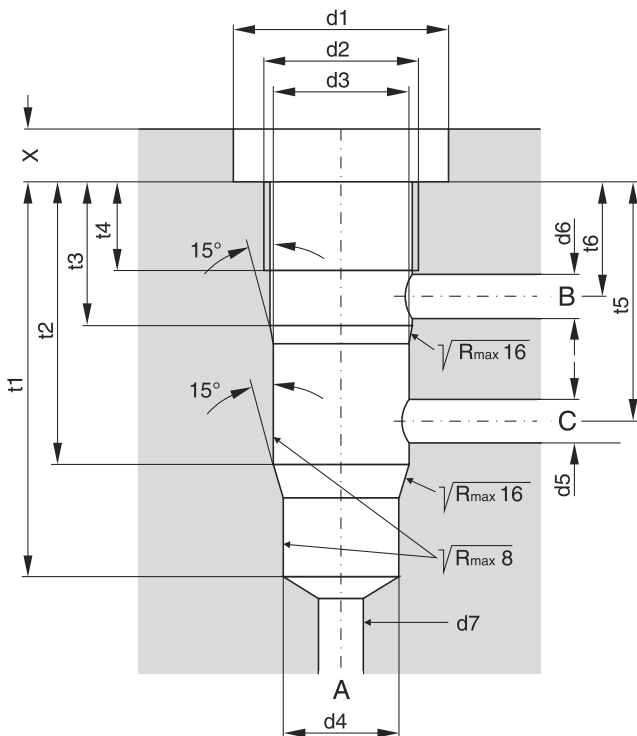
Characteristic curves measured with HLP46 at 50 °C.

Dimensions



Dimensions	NG06	NG10
D	23	29
L	48	70
d	M18x1.5	M24x1.5
l	42.5	64
SW	8	12
Tightening torque ¹⁾ [Nm] ± 15 %	40	65

Mounting cavity



Dimensions	NG06	NG10
d1	25	35
d2	M18 x 1.5	M24 x 1.5
d3 ^{H7}	16	22
d4 ^{H7}	14	20
d5 _{max.}	6	9
d6 _{max.}	6	9
d7 _{max.}	13.5	19.5
t1	45	68
t2	32	51
t3	16	20
t4	10	15
t5	27.5	40
t6	12	14.5
X	6	7

Seal kits

NG	NBR seals	FPM seals
06	SK-SPV/ZB0E06	SK-SPV/ZB0E06V
10	SK-SPV/ZB0E10	SK-SPV/ZB0E10V

¹⁾ Please note the material specification for tightening torque in chapter 12, "accessories"