

**Characteristics / Ordering Code**

Throttle check valves series ZRD are designed for maximum flow rates.

The throttle check function can be located in port A or B as well as in A + B. Meter-in or meter-out functionality can be selected by model code.

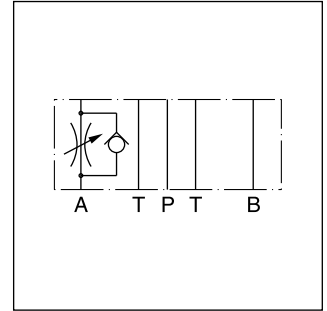
A low flow / high resolution version in NG06 for sensitive shifting time adjustment of pilot operated directional control valves is available on request.

**Features**

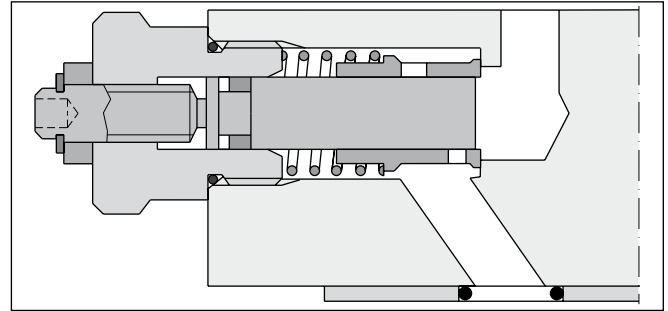
- High flow capacity
- Various functional arrangements
- ZRD01 - NG06 (CETOP 03)
- ZRD02 - NG10 (CETOP 05)



ZRD-ABZ01

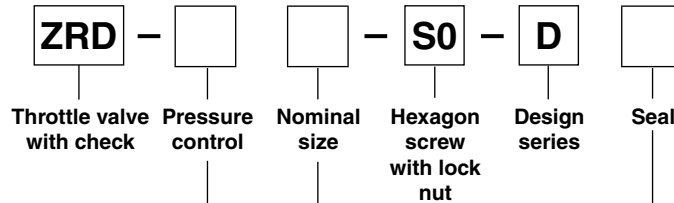


ZRD-AA02



ZRD-AA02

**Ordering code**



Code	Pressure control
AA	Meter-out control in A
AZ	Meter-in control in A
BA	Meter-out control in B
BZ	Meter-in control in B
ABA	Meter-out control in A and B
ABZ	Meter-in control in A and B

Code	Seal
1	NBR
5	FPM

Code	Nominal size
01	NG06
02	NG10

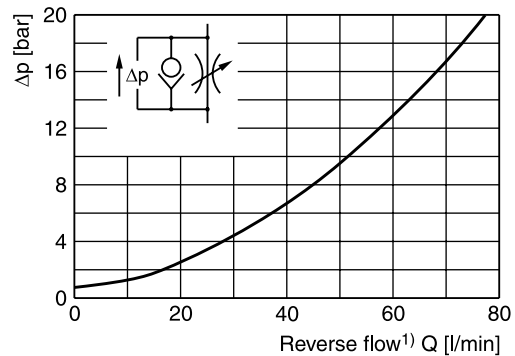
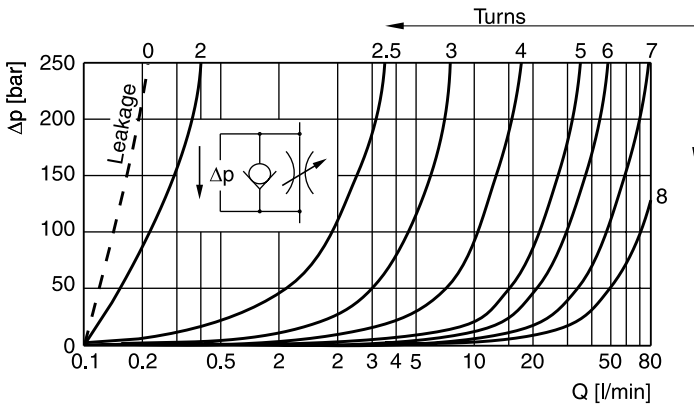
Ordering code details see end of chapter.

**Technical data**

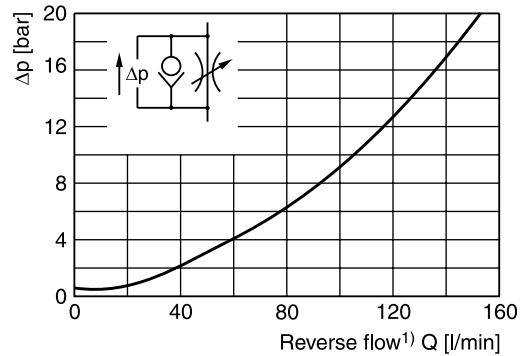
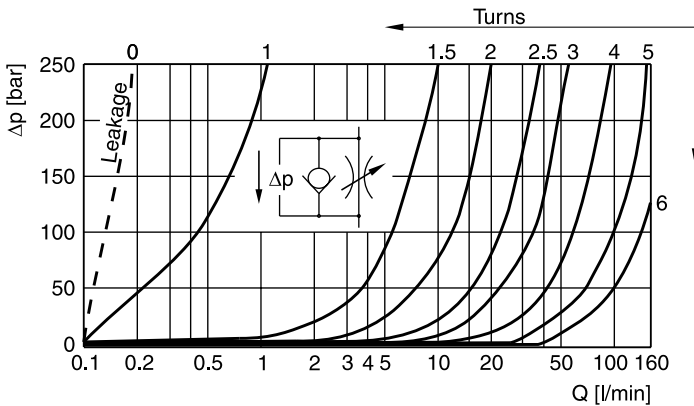
General			
Size		<b>NG06</b>	<b>NG10</b>
Mounting interface		DIN 24340 A6 ISO 4401 NFFPA D03	DIN 24340 A10 ISO 4401 NFFPA D05
		CETOP RP 121	
Mounting position		unrestricted	
Ambient temperature	[°C]	-20...+60	
MTTF <sub>D</sub> value	[years]	150	
Weight	1 cartridge [kg]	1.2	2.8
	2 cartridges [kg]	1.3	2.9
Hydraulic			
Max. operating pressure	[bar]	350	315
Nominal flow	[cSt] / [l/min]	80	160
Leakage	[cSt] / [l/min]	0.1...0.2 (at closed throttle)	0.1...0.2 (at closed throttle)
Opening pressure	[bar]	0.7	0.7
Fluid		Hydraulic oil according to DIN 51524	
Fluid temperature	[°C]	-20...+70 (NBR: -25...+70)	
Viscosity, permitted	[cSt] / [mm <sup>2</sup> /s]	20 ... 400	
Viscosity, recommended	[cSt] / [mm <sup>2</sup> /s]	30 ... 80	
Filtration		ISO 4406 (1999); 18/16/13	

**p/Q performance curves**

**ZRD\*01**



**ZRD\*02**

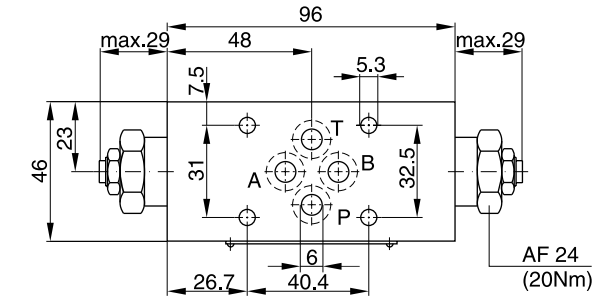


<sup>1)</sup> Throttle closed.

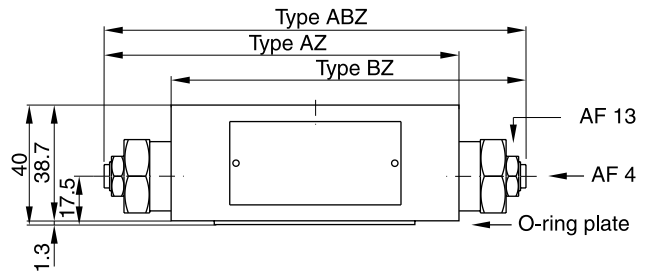
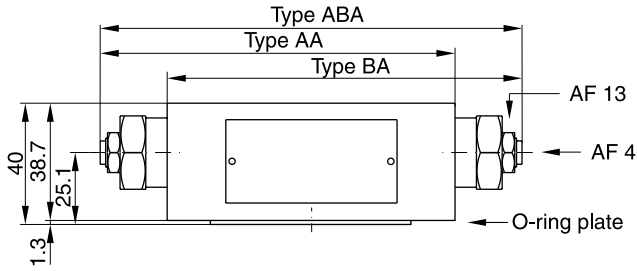
All characteristic curves measured with HLP46 at 50 °C.

**Dimensions**

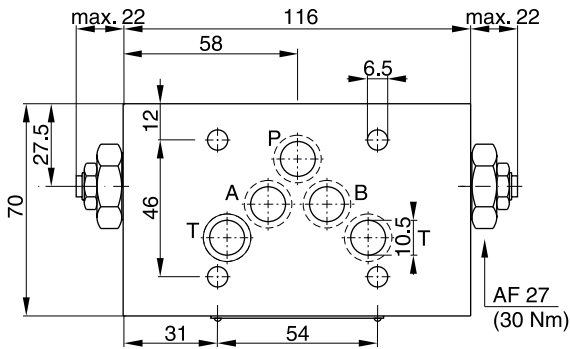
**ZRD\*01**



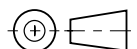
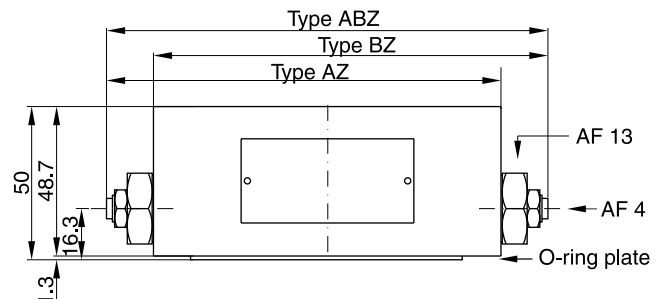
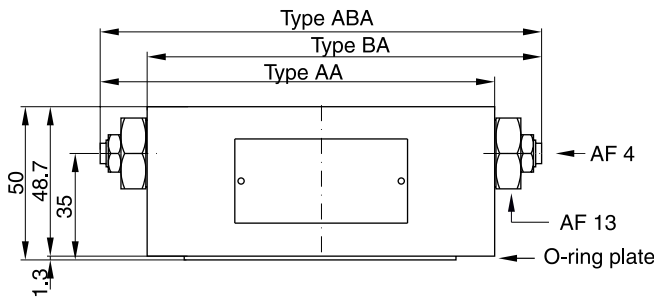
Seal kit	
Seal	Order code
1	098-91096-0
5	098-91097-0
Complete cartridge	
Order code 098-91119-0	
O-ring plate	
Order code S26-27553-0	



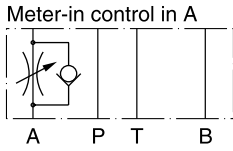
**ZRD\*02**



Seal kit	
Seal	Order code
1	098-91098-0
5	098-91099-0
Complete cartridge	
Order code 098-91120-0	
O-ring plate	
Order code S16-85742-0	

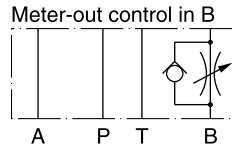


**ZRD\*01**



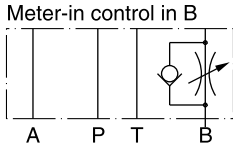
Series  
 ZRD-AZ01-S0-D1

Order No.  
 098-91056-0



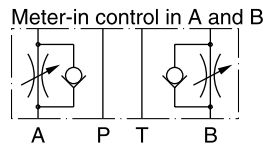
Series  
 ZRD-BA01-S0-D1

Order No.  
 098-91013-0



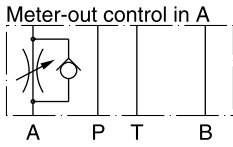
Series  
 ZRD-BZ01-S0-D1

Order No.  
 098-91057-0



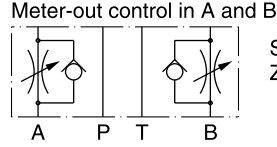
Series  
 ZRD-ABZ01-S0-D1

Order No.  
 098-91058-0



Series  
 ZRD-AA01-S0-D1

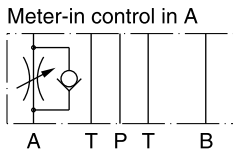
Order No.  
 098-91012-0



Series  
 ZRD-ABA01-S0-D1

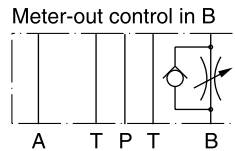
Order No.  
 098-91014-0

**ZRD\*02**



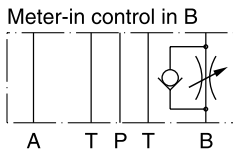
Series  
 ZRD-AZ02-S0-D1

Order No.  
 098-91059-0



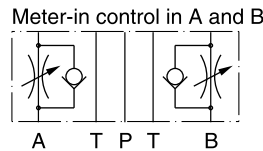
Series  
 ZRD-BA02-S0-D1

Order no.  
 098-91016-0



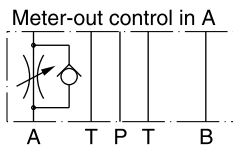
Series  
 ZRD-BZ02-S0-D1

Order No.  
 098-91060-0



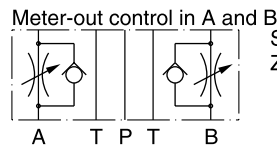
Series  
 ZRD-ABZ02-S0-D1

Order no.  
 098-91061-0



Series  
 ZRD-AA02-S0-D1

Order no.  
 098-91015-0



Series  
 ZRD-ABA02-S0-D1

Order no.  
 098-91017-0

7