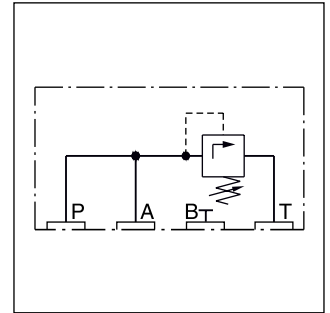
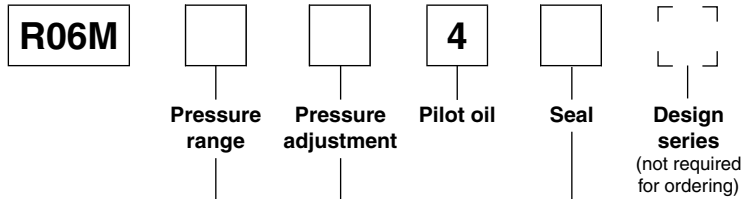


**Pilot valve with pressure relief function R06M**, sub-plate mounting NG06, see combination examples. MTTF<sub>D</sub> value 150 years, flow rate maximum 5 l/min.



**Ordering code**



Code	Pressure range [bar]
10	105
17	175
21	210
25	250
35	350

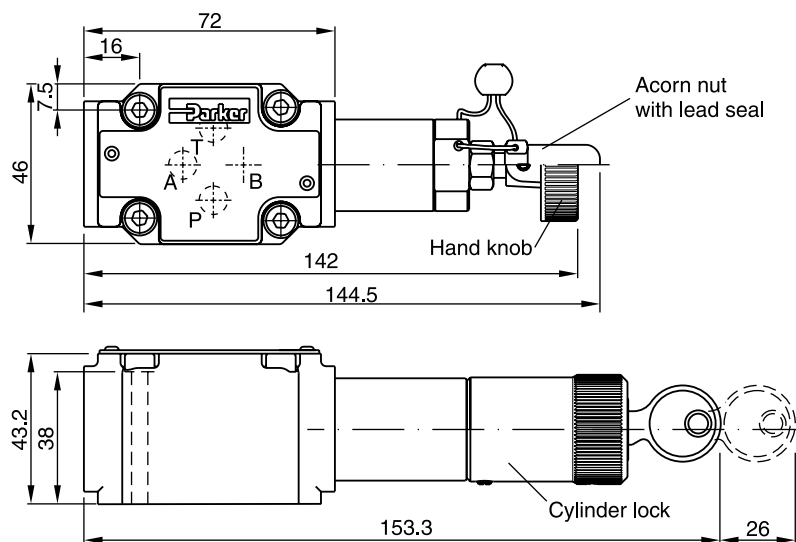
Code	Seal
N	NBR
V	FPM

Code	Adjustment
S	<b>Hand knob (standard)</b>
A	Acorn nut with lead seal
L	Cylinder lock

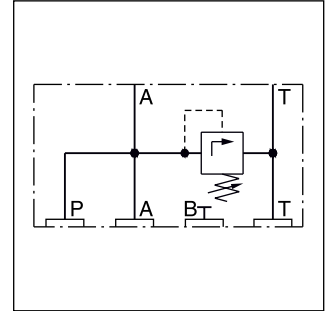
**Bold letters = Short-term availability**

**8**

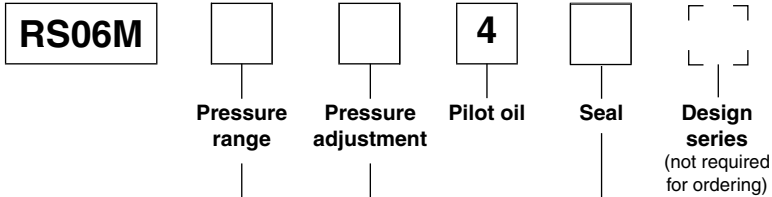
**Dimensions**



**Pilot valve with pressure relief function RS06M**, sandwich plate mounting NG06, see combination examples. MTTF<sub>D</sub> value 150 years, flow rate maximum 5 l/min.



**Ordering code**



Code	Pressure range [bar]
<b>10</b>	<b>105</b>
<b>17</b>	<b>175</b>
<b>21</b>	<b>210</b>
<b>25</b>	<b>250</b>
<b>35</b>	<b>350</b>

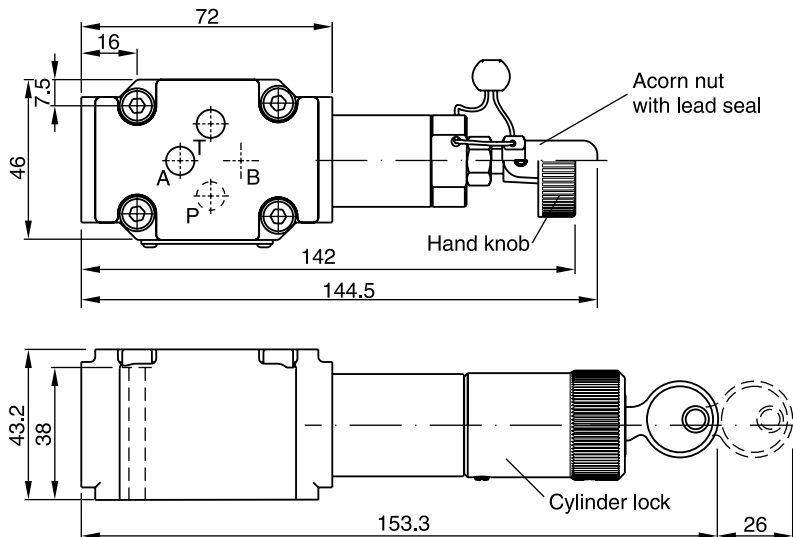
Code	Seal
<b>N</b>	<b>NBR</b>
V	FPM

Code	Adjustment
<b>S</b>	<b>Hand knob (standard)</b>
A	Acorn nut with lead seal
L	Cylinder lock

**Bold letters = Short-term availability**

8

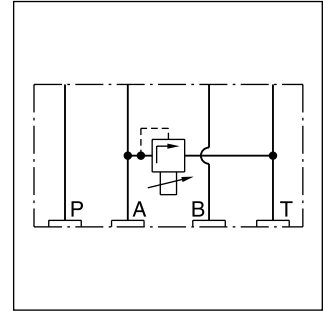
**Dimensions**



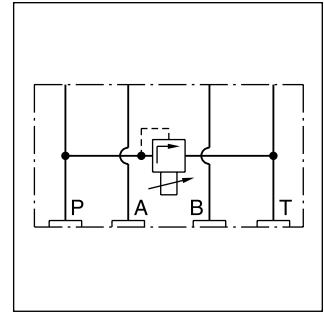
**Pilot Valves**

**Pilot valve with proportional relief function RPDM2\***, sandwich mounting NG06. MTTF<sub>D</sub> value 150 years, flow rate maximum 5 l/min.

\*For technical details see series RE06M\*W.

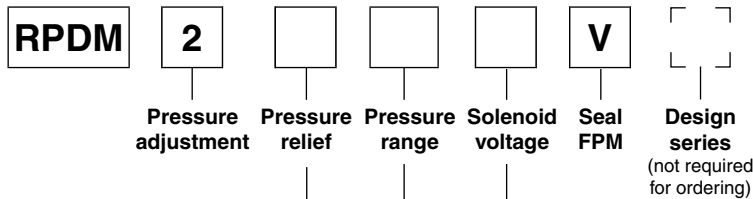


RPDM2AT



RPDM2PT

**Ordering code**



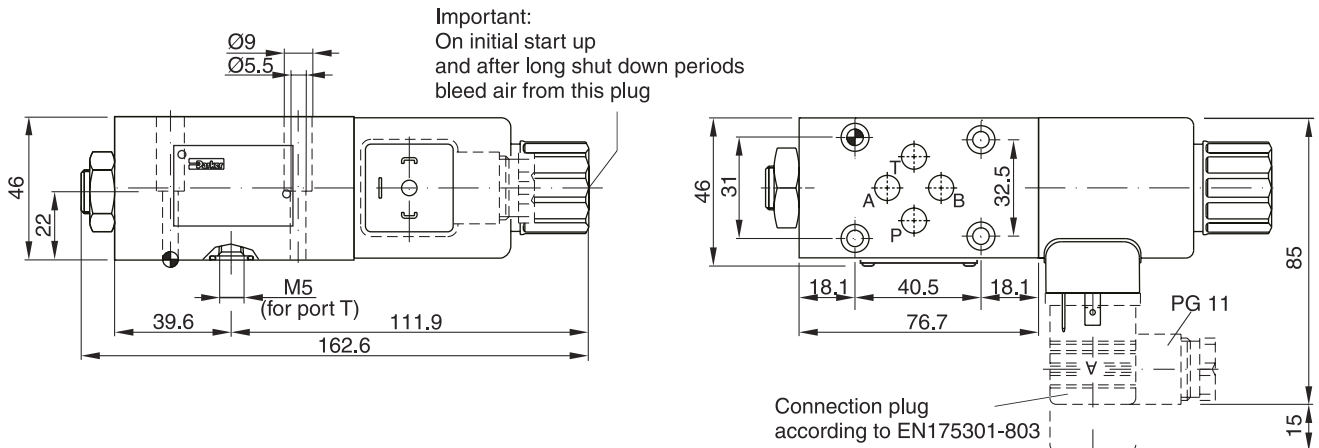
Code	Adjustment
AT	A to T
PT	P to T

Code	Solenoid voltage
<b>K</b>	<b>12 V, 2.3 A</b>
X	16 V, 1.3 A

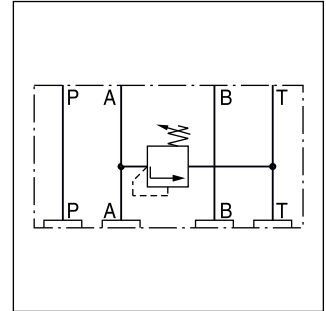
Code	Pressure range [bar]
10	105
17	175
25	250
35	350

**Bold letters = Short-term availability**

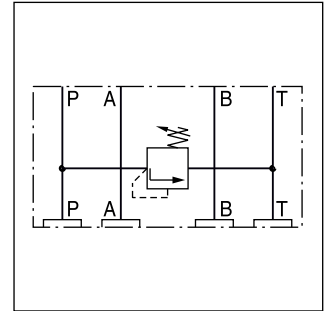
**Dimensions**



**Sandwich valve with pressure relief function ZUDB,** sandwich plate mounting NG06, see combination examples. MTTF<sub>D</sub> value 150 years, flow rate maximum 5 l/min.



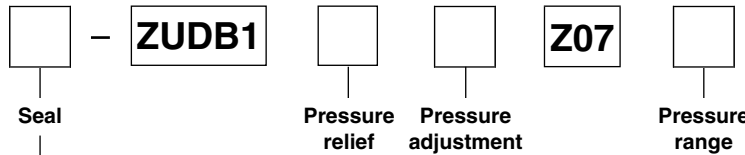
ZUDB1AT\*



ZUDB1PT\*

**Ordering code**

8



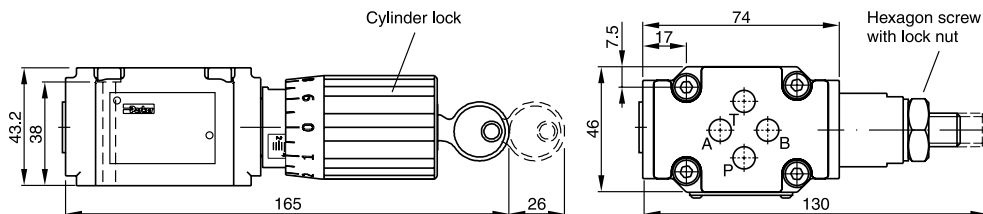
Code	Seal
omit	<b>NBR</b>
V	FPM

Code	Pressure relief
<b>AT</b>	<b>A to T</b>
<b>PT</b>	<b>P to T</b>

Code	Pressure range [bar]
<b>B</b>	<b>70</b>
<b>E</b>	<b>175</b>
<b>G</b>	<b>250</b>
<b>K</b>	<b>350</b>

Code	Adjustment
<b>2</b>	<b>Hexagon screw with lock nut</b>
61	Cylinder lock

**Bold letters =  
 Short-term availability**



**Pilot valve with preload function DSB\*P\***, subplate mounting NG06, see combination examples.  
MTTF<sub>D</sub> value 150 years, flow rate maximum 5 l/min.

□ - **DSBA100** □ **P07** □

Seal

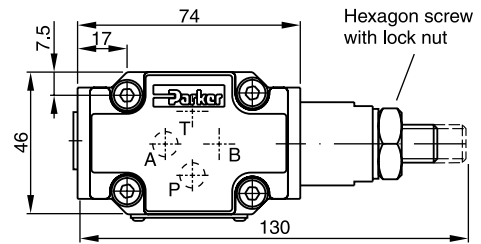
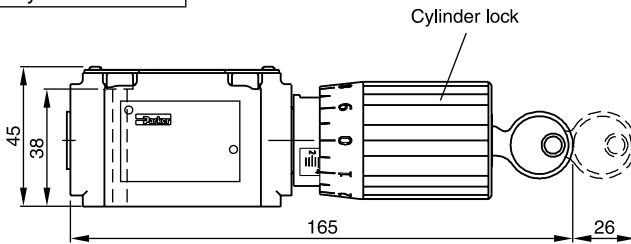
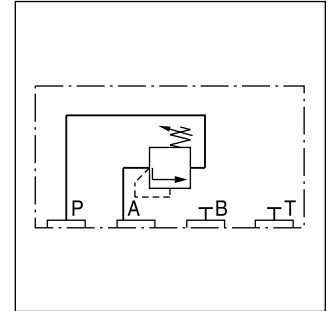
Pressure adjustment

Pressure range

Code	Seal
<b>omit</b>	<b>NBR</b>
V	FPM

Code	Pressure range [bar]
<b>B</b>	<b>70</b>
<b>E</b>	<b>175</b>
<b>G</b>	<b>250</b>
<b>K</b>	<b>350</b>

Code	Adjustment
<b>2</b>	<b>Hexagon screw with lock nut</b>
61	Cylinder lock



**Pilot valve with preload function DSB\*Z\***, sandwich plate mounting NG06, see combination examples.  
MTTF<sub>D</sub> value 150 years, flow rate maximum 5 l/min.

□ - **DSBA100** □ **Z07** □

Seal

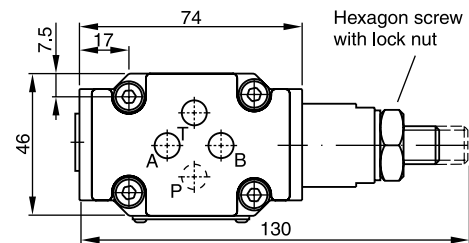
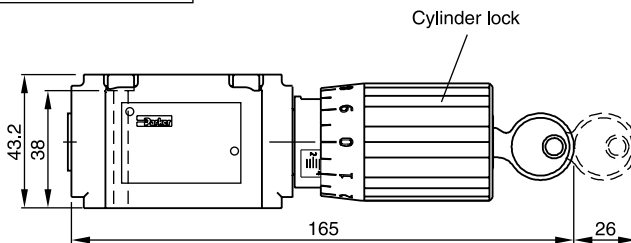
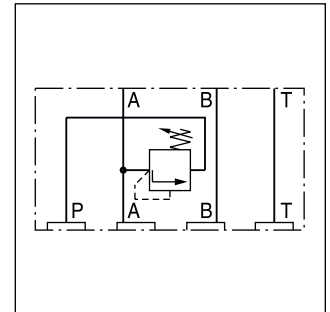
Pressure adjustment

Pressure range

Code	Seal
<b>omit</b>	<b>NBR</b>
V	FPM

Code	Pressure range [bar]
<b>B</b>	<b>70</b>
<b>E</b>	<b>175</b>
<b>G</b>	<b>250</b>
<b>K</b>	<b>350</b>

Code	Adjustment
<b>2</b>	<b>Hexagon screw with lock nut</b>
61	Cylinder lock



**Bold letters =**  
Short-term availability

**Pilot valve with unloading function UR06M**, subplate mounting NG06, see combination examples. MTTF<sub>D</sub> value 150 years, flow rate maximum 5 l/min.

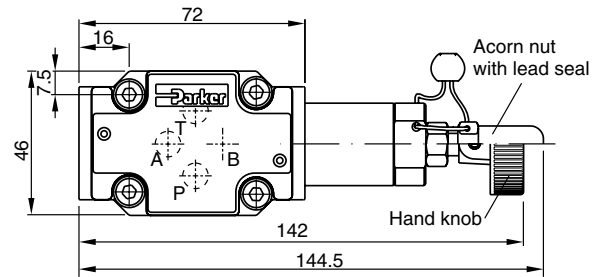
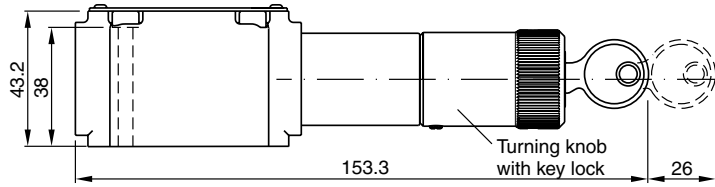
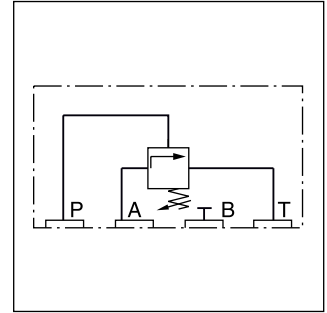
**UR** **06** **M**   **4**

Pressure Adjustment range      Pilot oil drain internal      Seal

Code	Pressure range [bar]
07	70
17	175
25	250
35	350

Code	Seal
N	NBR
V	FPM

Code	Adjustment
S	Hand knob (standard)
A	Acorn nut with lead seal
L	Cylinder lock



**8**

**Pilot valve with unloading function US06M**, sandwich plate NG06, see combination examples. MTTF<sub>D</sub> value 150 years, flow rate maximum 5 l/min.

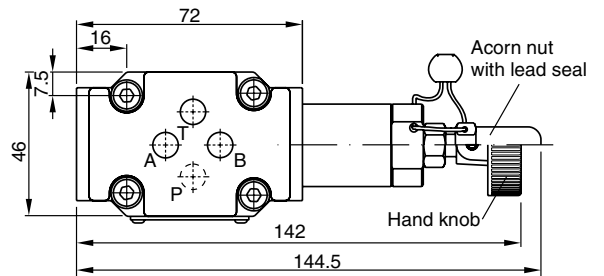
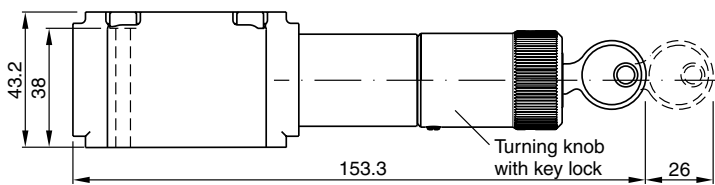
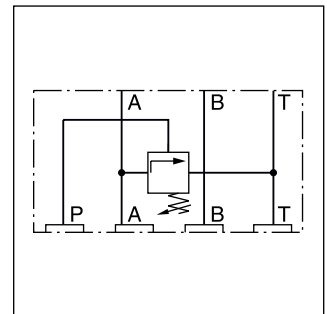
**US** **06** **M**   **4**

Pressure Adjustment range      Pilot oil drain internal      Seal

Code	Pressure range [bar]
07	70
17	175
25	250
35	350

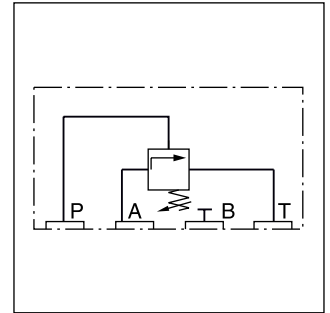
Code	Seal
N	NBR
V	FPM

Code	Adjustment
S	Hand knob (standard)
A	Acorn nut with lead seal
L	Cylinder lock

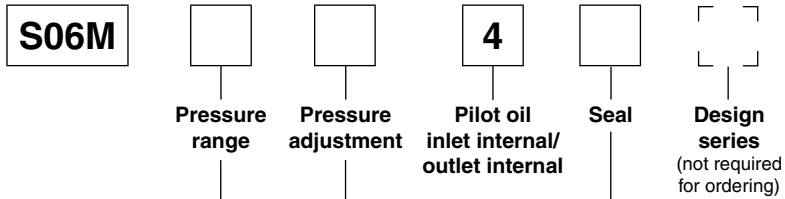


**Pilot Valves**

**Pilot valve for pressure sequence function S06M**, subplate mounting NG06, see combination examples. MTTF<sub>D</sub> value 150 years, flow rate maximum 5 l/min.



**Ordering code**



Code	Pressure range [bar]
<b>07</b>	<b>70</b>
<b>17</b>	<b>175</b>
<b>25</b>	<b>250</b>
<b>35</b>	<b>350</b>

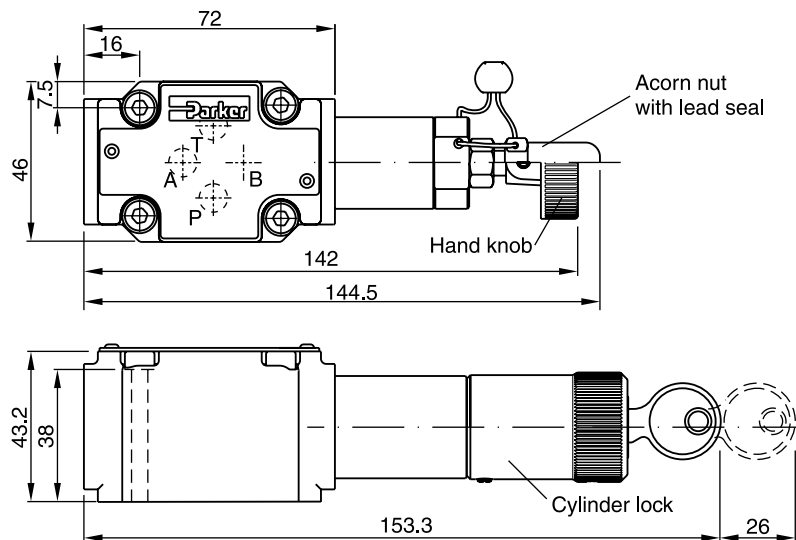
Code	Seal
<b>N</b>	<b>NBR</b>
V	FPM

Code	Adjustment
<b>S</b>	<b>Hand knob (standard)</b>
A	Acorn nut with lead seal
L	Cylinder lock

**Bold letters = Short-term availability**

**8**

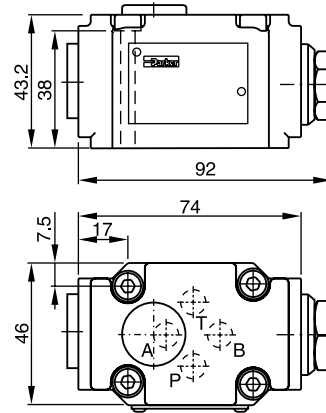
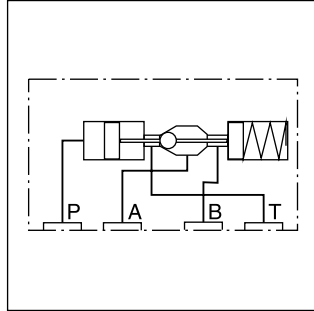
**Dimensions**



**Check valve, hydraulically pilot operated NG06**  
 with pilot control, for subplate mounting.  
 MTTF<sub>D</sub> value 75 years, flow rate maximum 5 l/min.

**Ordering code**

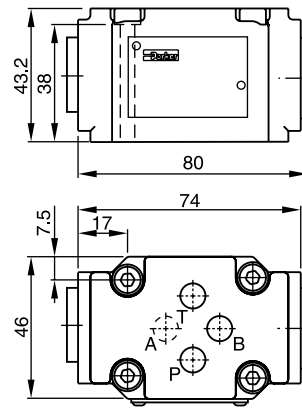
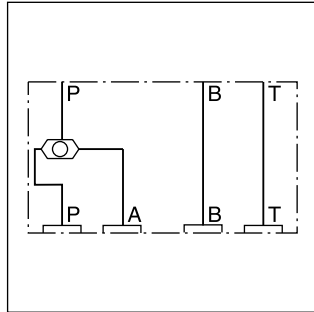
**SVLA1006P07**



**Shuttle valve - sandwich plate mounting NG06**  
 MTTF<sub>D</sub> value 150 years, flow rate maximum 5 l/min.

**Ordering code**

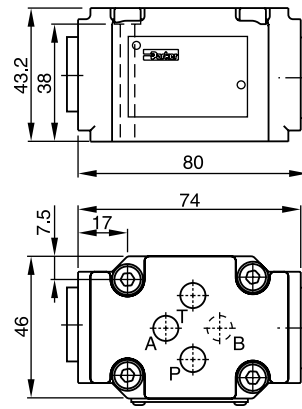
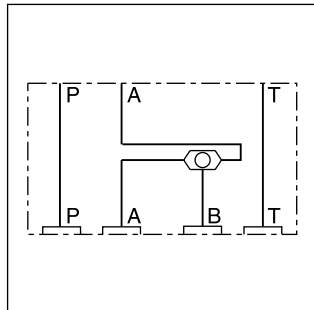
**ZSRA1PP0Z07**



**Shuttle valve - sandwich plate mounting NG06**  
 MTTF<sub>D</sub> value 150 years, flow rate maximum 5 l/min.

**Ordering code**

**ZSRB1AA0Z07**



8



Symbol	Type	Size	Hight
	<b>PADA 1007-AA-BB</b>	NG10-NG06	25
	<b>PADA 1007/A-B/B-A</b>	NG10-NG06	25
	H06-1044	NG06	30
	<b>H06-1039</b>	NG06	30
	<b>H06-504</b>	NG06	30
	<b>H06-711</b>	NG06	30
	H06-1274	NG06	30
	<b>H06-1040</b>	NG06	30

Attention:  
Details for cover-, sandwich- and adaptor plates see chapter 12.

**Bold letters =  
Short-term availability**

access08.INDD CM 16.04.15

**Cover-, Sandwich-, Adaptor Plates**

Symbol	Type	Size	Hight
	<b>H06DO-1291</b>	NG06	10
	<b>H06DU-814</b>	NG06	71.3
<p>All ports can be equipped with orifices or plugs (1/16NPT)</p>	<b>CS06040N</b>	NG06	40.3
<p>All ports can be equipped with orifices or plugs (1/16NPT)</p>	<b>CS06082N</b>	NG06	40.3
<p>All ports can be equipped with orifices or plugs (1/16NPT)</p>	<b>CS06080N</b>	NG06	40.3
	<b>D51DC071D</b>	NG06	26.3
	<b>D51VP071C</b> <b>D51VP101D</b>	NG06 NG10	26.3 26.9

Attention:  
Details for cover-, sandwich- and adaptor plates see chapter 12.

**Bold letters =**  
Short-term availability

8